



US00D903293S

(12) **United States Design Patent** (10) **Patent No.:** **US D903,293 S**  
**Fangueiro et al.** (45) **Date of Patent:** **\*\* Dec. 1, 2020**

(54) **ANTI-SLIP SOLE FOR A SOCK**  
(71) Applicant: **GRIFFITHS & NIELSEN LIMITED**,  
Horsham (GB)  
(72) Inventors: **Raúl Fangueiro**, Braga (PT); **Juliana Cruz**, Vila Nova de Famalicão (PT); **Ana Leitão**, Maia (PT); **Tiago Sousa**, Vila Real (PT); **Rute Franco**, Braga (PT)  
(73) Assignee: **GRIFFITHS & NIELSEN LIMITED**,  
West Sussex (GB)

(\*\*) Term: **15 Years**

(21) Appl. No.: **29/673,537**

(22) Filed: **Dec. 14, 2018**

(30) **Foreign Application Priority Data**

Jul. 2, 2018 (EM) ..... 005346004-0001

(51) **LOC (12) Cl.** ..... **02-04**

(52) **U.S. Cl.**

USPC ..... **D2/980**

(58) **Field of Classification Search**

USPC ..... D24/189, 192; D2/919, 947, 951, 954, D2/956, 958, 980-994

CPC ..... A41D 13/065; A41D 13/08; A61F 13/061; A61F 13/08; A63B 2071/125; Y10S 602/901; C08L 2666/04; C09J 123/02; A41B 11/004; A41B 11/008; A43B 13/223; A43B 13/141; A43B 3/163; A43B 5/08; D04B 1/26; D04B 1/265

See application file for complete search history.

(56) **References Cited**

U.S. PATENT DOCUMENTS

4,651,354 A *	3/1987	Petrey .....	A41B 11/004 2/239
D305,384 S *	1/1990	Hubbard .....	D2/919
D746,567 S *	1/2016	Young .....	D2/951
D783,969 S *	4/2017	Kanata .....	D2/951
D794,317 S *	8/2017	Stewart .....	D2/954
D817,619 S *	5/2018	Bressanin .....	D2/958
D846,253 S *	4/2019	Durflinger .....	D2/958
D847,479 S *	5/2019	Ford .....	D2/958
2008/0216362 A1 *	9/2008	Gerber .....	A43B 13/141 36/67 A
2009/0241369 A1 *	10/2009	Votolato .....	A43B 13/223 36/7.3

\* cited by examiner

*Primary Examiner* — Jennifer L Watkins  
(74) *Attorney, Agent, or Firm* — Donald E. Stout; Stout, Uxa & Buyan, LLP

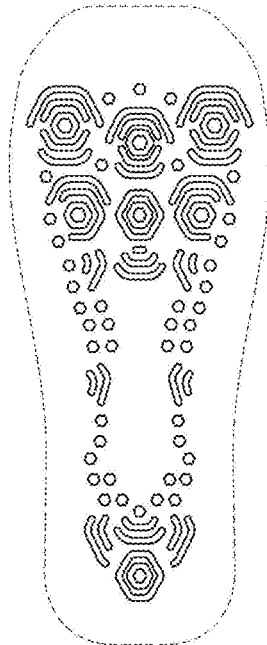
(57) **CLAIM**

The ornamental design for an anti-slip sole for a sock, as shown and described.

**DESCRIPTION**

FIG. 1 is a bottom plan view of an anti-slip sole for a sock showing our new invention;  
FIG. 2 is a top plan view thereof;  
FIG. 3 is a side elevation view thereof;  
FIG. 4 is an opposite side elevation view thereof;  
FIG. 5 is a front elevation view thereof;  
FIG. 6 is a rear elevation view thereof; and,  
FIG. 7 is a bottom isometric view thereof.  
The broken lines in the figures are for the purpose of depicting environment and form no part of the claim.

**1 Claim, 7 Drawing Sheets**



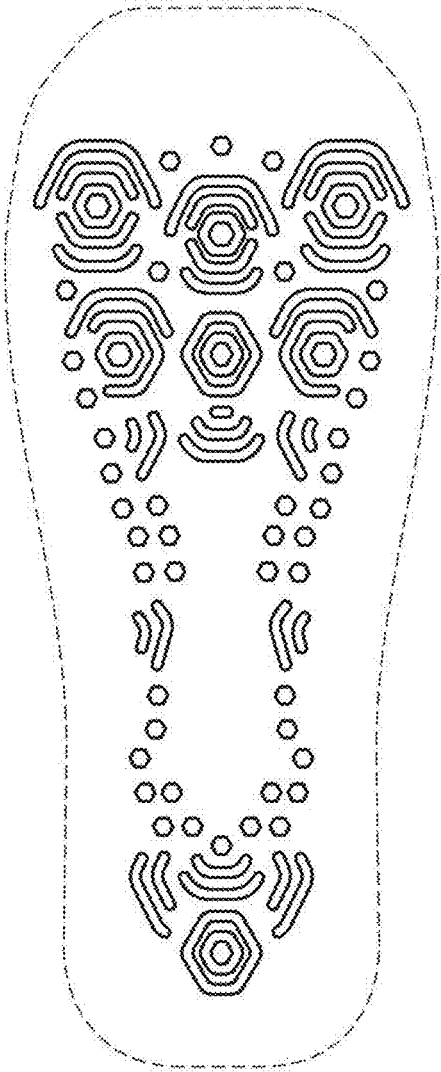


FIG. 1

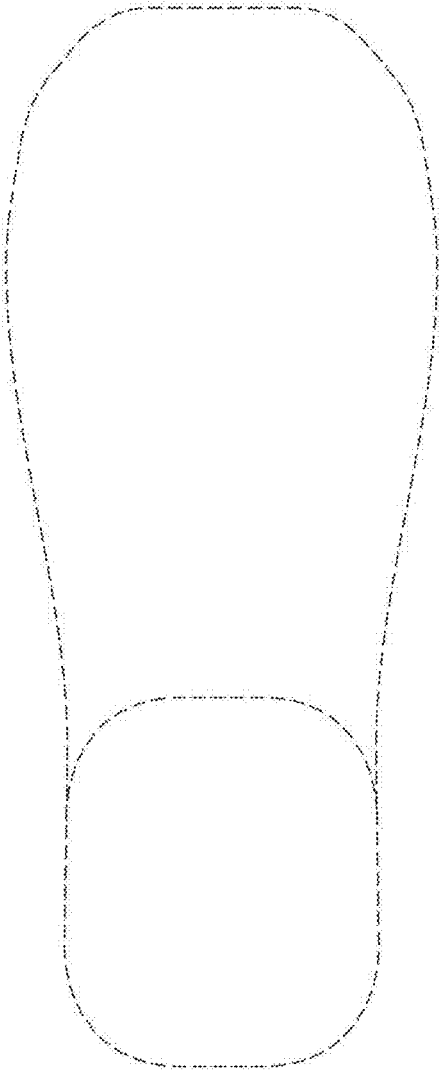


FIG. 2

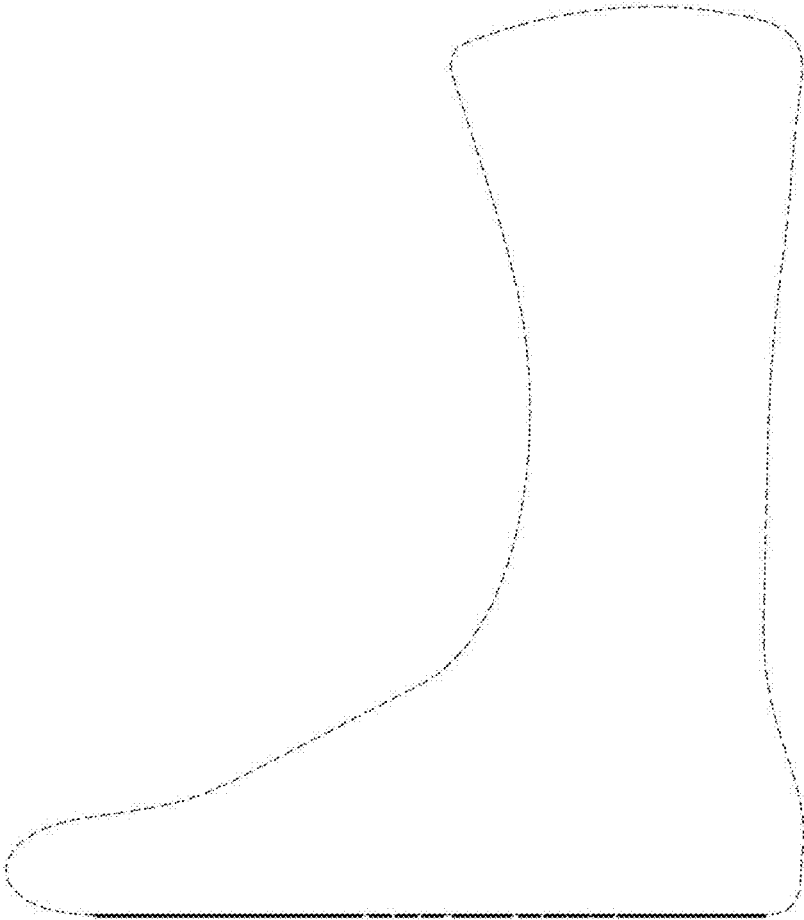


FIG. 3

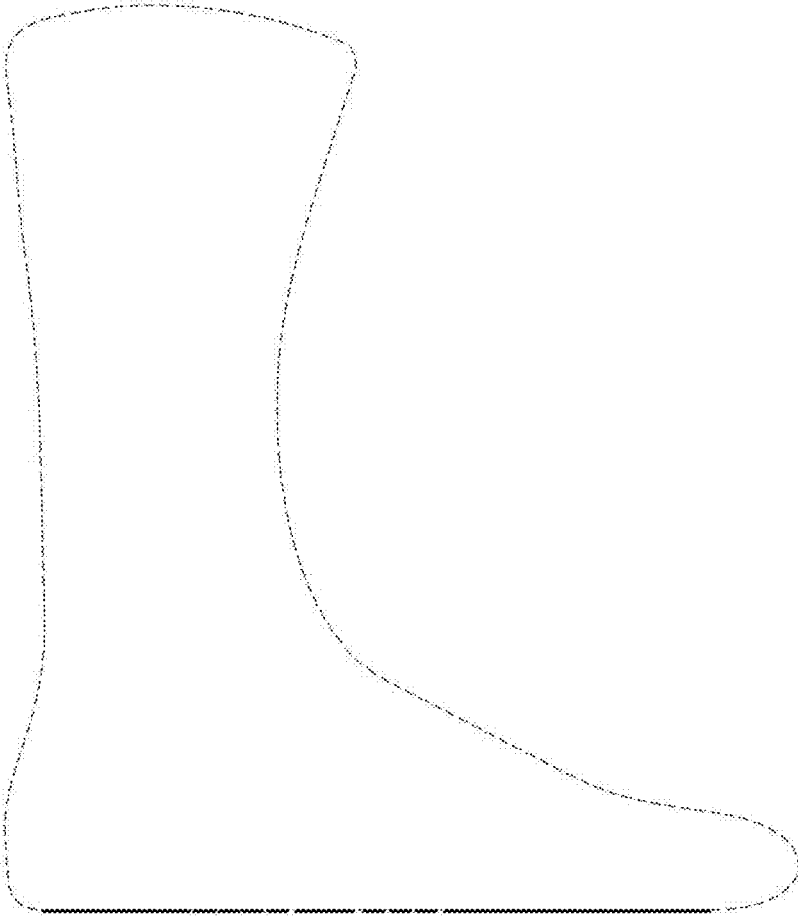


FIG. 4

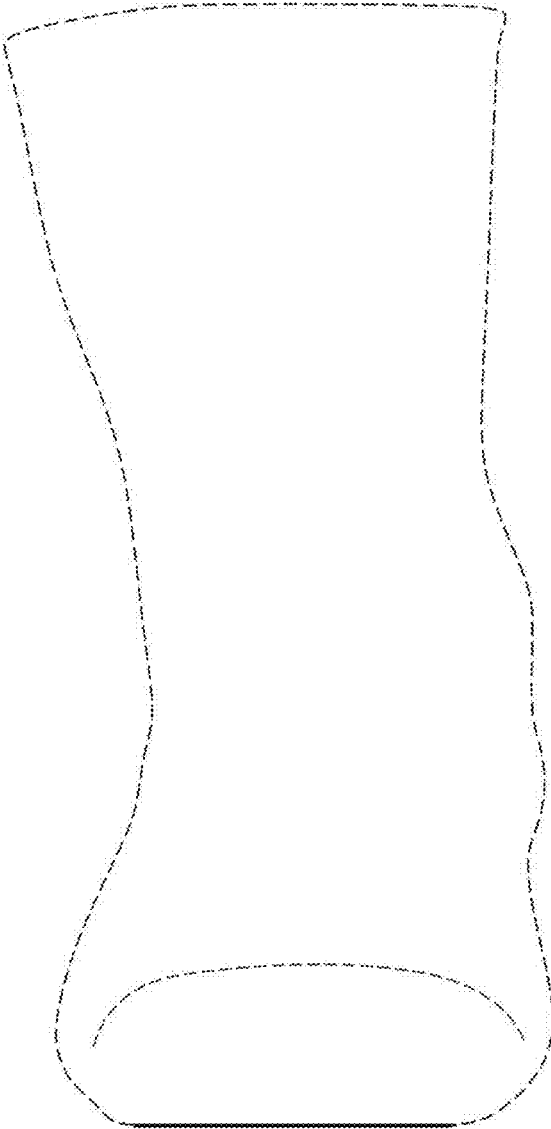


FIG. 5

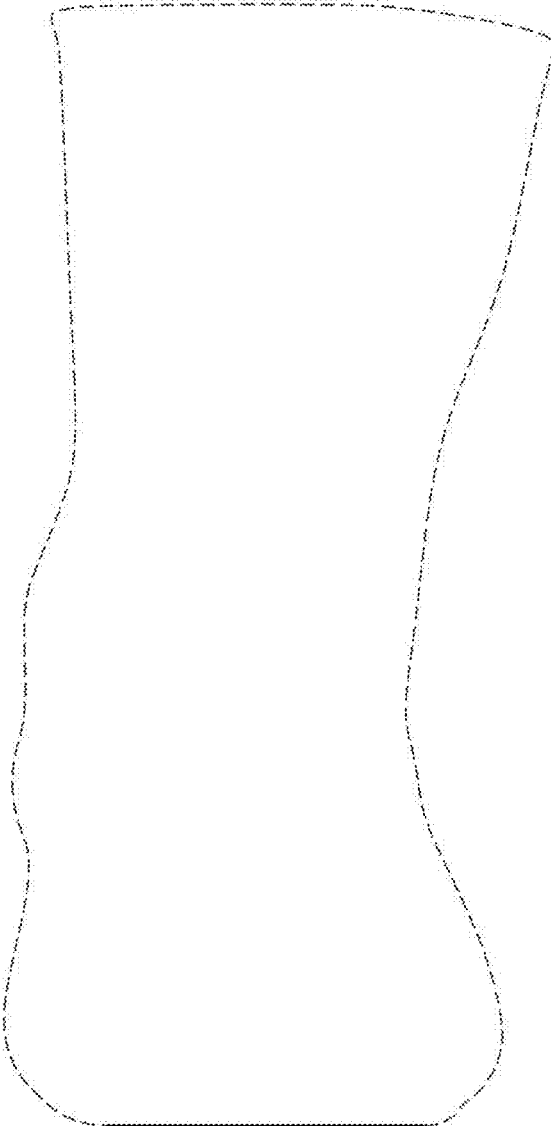


FIG. 6

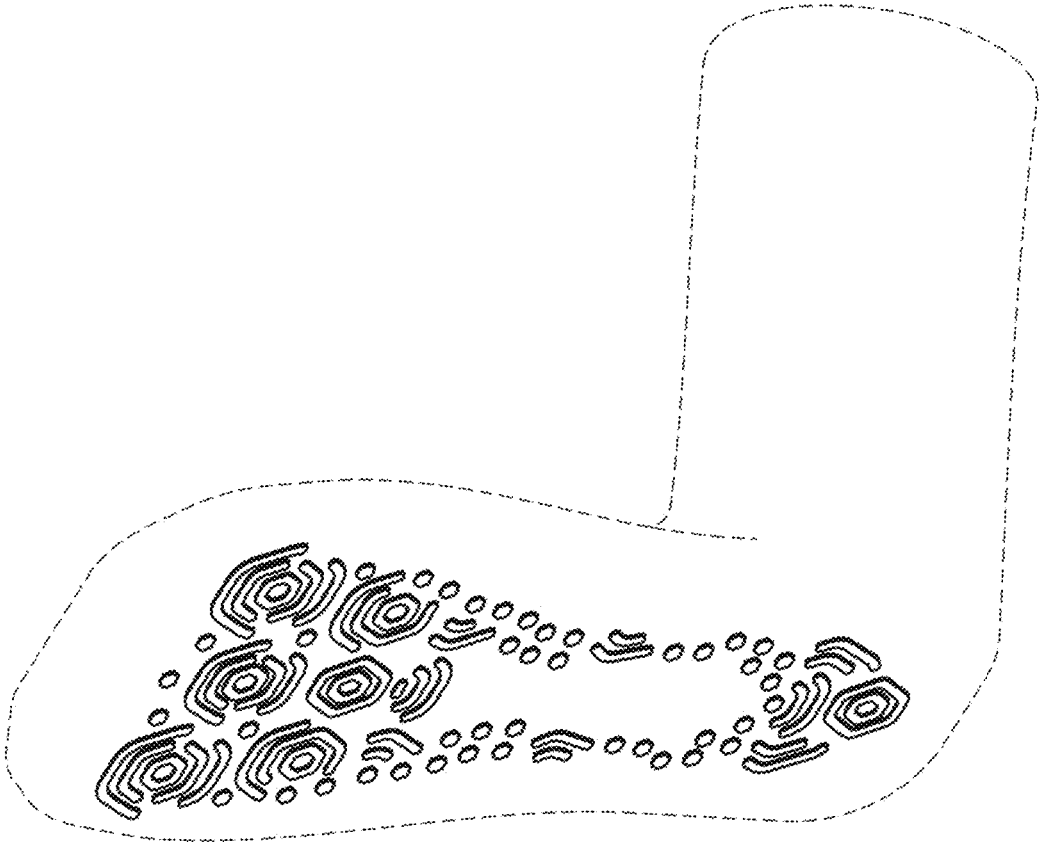


FIG. 7