



**Volume II**

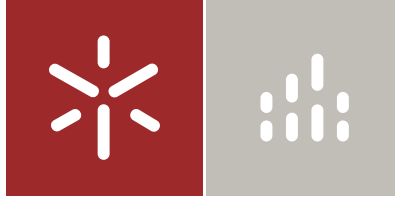
Adaptabilidade do construído: Reversão  
da antiga Adega Cooperativa de Braga em  
coabitação

Hélio Ribeiro Peixoto

Universidade do Minho  
Escola de Arquitectura







Universidade do Minho  
Escola de Arquitectura

Hélio Ribeiro Peixoto

Adaptabilidade do construído: Reconversão  
da antiga Adega Cooperativa de Braga em  
coabitação

Volume II

Dissertação de Mestrado  
Ciclo de Estudos Integrados Conducentes ao  
Grau de Mestre em Arquitectura  
Área de Cultura Arquitetónica

Trabalho efetuado sob a orientação da  
Professora Doutora Ana Luísa Rodrigues

## Índice

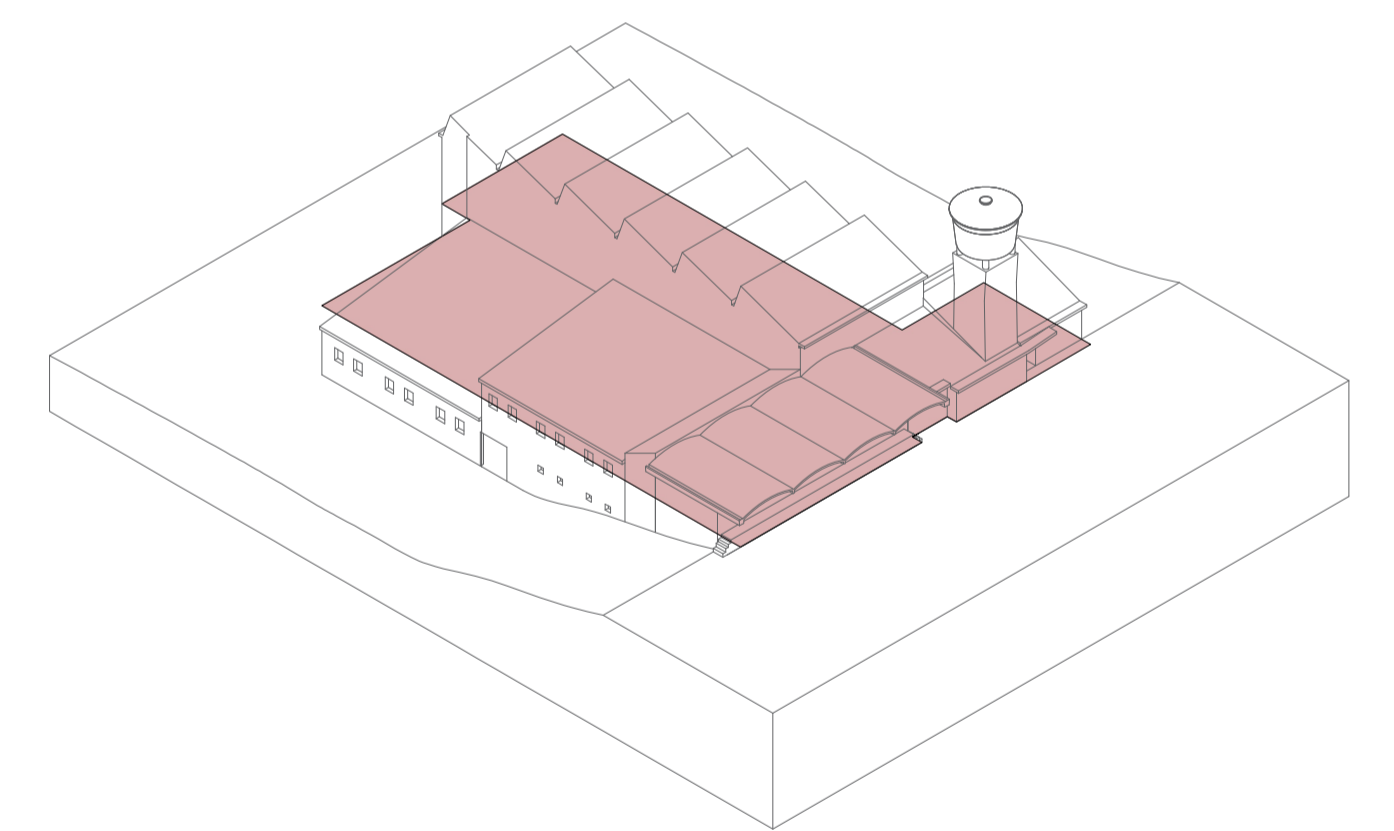
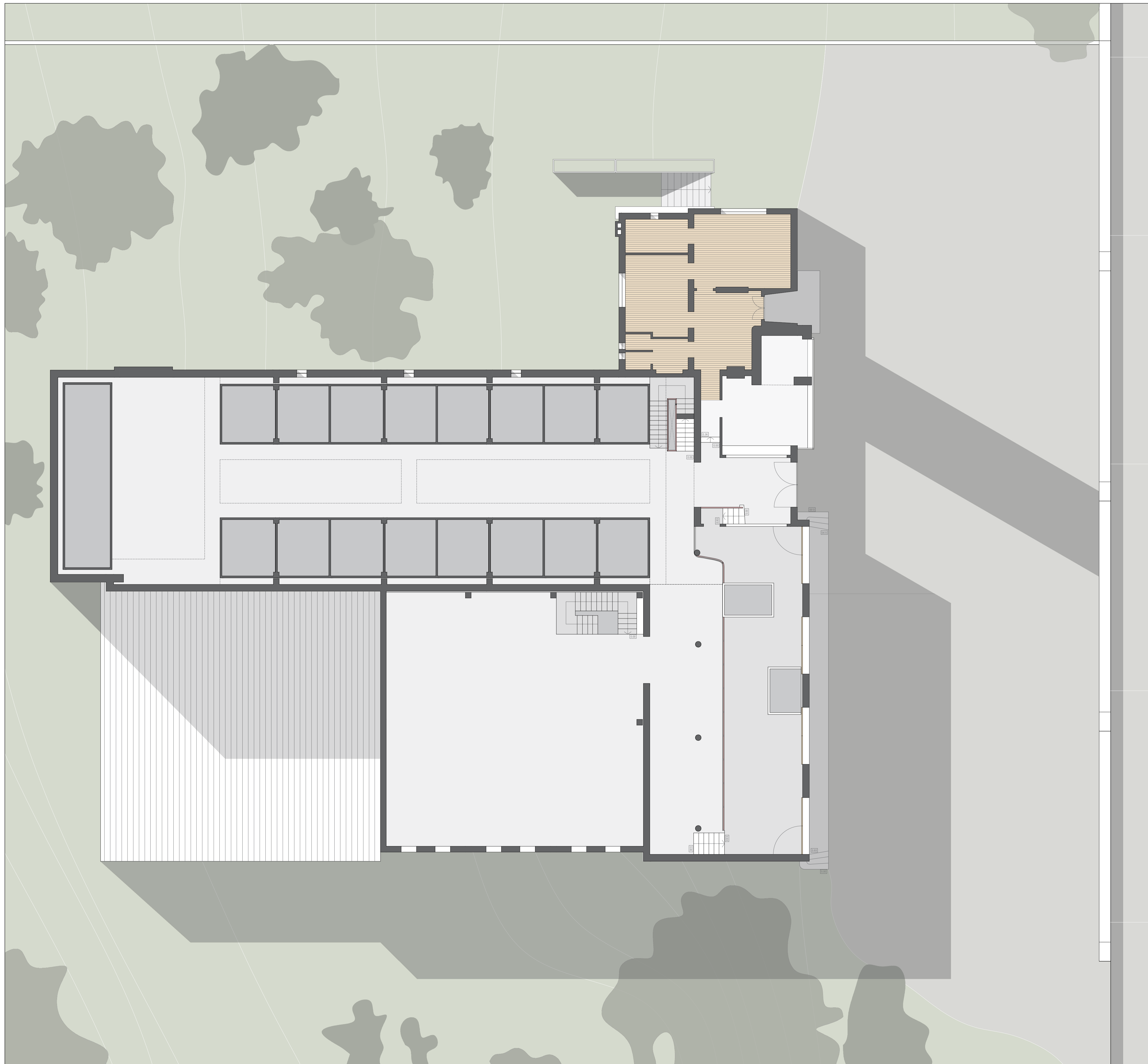
### **LEVANTAMENTO**

Planta Piso 0	1
Planta Piso -1	2
Alçados Oeste e Sul	3
Alçados Este e Norte	4

### **PROPOSTA**

Planta Piso 0	5
Planta Piso -1	6
Alçados Oeste e Sul	7
Alçados Este e Norte	8
Cortes AA'	9
Cortes BB' E CC'	10
Cortes DD' e EE'	11
Cortes FF' e GG'	12
Cortes HH' e II'	13
Cortes JJ' e KK'	14
Módulo de Habitação “cápsula”	15
Módulo Multifuncional	16



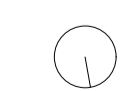


ISOMETRIA

MATERIAIS:

■ BETÃO ARMADO / GRANITO

■ MADEIRA

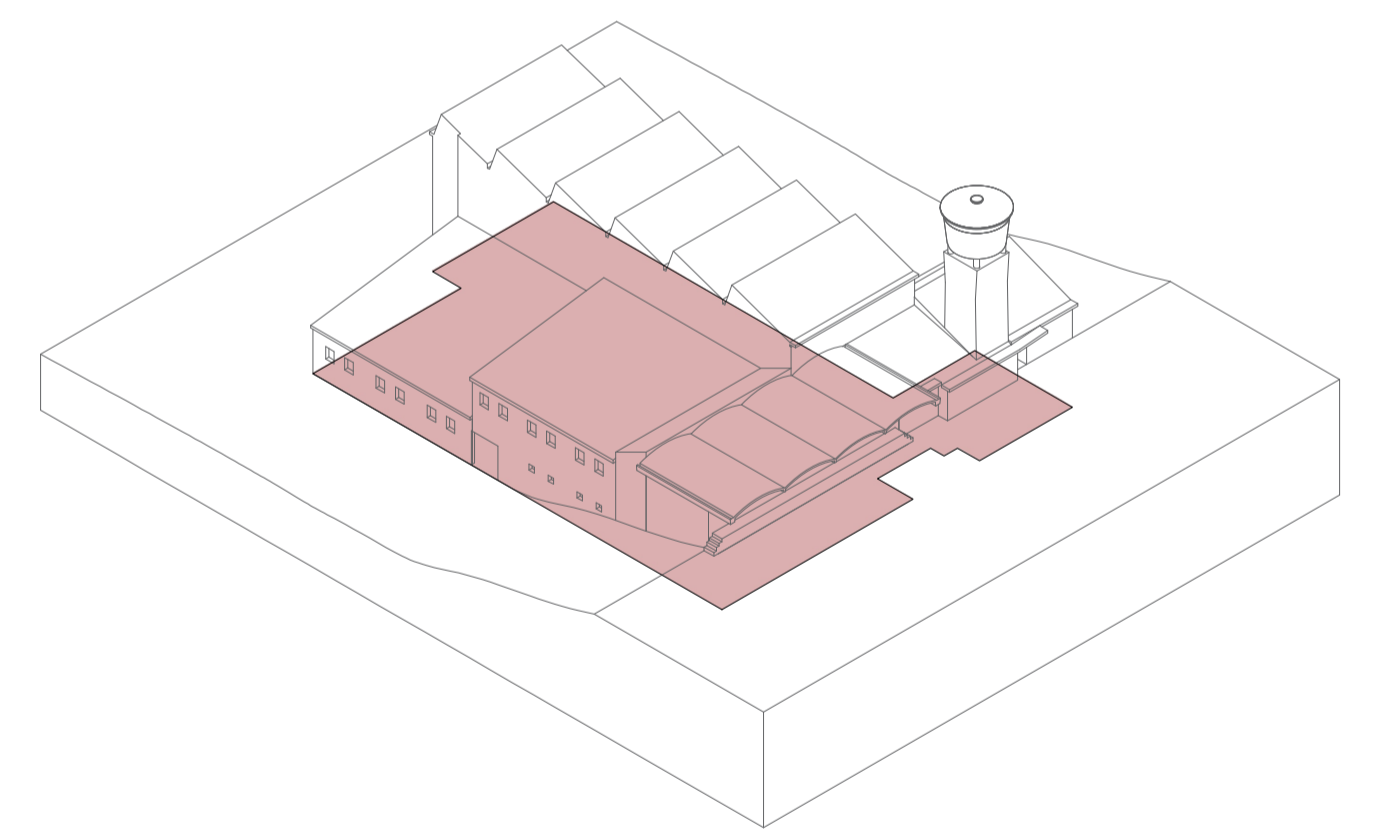
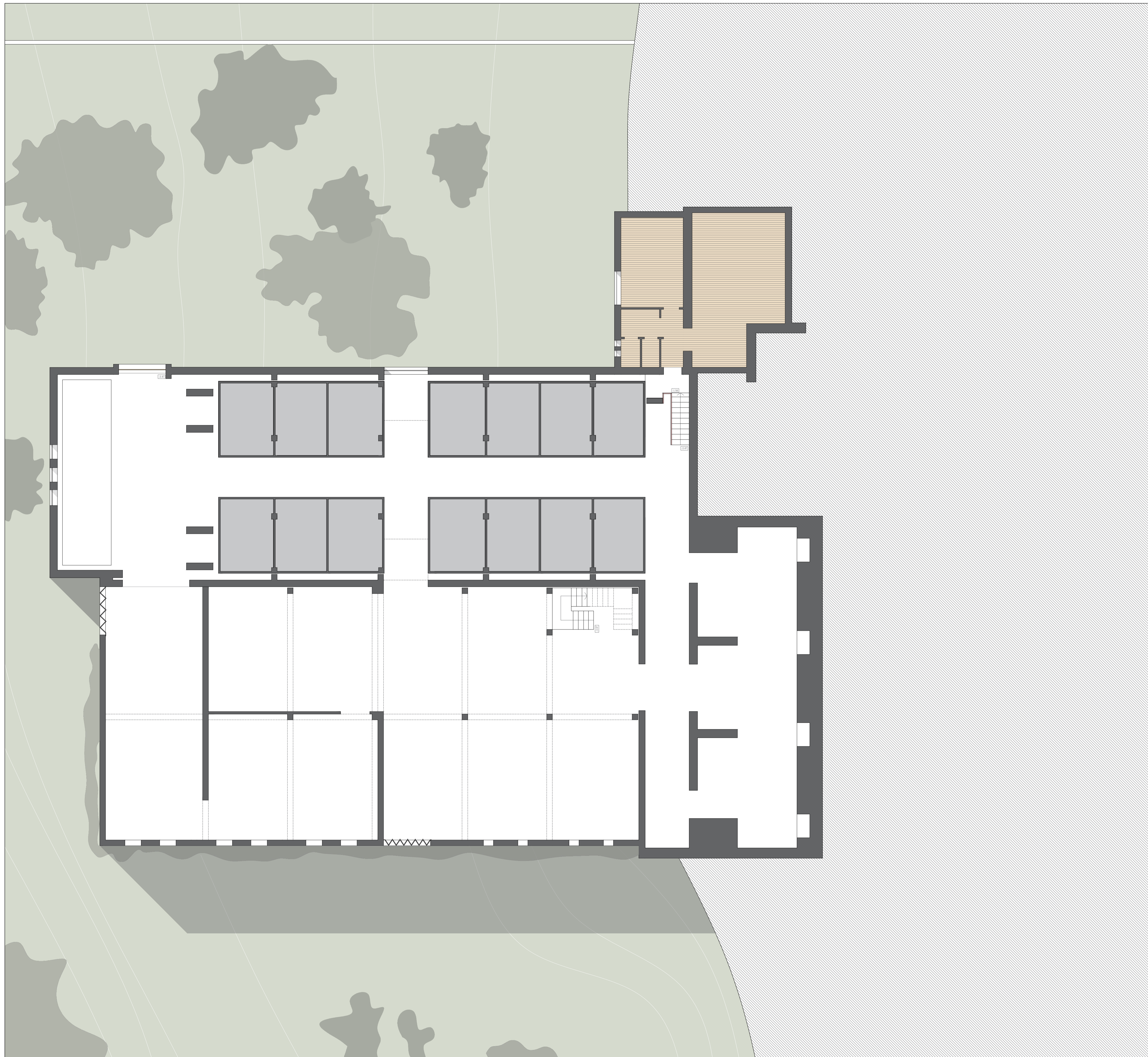


ADAPTABILIDADE DO CONSTRUÍDO: RECONVERSÃO DA ANTIGA ADEGA COOPERATIVA DE BRAGA EM COABITAÇÃO  
DISSERTAÇÃO DE MESTRADO - CICLO DE ESTUDOS INTEGRADOS CONDUCENTES AO GRAU DE MESTRE EM ARQUITECTURA

HÉLIO RIBEIRO PEIXOTO  
DESENHOS LEVANTAMENTO

PLANTA PISO 0

ESCALA 1:100 **1** / 16

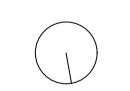


ISOMETRIA

MATERIAIS:

BETÃO ARMADO / GRANITO

MADERA



ADAPTABILIDADE DO CONSTRUIDO: RECONVERSÃO DA ANTIGA ADEGA COOPERATIVA DE BRAGA EM COABITAÇÃO

DISSERTAÇÃO DE MESTRADO - CICLO DE ESTUDOS INTEGRADOS CONDUCENTES AO GRAU DE MESTRE EM ARQUITECTURA

HÉLIO RIBEIRO PEIXOTO

DESENHOS LEVANTAMENTO

PLANTA PISO -1

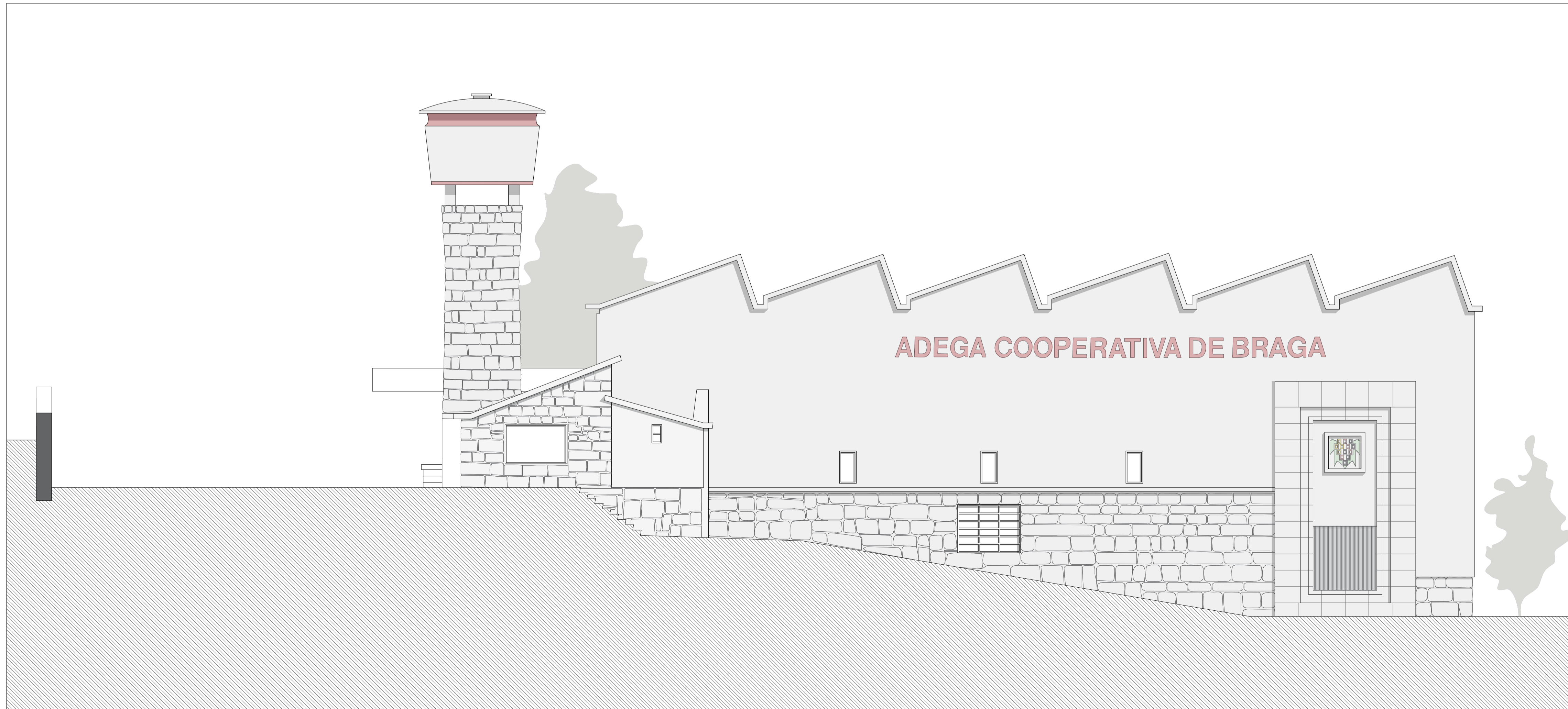
ESCALA 1:100

2/16

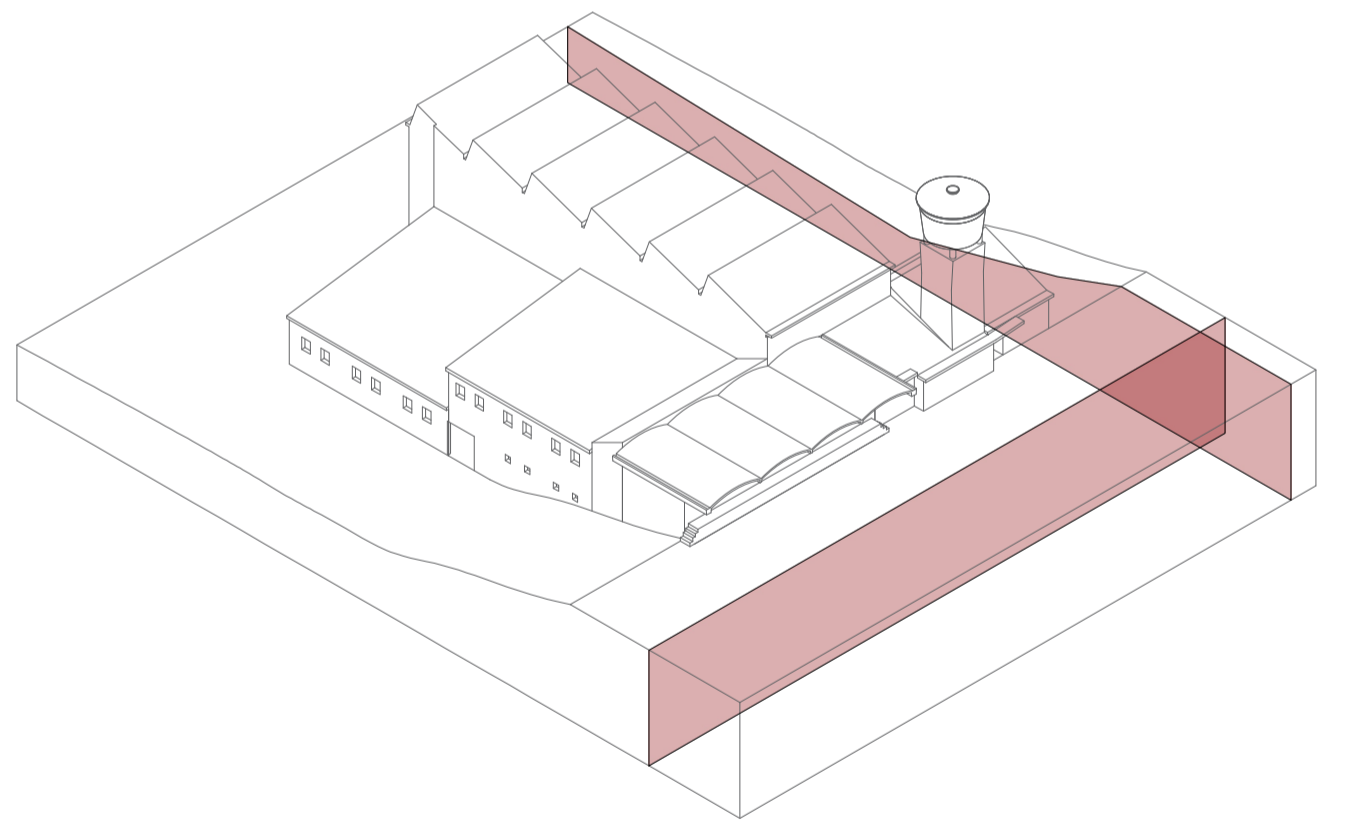




ALCADO OESTE

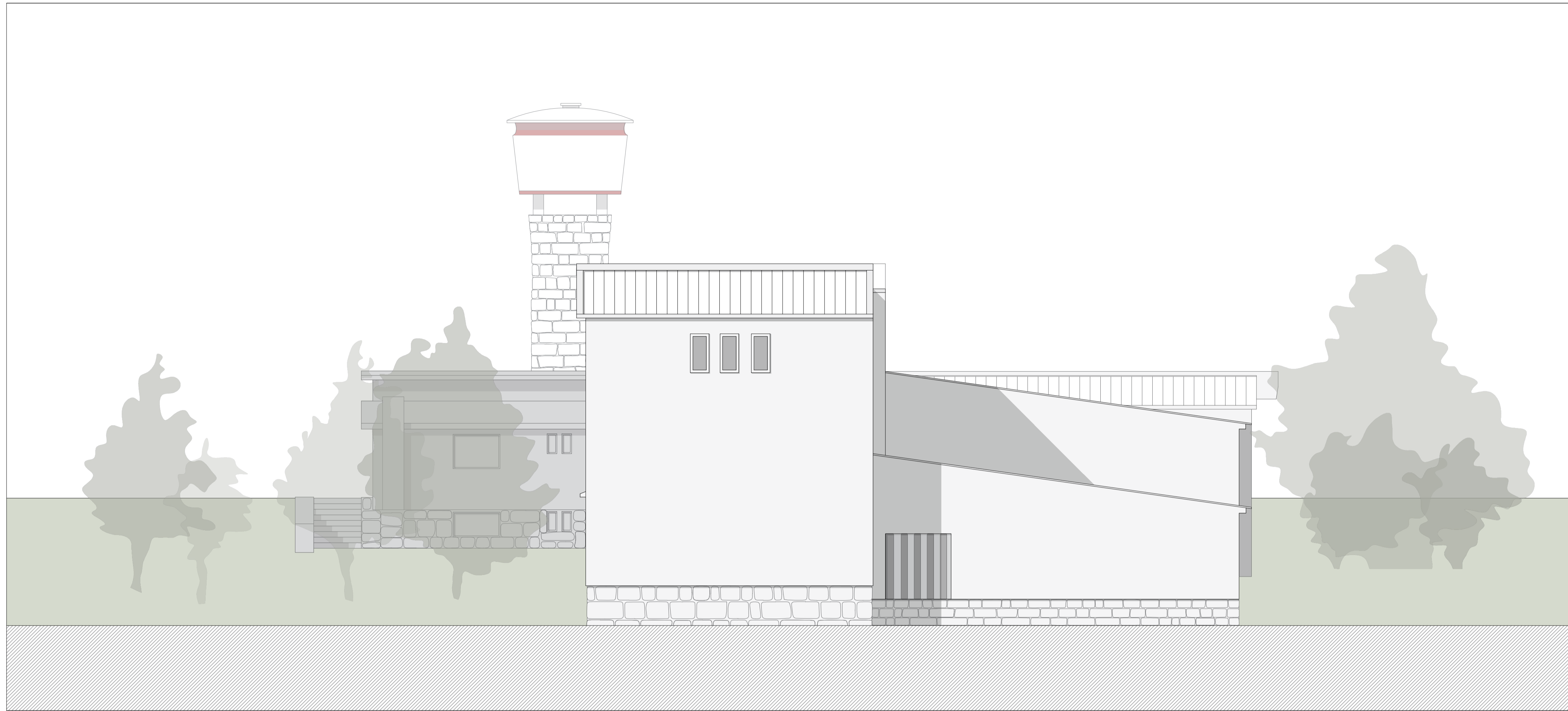


ALCADO SUL



ISOMETRIA

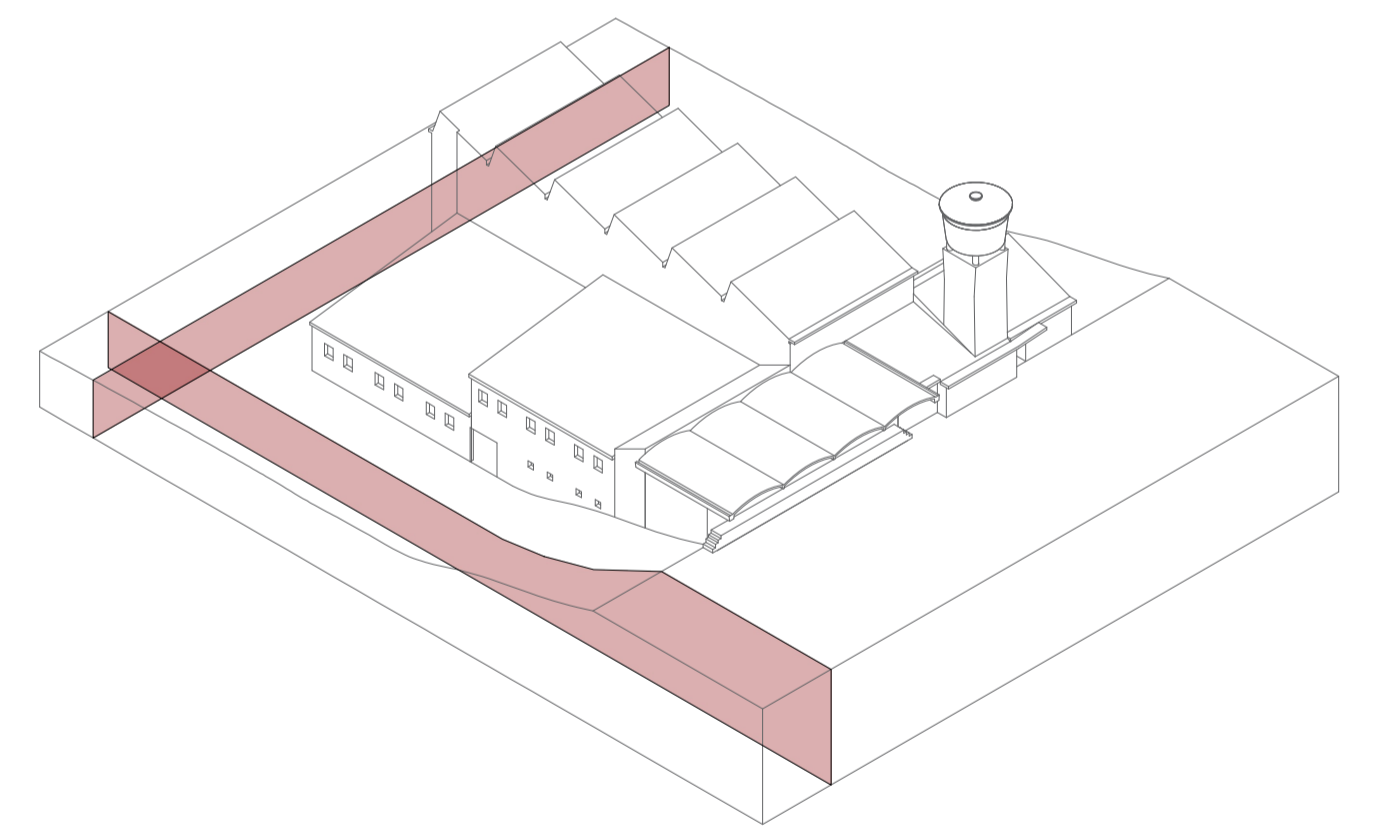
- MATERIAIS:
- BETÃO ARMADO / GRANITO
  - MADEIRA



ALCADO ESTE



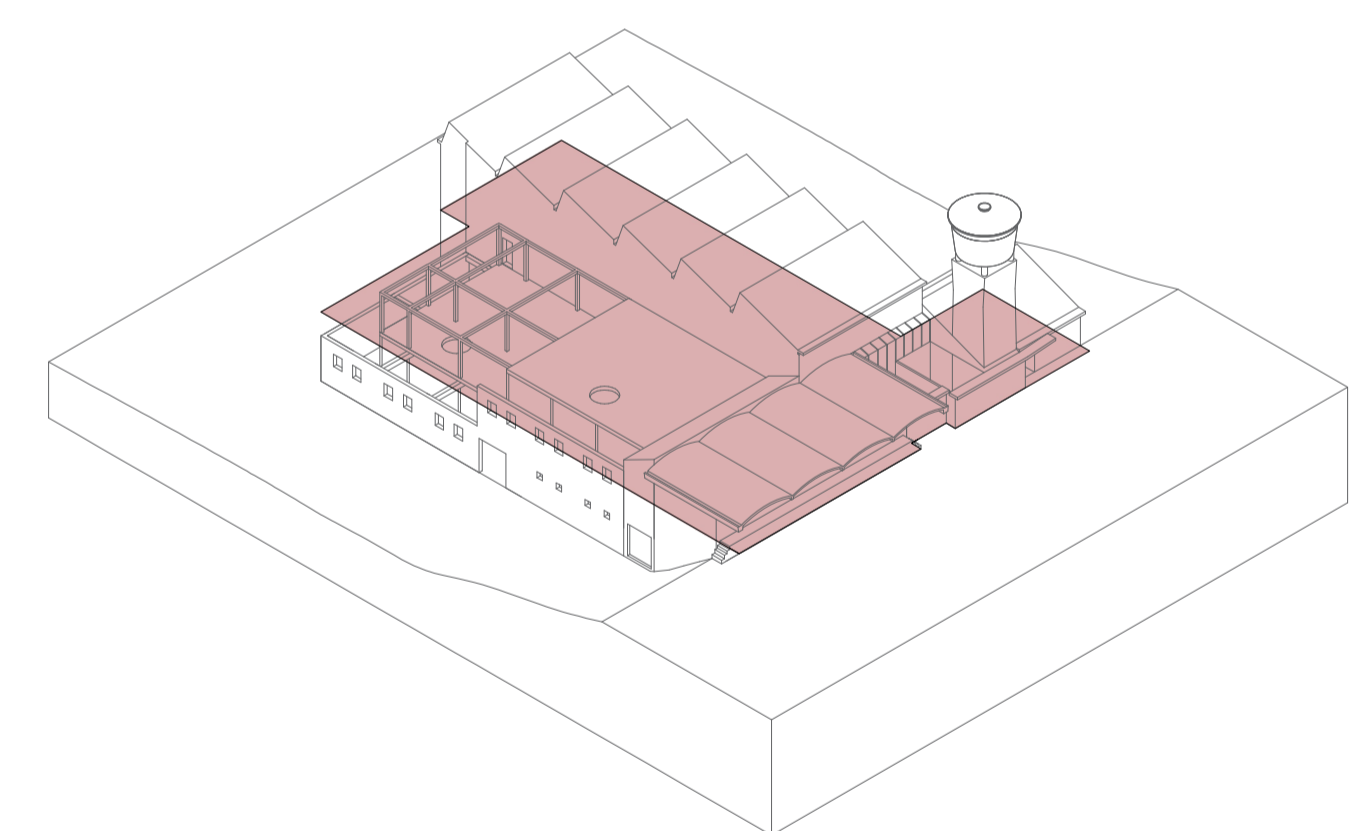
ALCADO NORTE



ISOMETRIA

- MATERIAIS:
- BETÃO ARMADO / GRANITO
  - MADEIRA





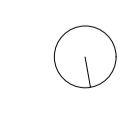
ISOMETRIA

LEGENDA:

1. ENTRADA PRINCIPAL
2. MÓDULO DE HABITAÇÃO
3. ZONA EXTERIOR
4. VÓCUIO ACESSO VERTICAL
5. ESPAÇO DE COMÉRCIO
6. PÁTIO

MATERIAIS:

- BETÃO ARMADO / GRANITO
- MADEIRA



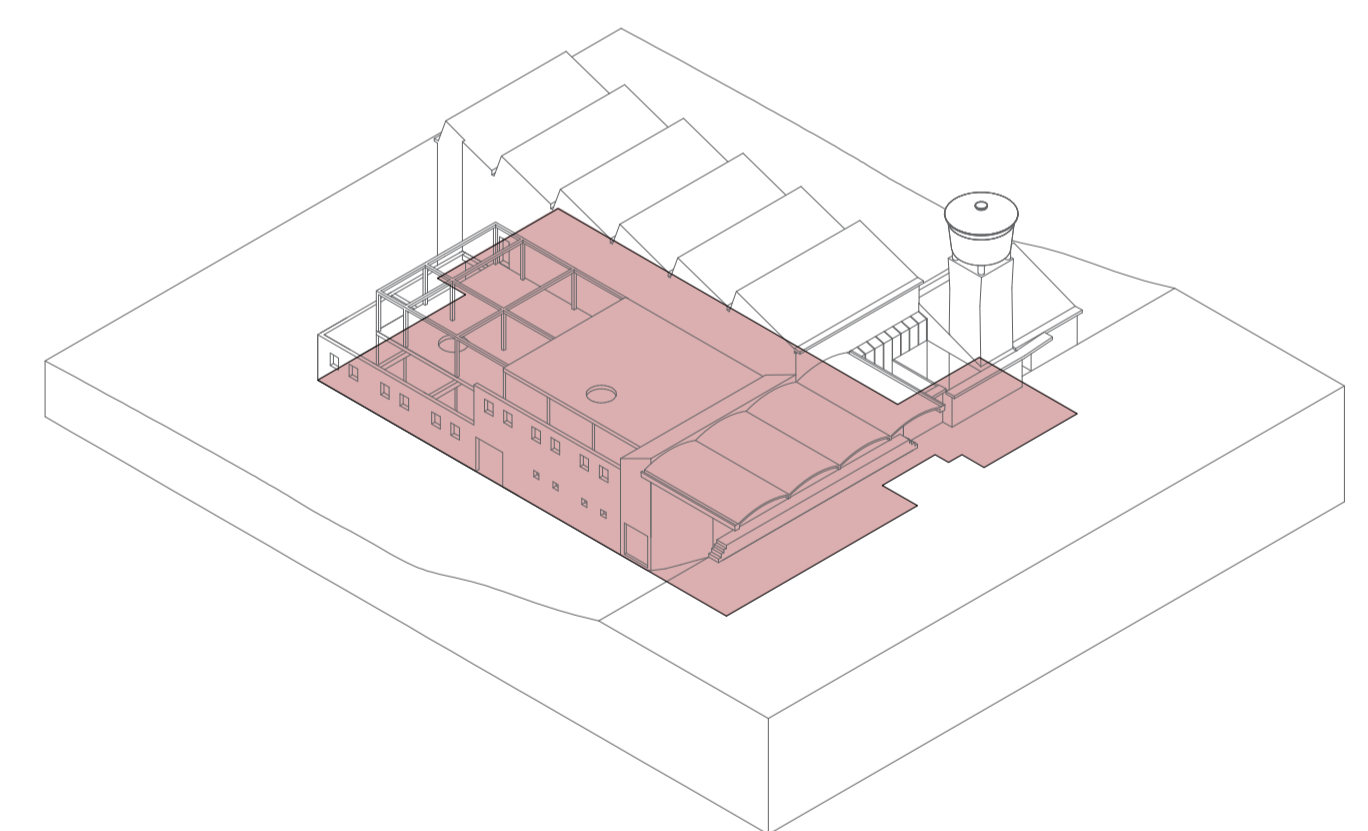
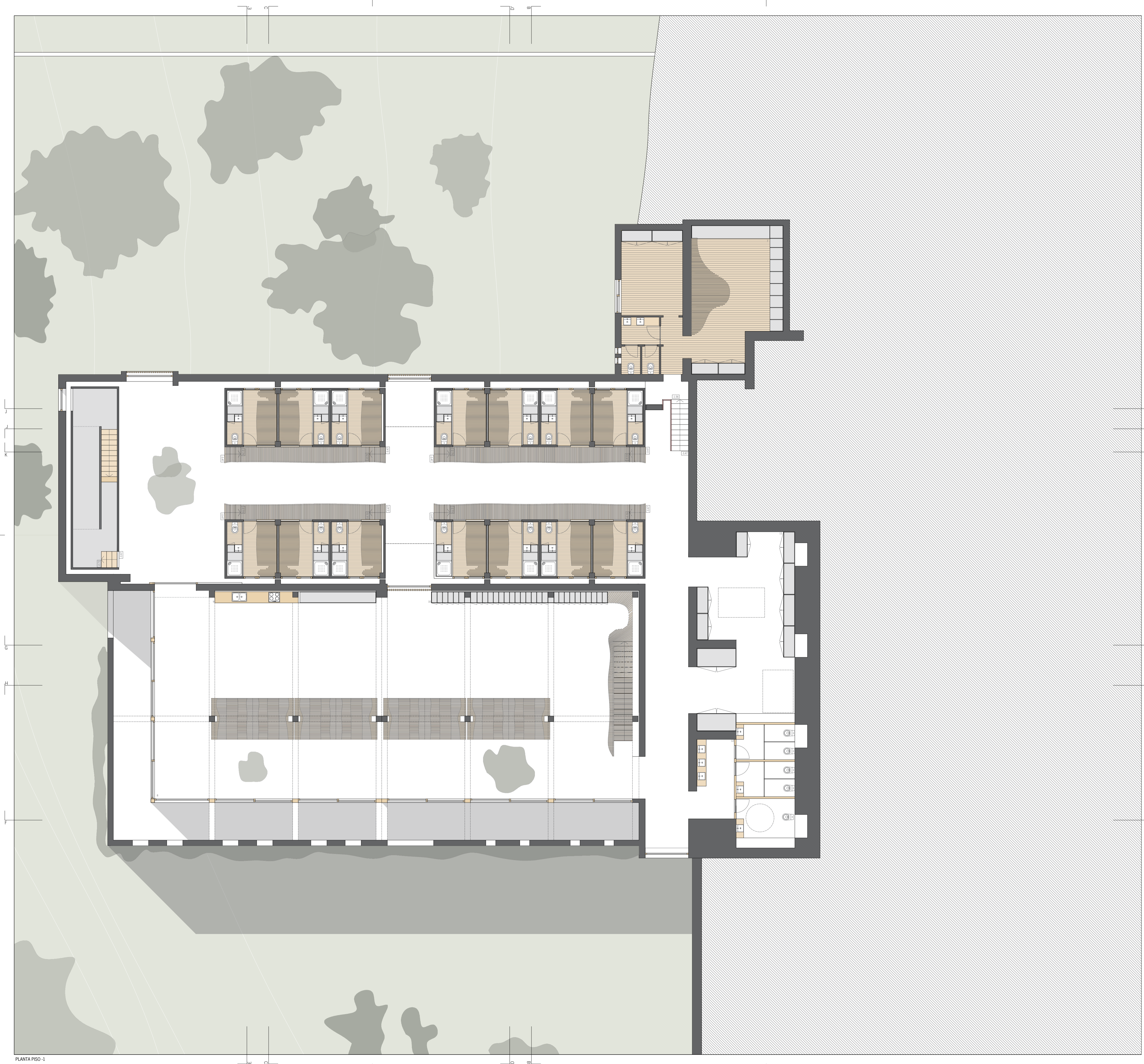
ADAPTABILIDADE DO CONSTRUÍDO: RECONVERSÃO DA ANTIGA ADEGA COOPERATIVA DE BRAGA EM COABITAÇÃO  
 DISSERTAÇÃO DE MESTRADO - CICLO DE ESTUDOS INTEGRADOS CONDUCENTES AO GRAU DE MESTRE EM ARQUITECTURA

HÉLIO RIBEIRO PEIXOTO  
 DESENHOS DA PROPOSTA

PLANTA PISO 0

ESCALA 1:100 **5**<sub>16</sub>





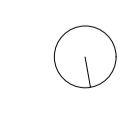
ISOMETRIA

LEGENDA:

- 7. LAVANDÁRIA
- 8. ZONA MULTIFUNCIONAL
- 9. COZINHA
- 10. CACIFOS
- 11. ZONA DE ARRUMOS
- 12. INSTALAÇÃO SANITÁRIA

MATERIAIS:

- BETÃO ARMADO / GRANITO
- MADERA



ADAPTABILIDADE DO CONSTRUIDO: RECONVERSÃO DA ANTIGA ADEGA COOPERATIVA DE BRAGA EM COABITAÇÃO  
DISSERTAÇÃO DE MESTRADO - CICLO DE ESTUDOS INTEGRADOS CONDUCENTES AO GRAU DE MESTRE EM ARQUITECTURA

HÉLIO RIBEIRO PEIXOTO  
DESENHOS DA PROPOSTA

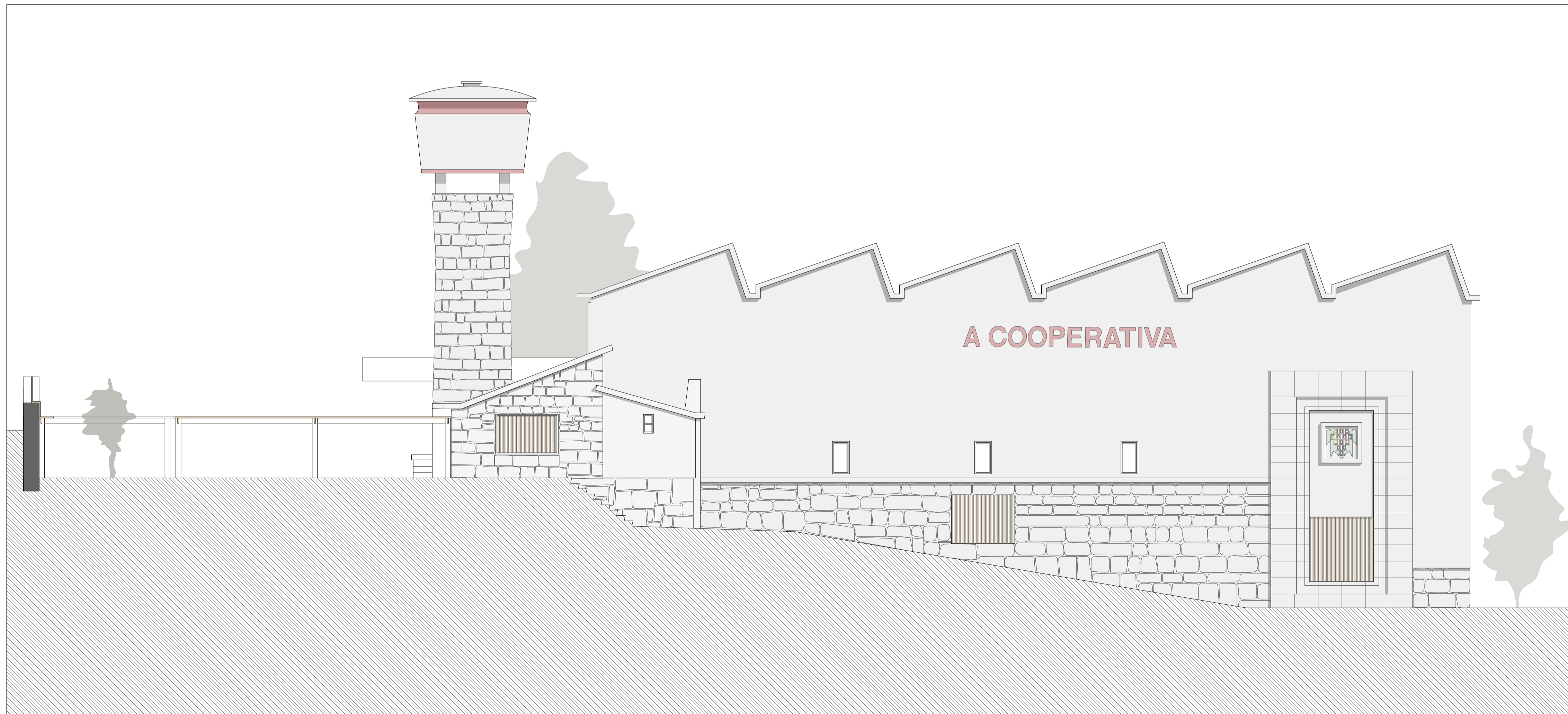
PLANTA PISO -1

ESCALA 1:100 6/16

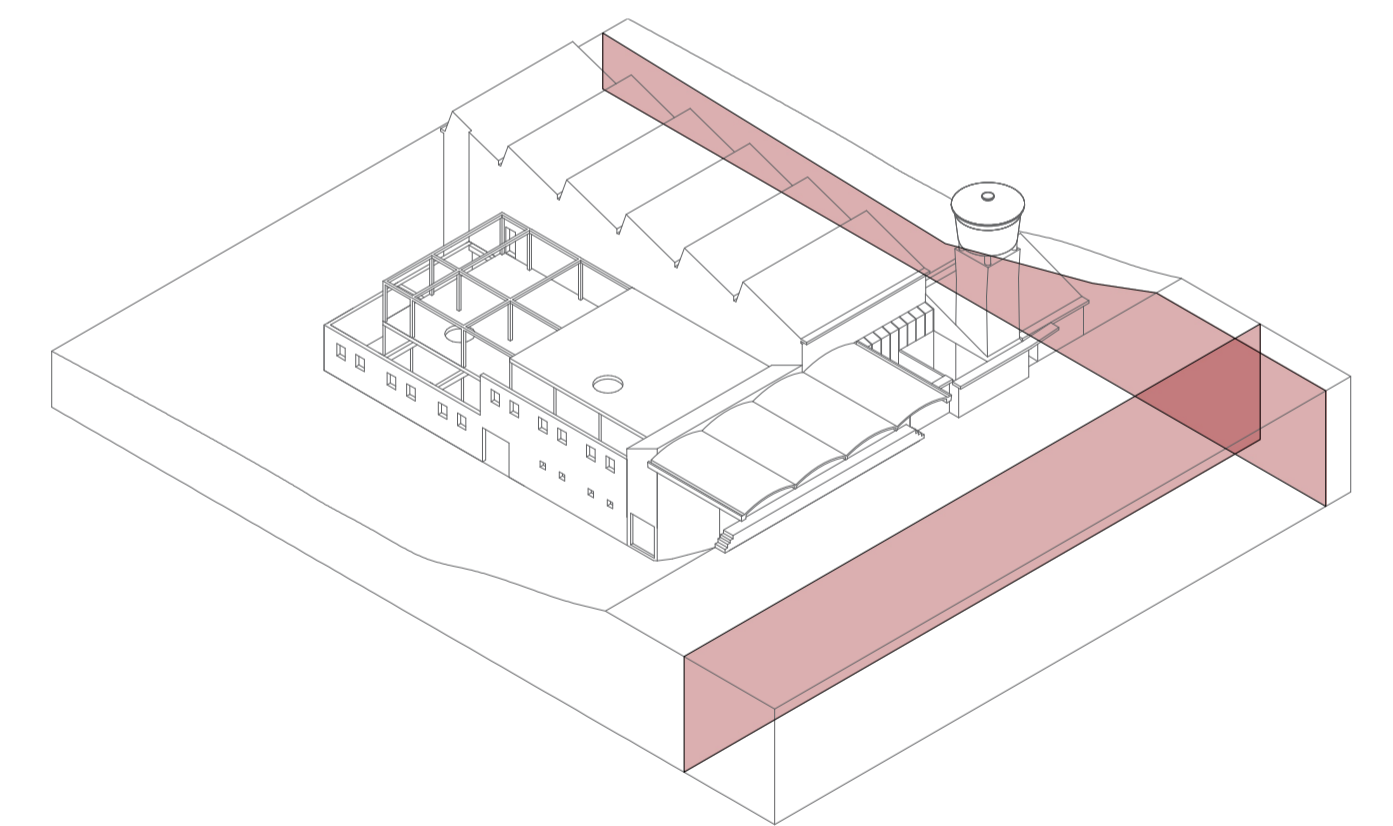




ALCADO OESTE



ALCADO SUL



ISOMETRIA

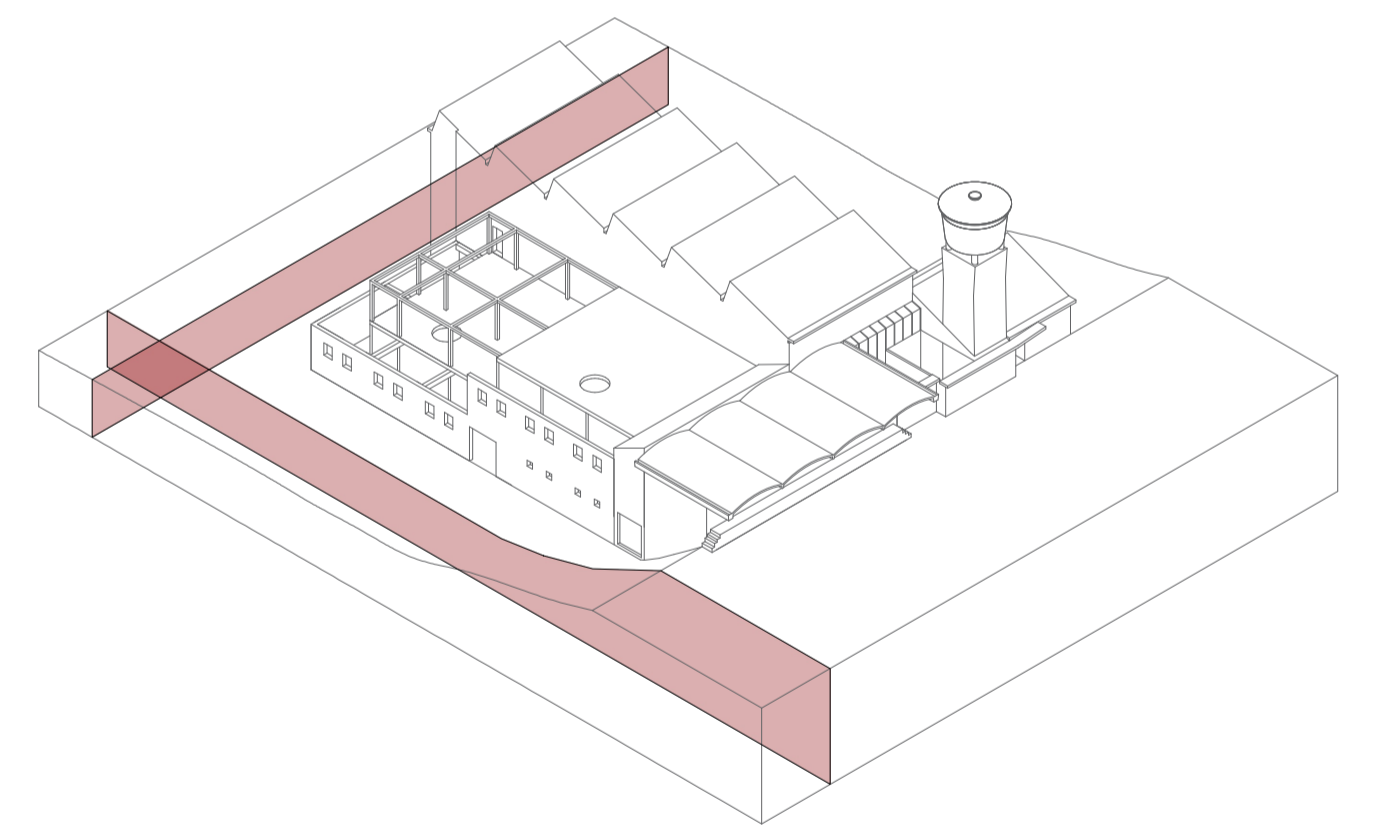
- MATERIAIS:
- BETÃO ARMADO / GRANITO
  - MADEIRA



ALCADO ESTE



ALCADO NORTE



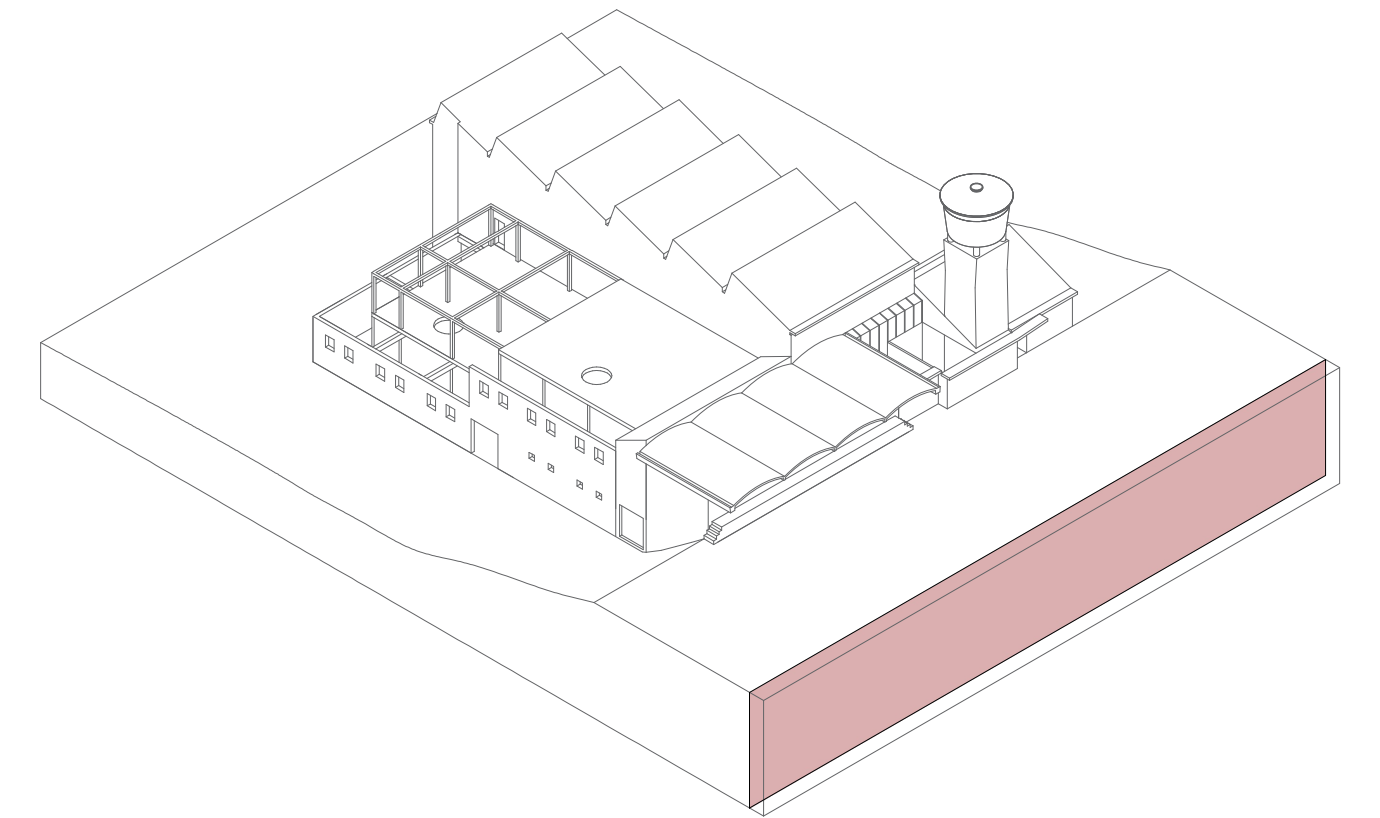
ISOMETRIA

- MATERIAIS:
- BETÃO ARMADO / GRANITO
  - MADEIRA





CORTE AA'



ISOMETRIA

- MATERIAIS:
- BETÃO ARMADO / GRANITO
  - MADEIRA

ADAPTABILIDADE DO CONSTRUÍDO: RECONVERSÃO DA ANTIGA ADEGA COOPERATIVA DE BRAGA EM COABITAÇÃO  
 DISSERTAÇÃO DE MESTRADO - CICLO DE ESTUDOS INTEGRADOS CONDUCENTES AO GRAU DE MESTRE EM ARQUITECTURA

HÉLIO RIBEIRO PEIXOTO  
 DESENHOS DA PROPOSTA

CORTES AA'

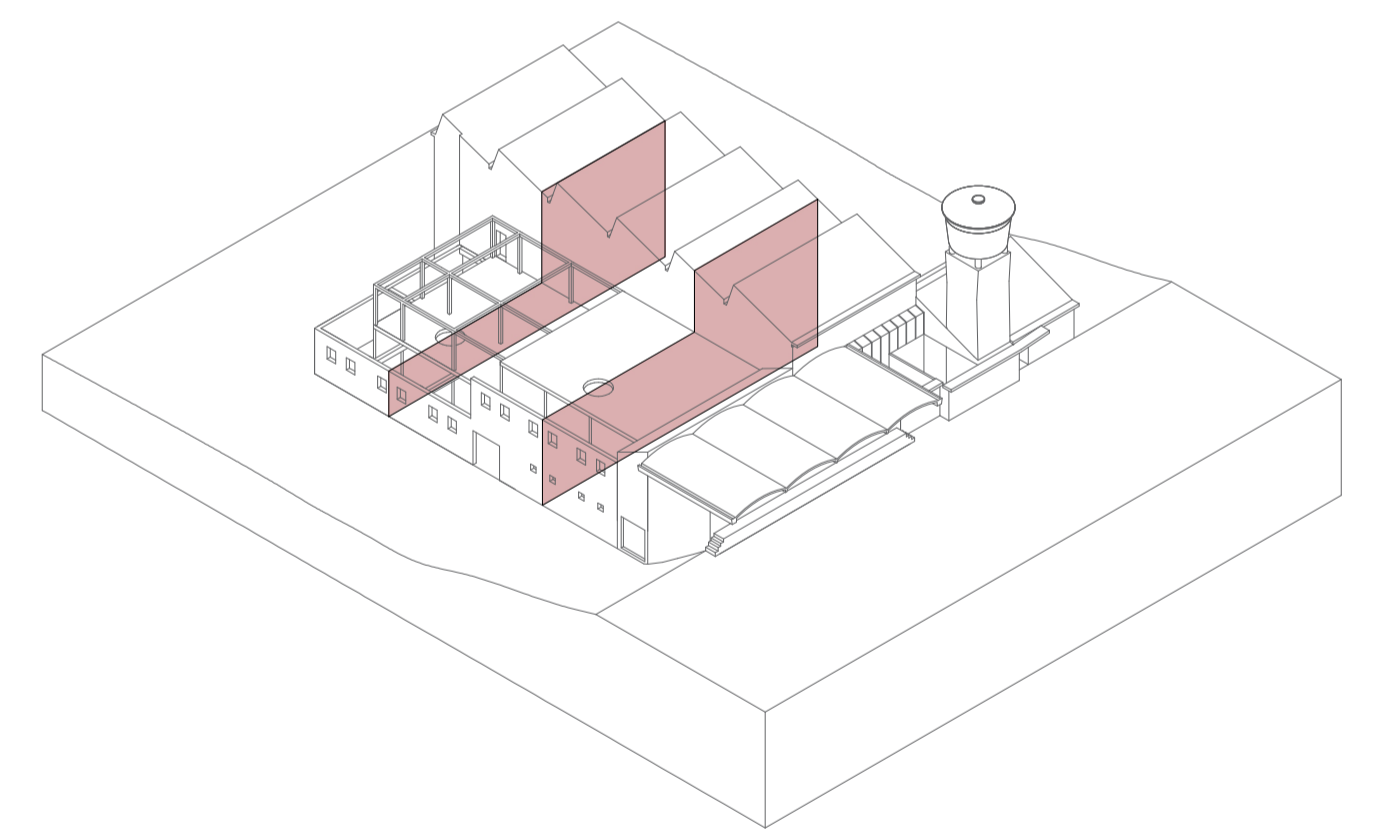
ESCALA 1:100



CORTE BB



CORTE CC



ISOMETRIA

- MATERIAIS
- BETÃO ARMADO / GRANITO
  - MADEIRA

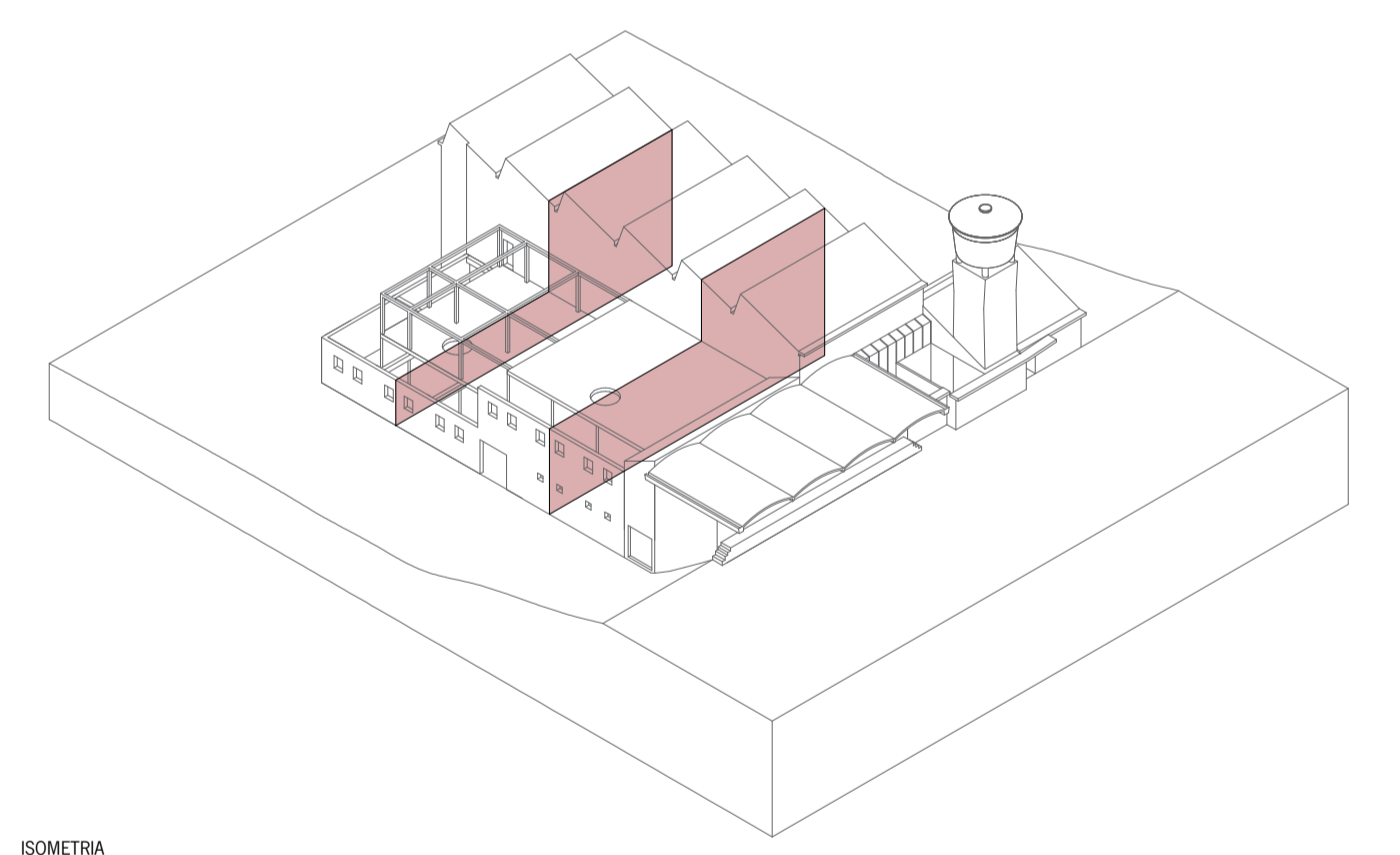




CORTE DD



CORTE EE



ISOMETRIA

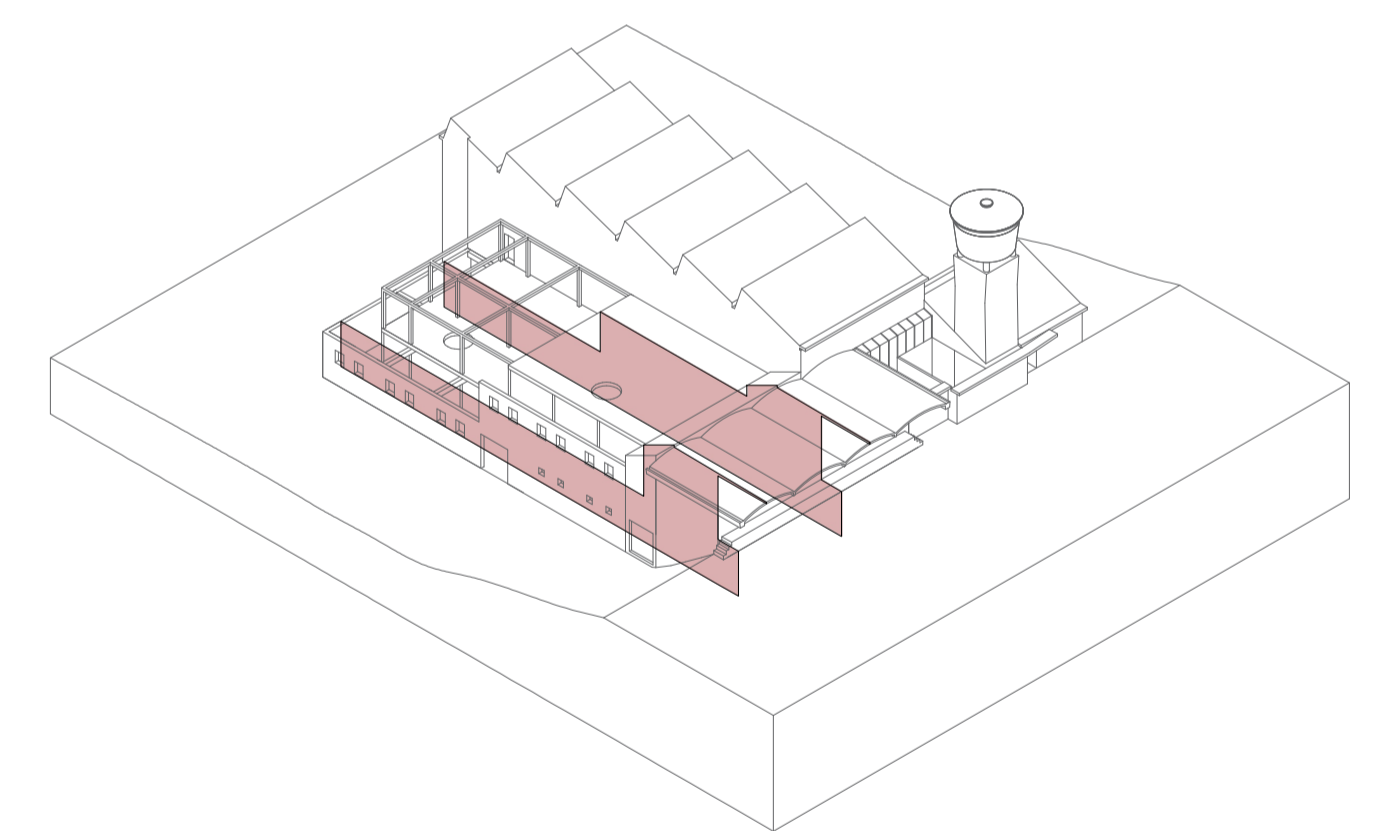
- MATERIAIS
- BETÃO ARMADO / GRANITO
  - MADEIRA



CORTE FF



CORTE GG



ISOMETRIA

- MATERIAIS:
- BETÃO ARMADO / GRANITO
  - MADEIRA

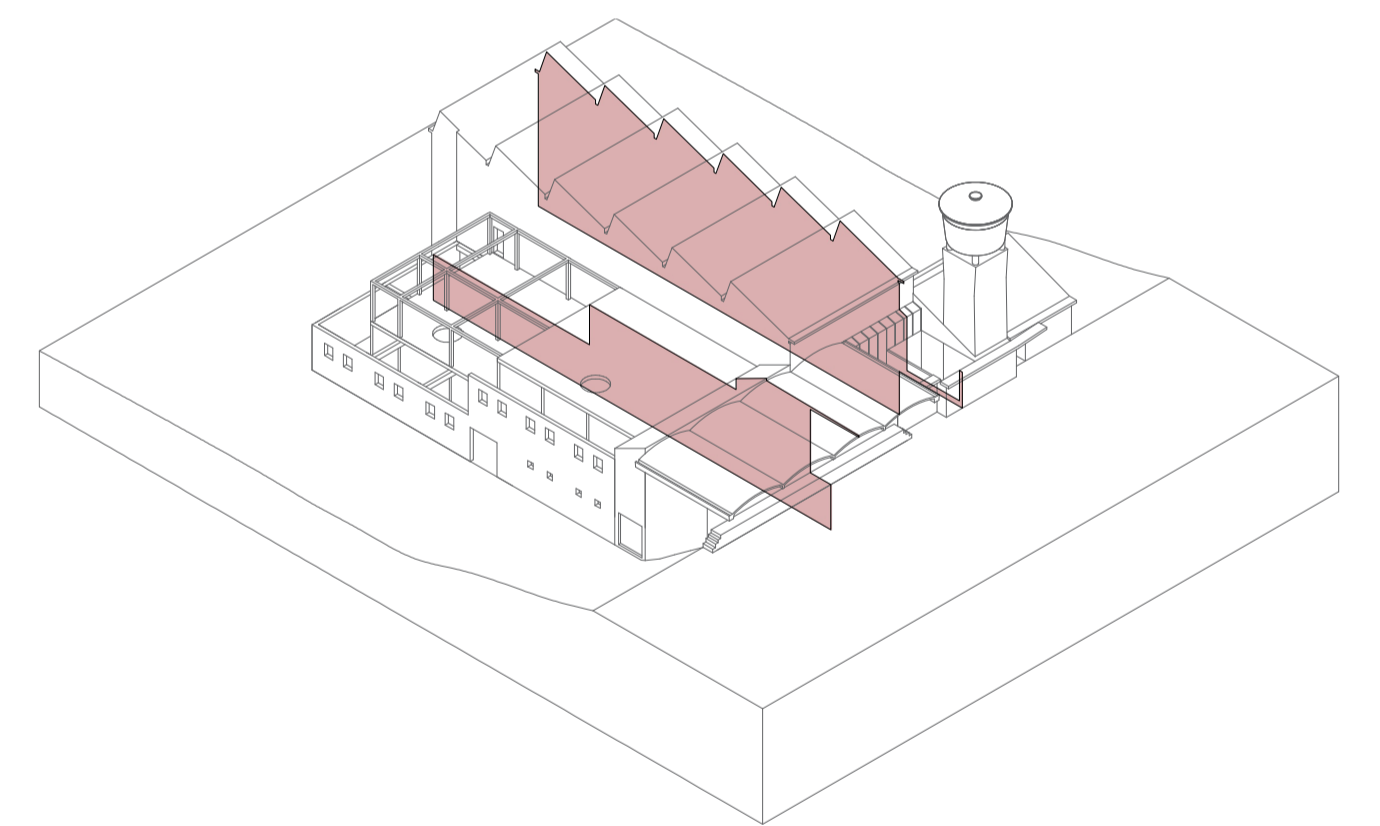




CORTE HH



CORTE II

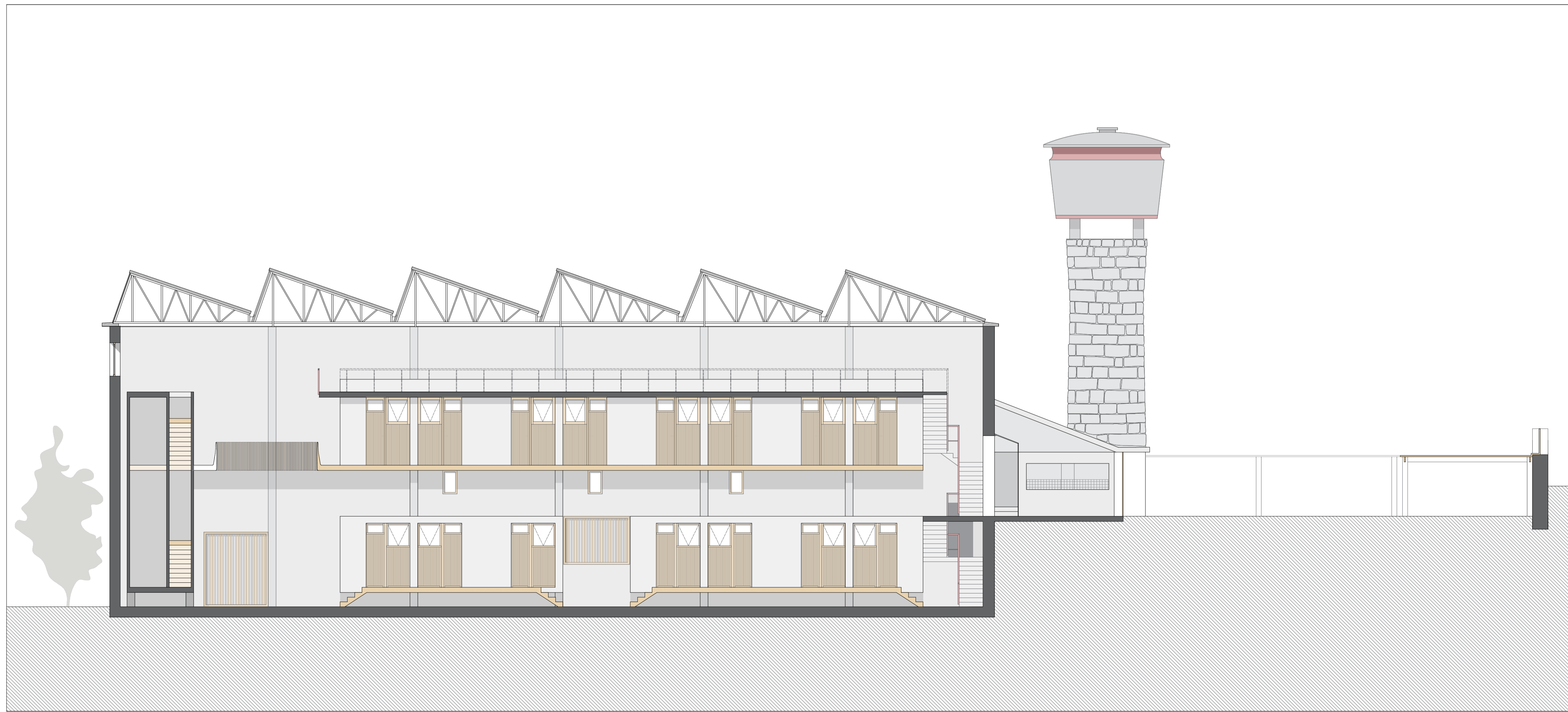


ISOMETRIA

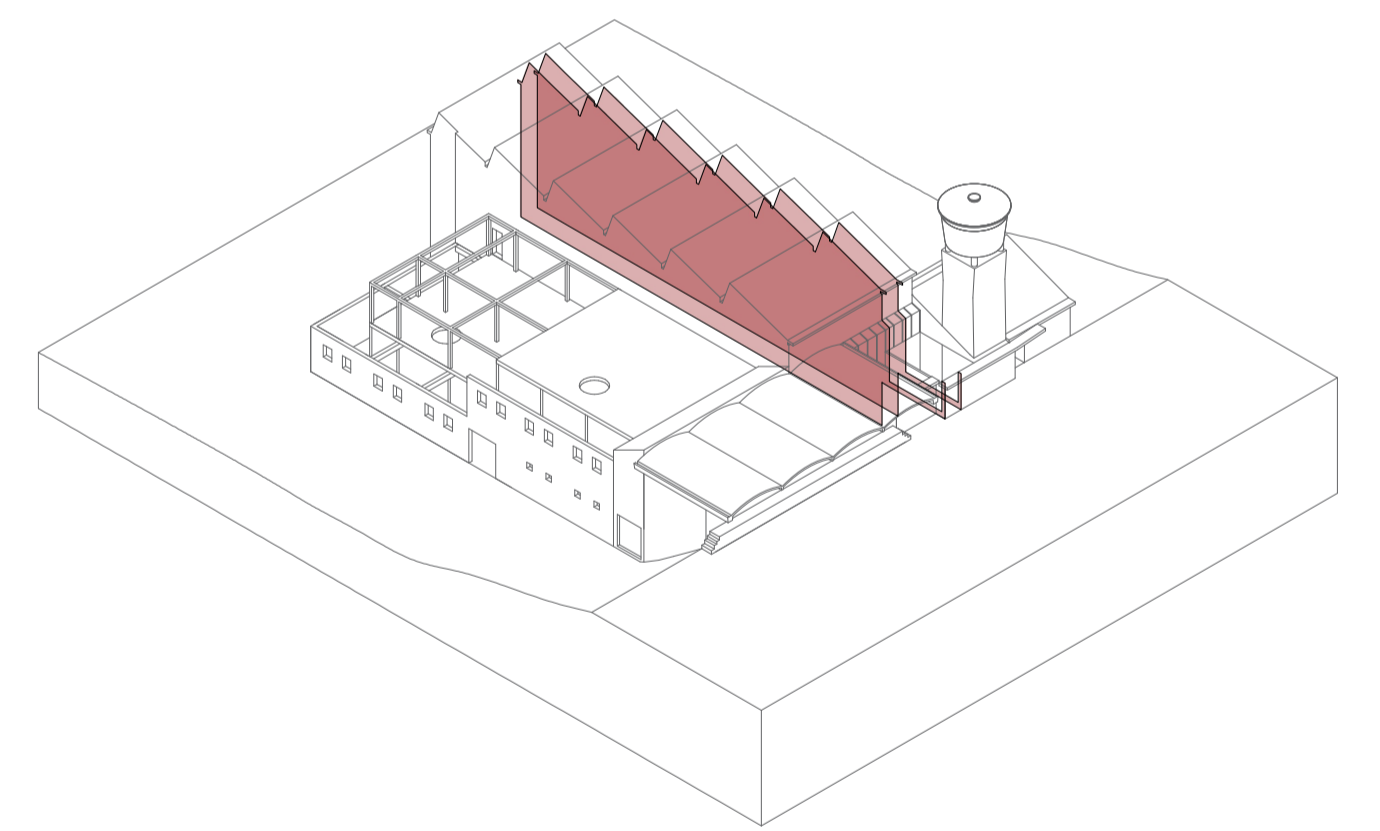
- MATERIAIS:
- BETÃO ARMADO / GRANITO
  - MADEIRA



CORTE JJ



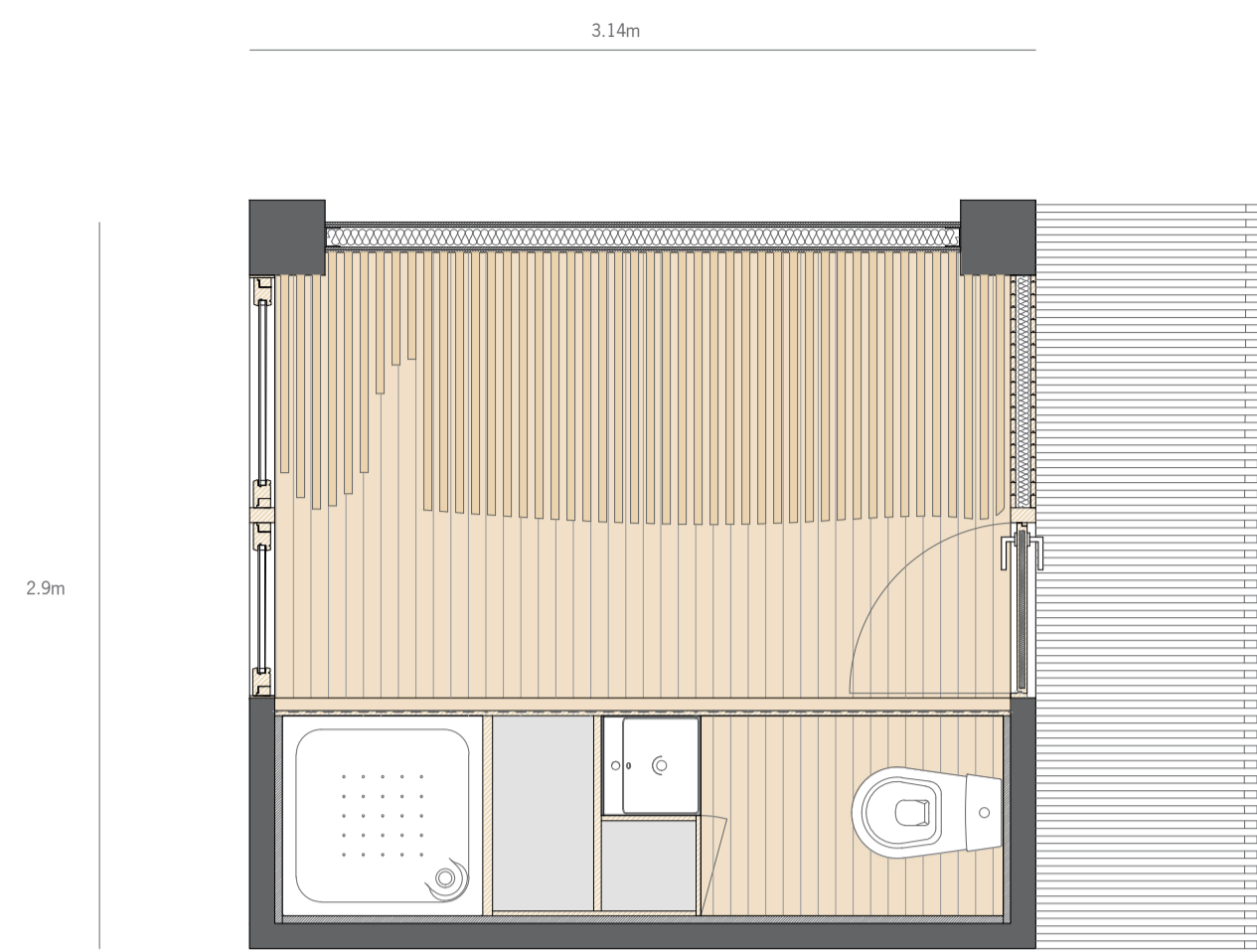
CORTE KK



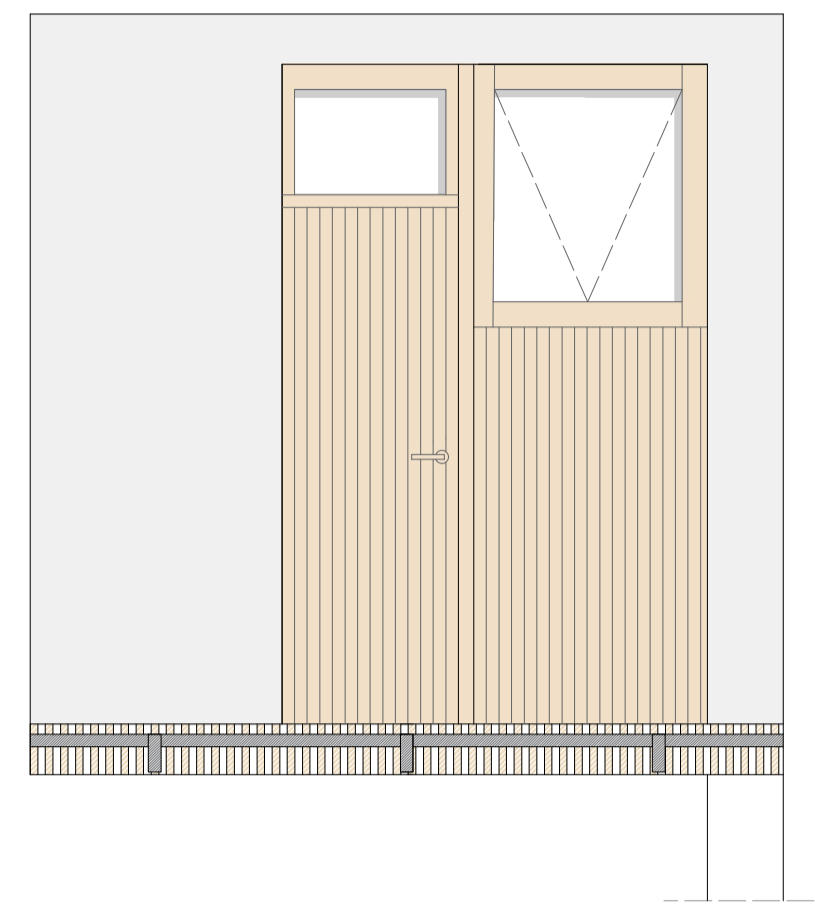
ISOMETRIA

- MATERIAIS:
- BETÃO ARMADO / GRANITO
  - MADEIRA

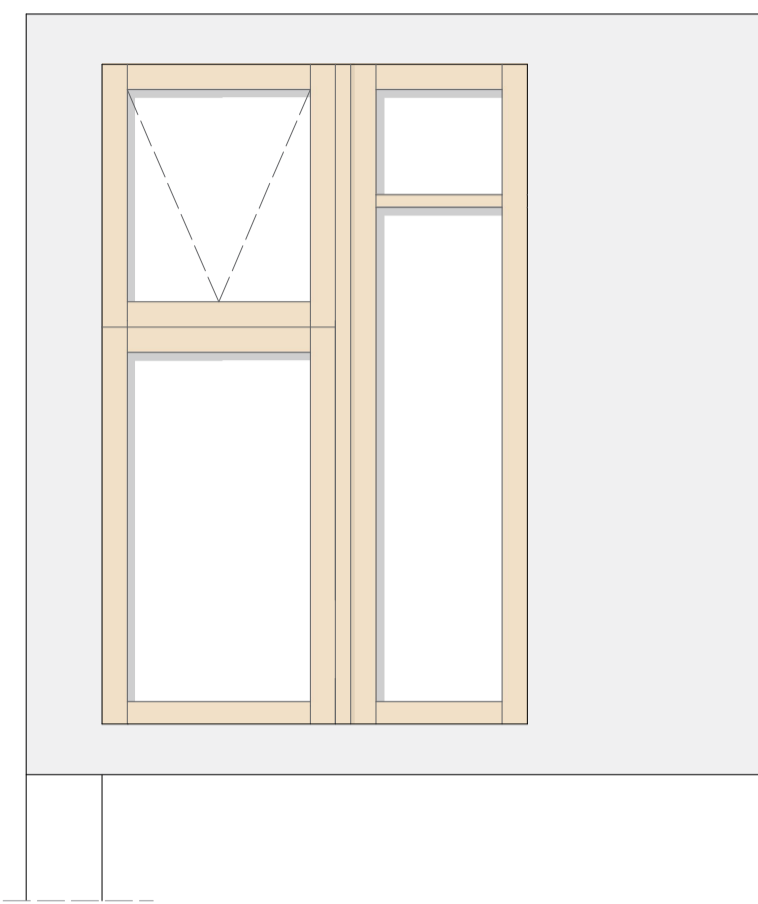




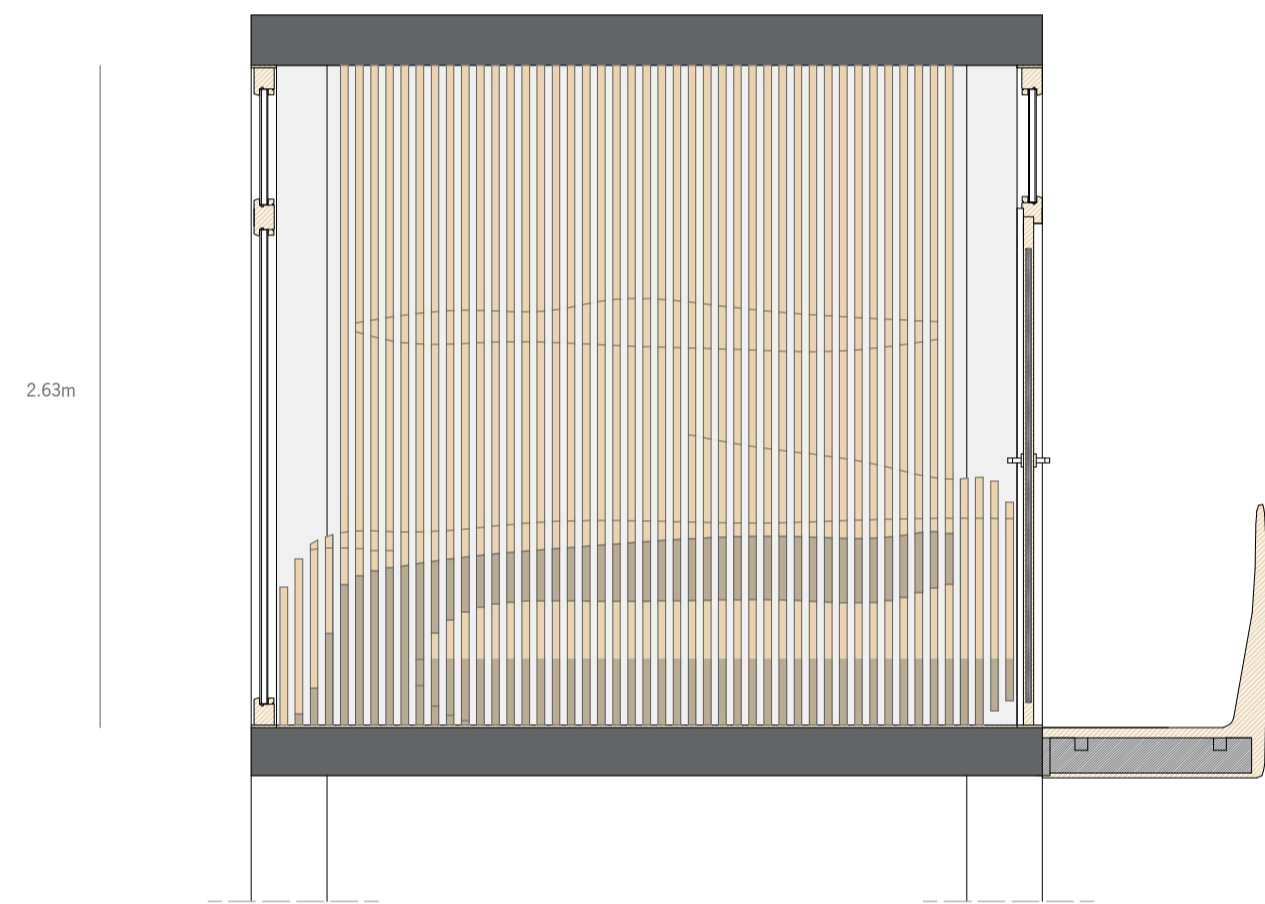
PLANTA



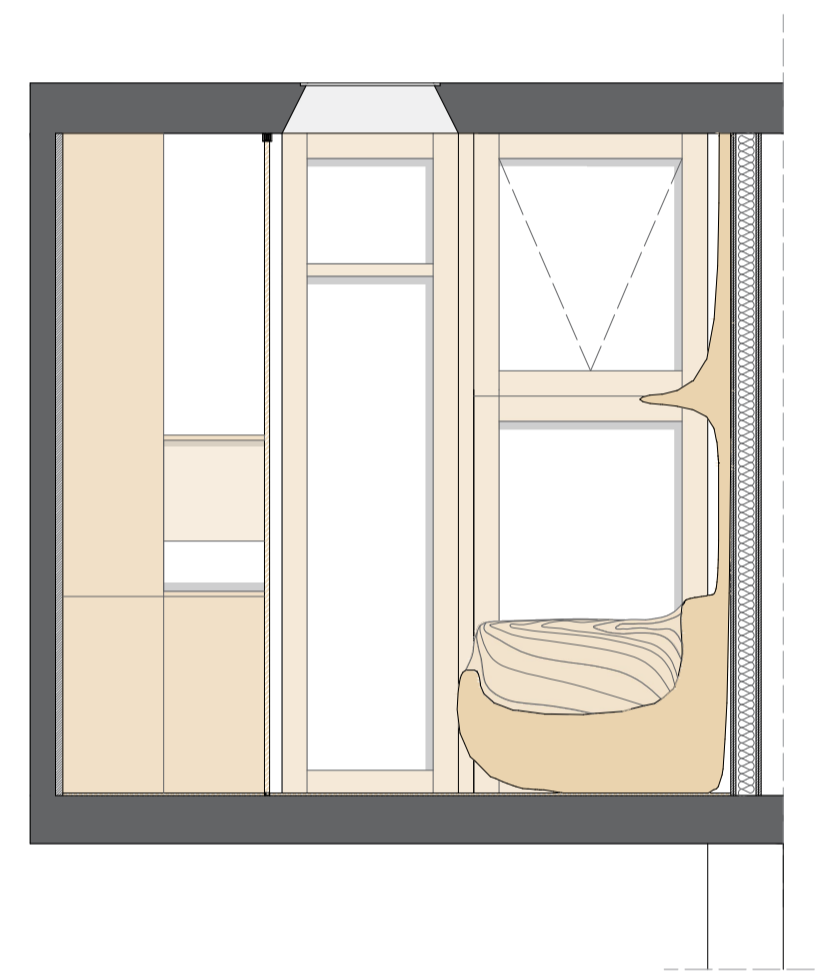
ALCADO ENTRADA



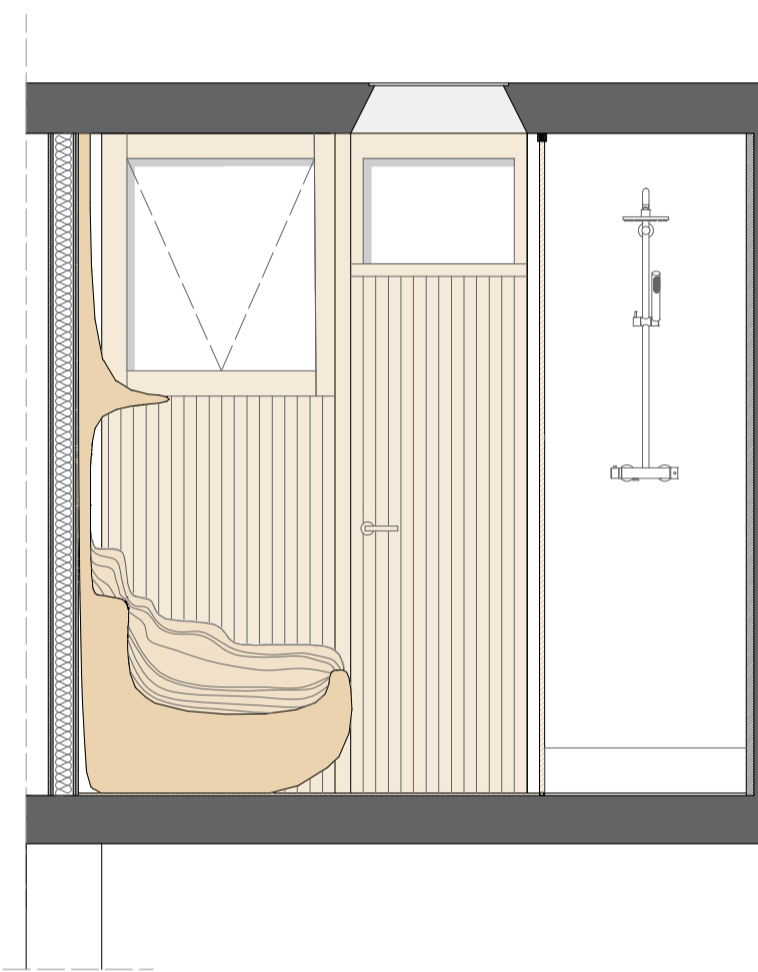
ALCADO TARDOZ



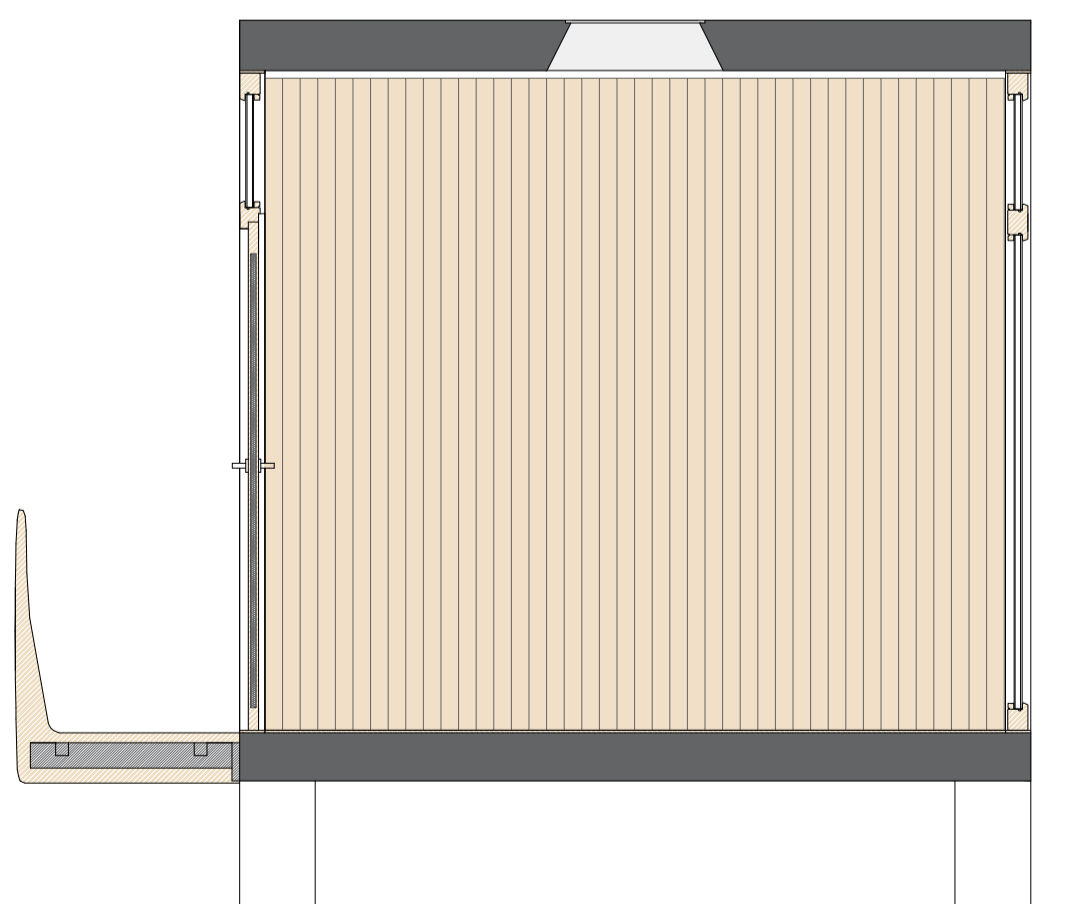
CORTE LL'



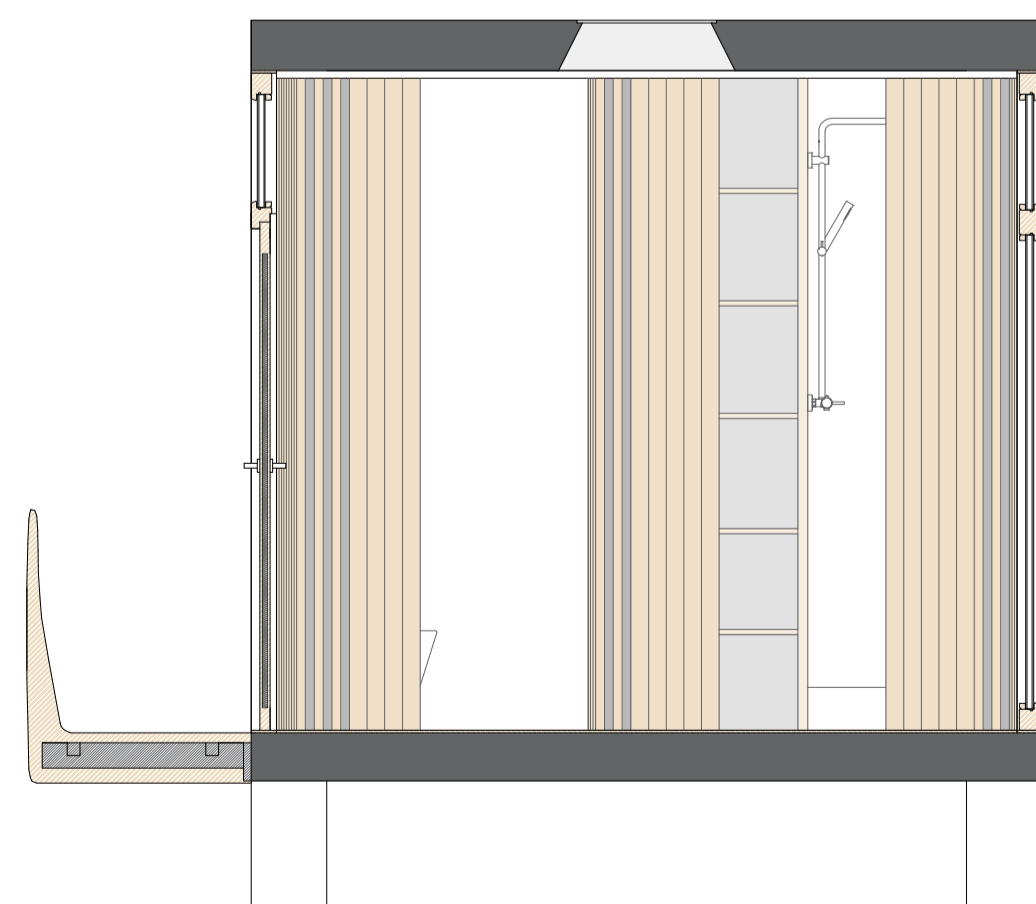
CORTE MM'



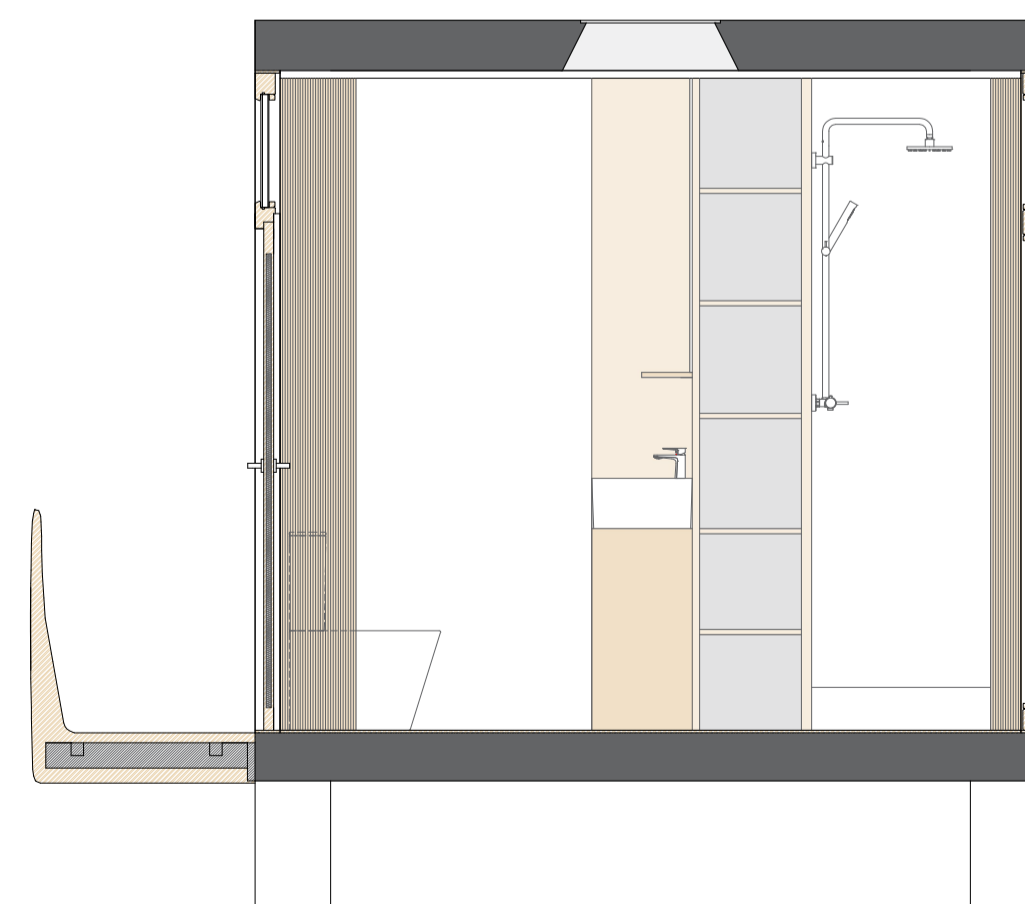
CORTE NN'



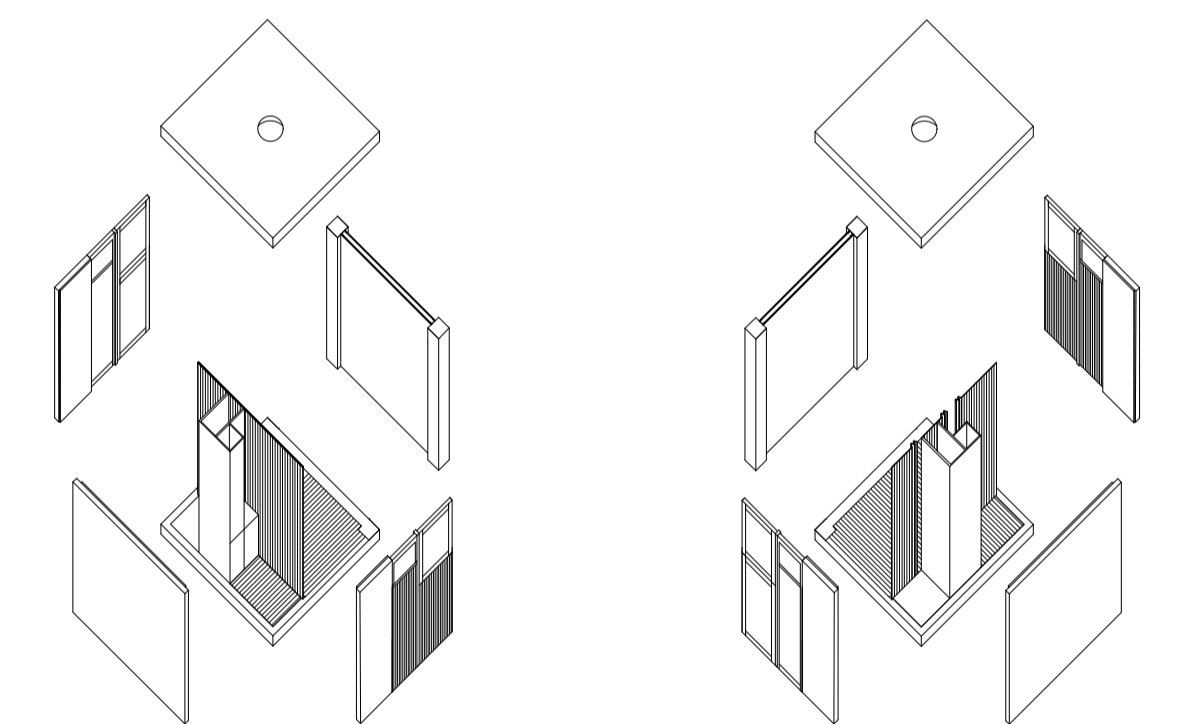
CORTE OO'



CORTE OO'

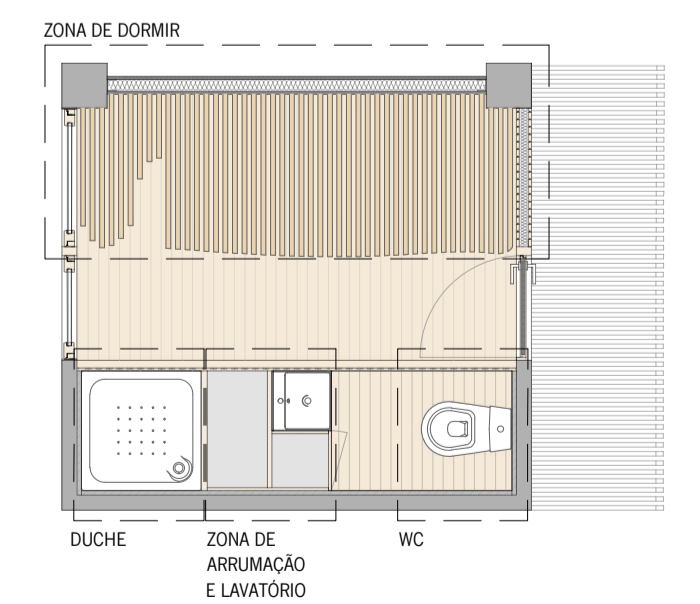


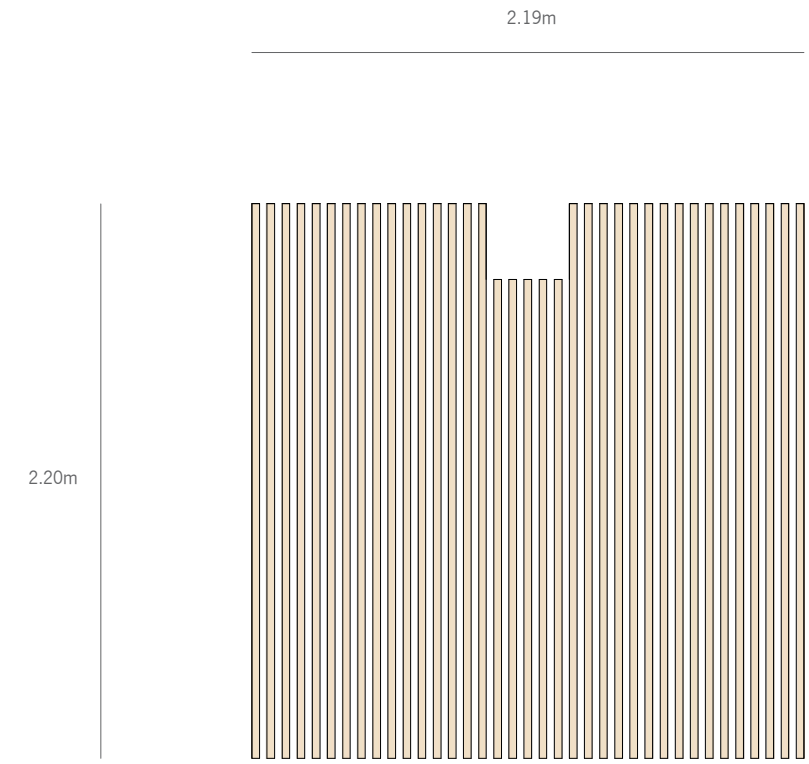
CORTE OO'



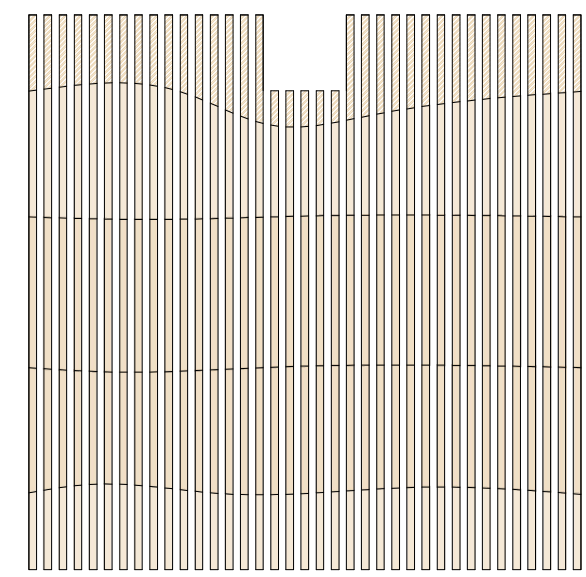
ISOMETRIA EXPLODIDA

- MATERIAIS:
- BETÃO ARMADO
  - MADEIRA
  - GESSO ACARTONADO
  - LÃ DE ROCHA

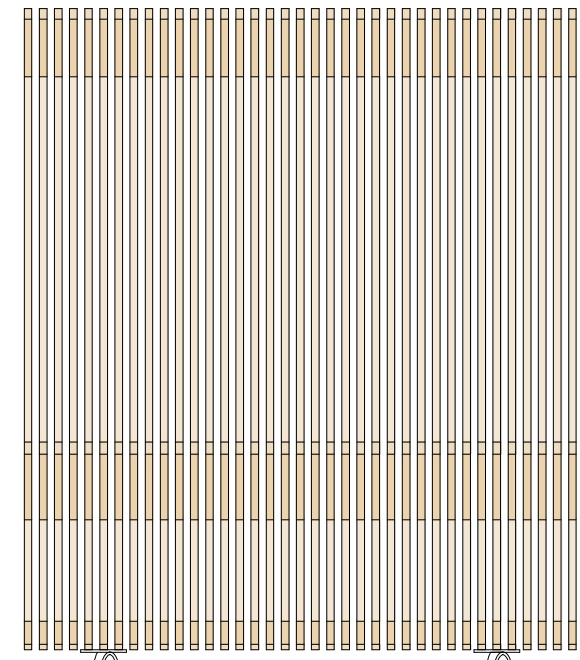




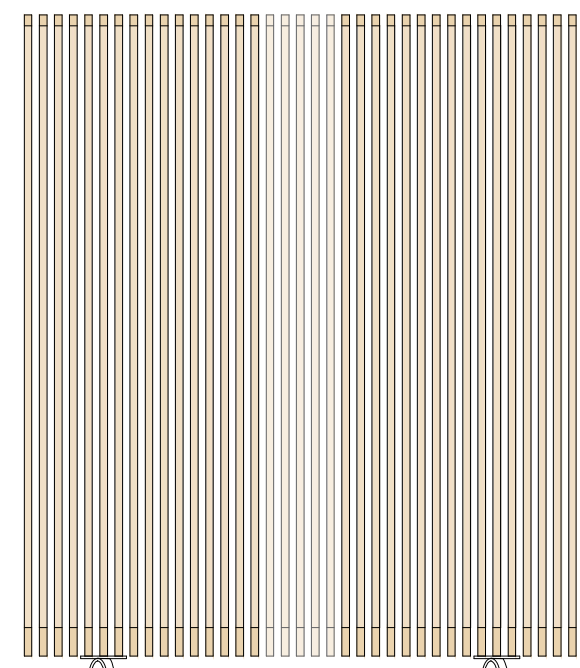
VISTA DE CIMA



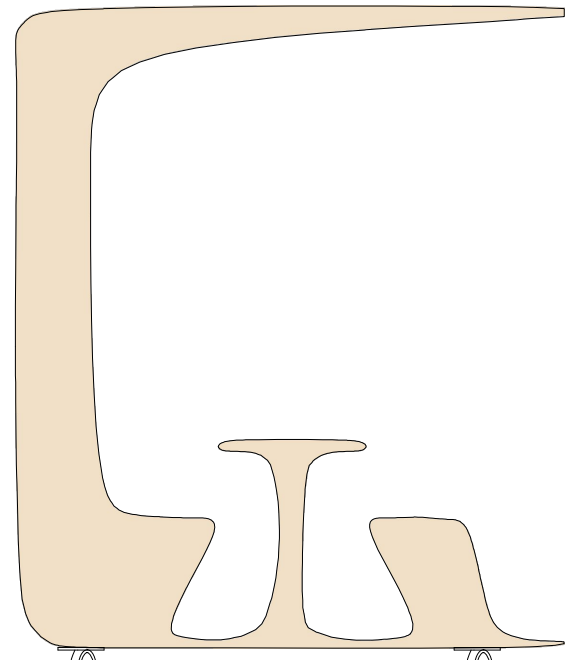
CORTE



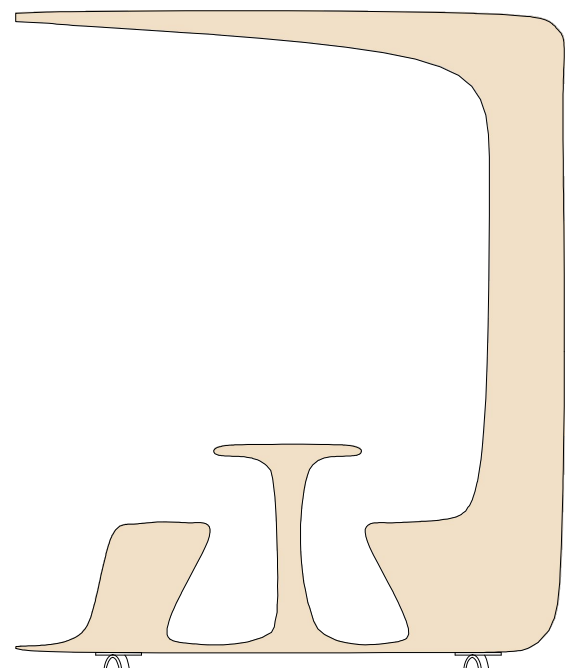
ALÇADO FRONTAL



ALÇADO TARDOZ

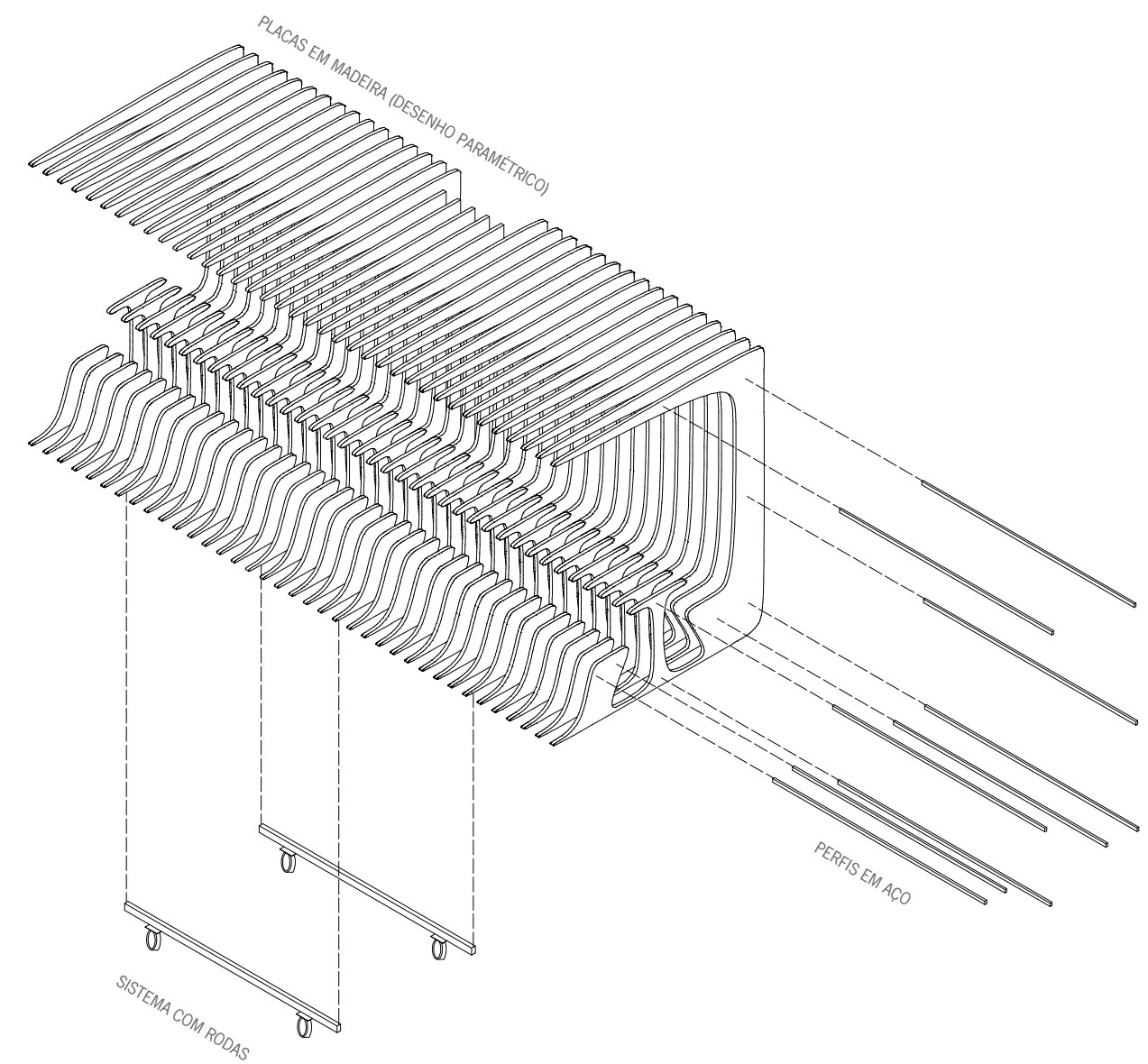


ALÇADO LATERAL

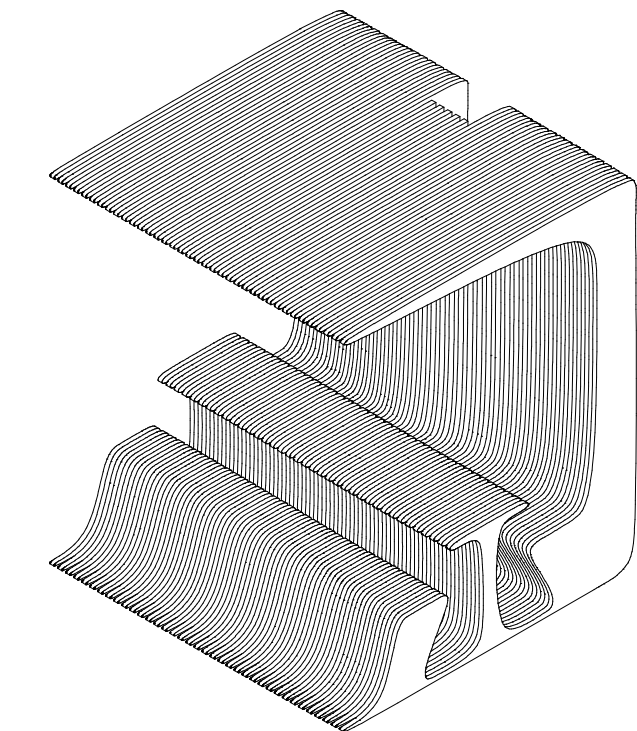


ALÇADO LATERAL

2.70m



ISOMETRIA EXPLODIDA  
1:50



ISOMETRIA  
1:40

MATERIAIS:  
MADEIRA