

The role of hydrodynamic stress on the phenotypic characteristics of single and binary biofilms of *Pseudomonas fluorescens*

M. Simões¹, M. O. Pereira¹, M. J. Vieira¹

¹Centro de Engenharia Biológica – CEB, Universidade do Minho, 4710-057 Braga, Portugal

(E-mail: mjvsimoes@deb.uminho.pt; mopereira@deb.uminho.pt; mjv@deb.uminho.pt)

Abstract

This study investigates the phenotype of turbulent (Re = 5200) and laminar (Re = 2000) flow-generated *P. fluorescens* biofilms. Three *P. fluorescens* strains, the type strain–ATCC 13525 and two strains isolated from an industrial processing plant - D3-348 and D3-350, were used throughout this study. The isolated strains were used to form single and binary biofilms. The biofilm physiology (metabolic activity, cellular density, mass, extracellular polymeric substances, structural characteristics and outer membrane proteins-OMP expression) was compared. The results indicate that, for every situation, turbulent flow-generated biofilms were more active ($P < 0.05$), had more mass *per cm*² ($P < 0.05$), a higher cellular density ($P < 0.05$), distinct morphology, similar matrix proteins ($P > 0.1$) and identical (isolated strains - single and binary biofilms) and higher (type strain) matrix polysaccharides contents ($P < 0.05$) than laminar flow-generated biofilms. Flow-generated biofilms formed by the type strain revealed a considerable higher cellular density and amount of matrix polysaccharides than single and binary biofilms formed by the isolated strains ($P < 0.05$). Similar OMP expression was detected for the several single strains and for the binary situation, not dependent on the hydrodynamic conditions. Binary biofilms revealed an equal coexistence of the isolated strains with apparent neutral interactions.

In summary, the biofilms formed by the type strain represent, apparently, the worst situation in a context of control. The results obtained clearly illustrate the importance of considering strain variation and hydrodynamics in biofilm development and complements previous studies which have focused on physical aspects of structural and density differences.

Keywords: Binary biofilms; Biofilm structure and activity; Hydrodynamic conditions; Phenotypic characterization; Strain variation; Turbulent and laminar flows

Introduction

The formation of biofilms is a universal bacterial survival strategy. Important mechanisms involved in biofilm formation and control are complex and only partially understood. A representative biofilm characterization is essential in order to develop reliable methods to eliminate specific sources of bacterial contamination associated with biofilms. Furthermore, detailed knowledge of the environmental conditions on biofilm characteristics and behaviour is essential in order to create effective control strategies. One of the most important factors affecting biofilm structure and behaviour is the velocity field of the fluid in contact with the microbial layer (Vieira *et al.* 1993; Stoodley *et al.* 1999; Pereira *et al.* 2002). In an engineered sense, the hydrodynamic conditions can be manipulated, as a control parameter. Hydrodynamic conditions will determine the rate of transport of cells and nutrients to the surface, as well as the magnitude of shear forces acting on a developing biofilm. Thus, these conditions

significantly influence many of the processes involved in biofilm development (Vieira *et al.* 1993).

Another important feature encountered in real conditions is the heterogeneity of the microbial community. In fact, significant proportions of all microorganisms are associated in complex multi-species biofilms, performing community level processes (Fux *et al.* 2005; Møller *et al.* 1998). According to Fux *et al.* (2005), growth within mixed communities in real world complex environments contrasts with the standardized and idealized conditions in laboratory conditions and it appears that no bacterial strain can truly represent its species. Microbial diversity provides a reservoir of strains with different physiological traits that benefit the performance and stability of the best-adapted strain alone (von Canstein *et al.* 2002).

The main objective of this study was to evaluate the influence of hydrodynamic conditions and strain variation on biofilm formation and phenotype of *P. fluorescens* single and binary biofilms.

Materials and Methods

Bacteria

Three different *Pseudomonas fluorescens* strains were used throughout this work:

The type strain (13525) purchased from the American Type Culture Collection used to form single biofilms; Two strains isolated from an industrial process (Dogan and Boor, 2003) - D3-348 (extracellular protease negative) and D3-350 (extracellular protease positive) used to form single and binary biofilms.

Bacterial growth was performed in a 0.5 L chemostat aerated, agitated, and continuously fed (10 mL/h) with growth media consisting of 5 g/L glucose, 2.5 g/L peptone and 1.25 g/L yeast extract, in phosphate buffer at pH 7 (Simões *et al.* 2005a).

Flow Cell Reactor

A flow cell described by Pereira *et al.* (2001) was used to form biofilm under different flow conditions on ASI 316 stainless steel slides. Two flow cells were operating in parallel, to obtain one flow cell working under laminar flow (Reynolds number – $Re = 2000$, $u = 0.204$ m/s) and the other under turbulent flow ($Re = 5200$, $u = 0.532$ m/s). The system was continuously fed (1.7 L/h) with sterile minimal nutrient medium containing of 50 mg/L glucose, 25 mg/L peptone, 12.5 mg/L yeast extract in phosphate buffer (pH 7) and *P. fluorescens* in the exponential phase of growth, provided by the 0.5 L chemostat, in order to circulate a diluted bacterial suspension (6×10^7 cells/mL) in the flow cells. The biofilms were allowed to grow for 7 days in order to obtain steady-state biofilms (Pereira *et al.* 2001). In the case of binary biofilms, two independent 0.5 L chemostats were used (one with D3-348 and the other with D3-350). The flow cell system was inoculated with the two strains and was fed with minimal nutrient medium at a flow rate two times higher (3.4 L/h) than the one used for biofilm formation by a single strain, in order to obtain the adequate dilution rate.

Sampling of biofilms

The biofilm that covered the metal slides was entirely removed from the slides, using a stainless steel scraper and then resuspended into 10 mL of extraction buffer (2 mM Na_3PO_4 , 2 mM NaH_2PO_4 , 9 mM NaCl and 1mM KCl, pH 7) and homogenised in a vortex (Heidolph, model Reax top) for 30 s with 100 % power input, according to the methodology described by Simões *et al.* (2005a). Binary biofilms were also streaked onto skim milk agar (Merck, VWR, Portugal) in order to estimate the proportion of protease negative and positive bacteria. Homogenised biofilm suspensions were then

used to assess, sequentially, morphological characteristics, respiratory activity, extracellular polymeric substances content, OMP expression and mass.

Extraction of extracellular polymeric substances

Extraction of the extracellular components of the biofilm was carried out using Dowex resin (50X 8, NA⁺ form, 20-50 mesh, Aldrich-Fluka 44445) according to the procedure described by Frølund *et al.* (1996). The biofilms were resuspended in 20 mL of extraction buffer and 50 g of Dowex resin *per g* of volatile solids were added to the biofilm suspension and the extraction took place at 400 min⁻¹ for 4 h at 4 °C. The extracellular components were separated from the cells through centrifugation (3777 g, 5 min).

Respiratory activity assessment

Biofilm respiratory activity assays were performed in a model 53 Yellow Springs Instruments (Ohio, USA) Biological oxygen monitor (BOM) as described previously (Simões *et al.* 2005b).

Biomass quantification

The dry biofilm mass was assessed by the determination of the total volatile solids (TVS) according to the Standard Methods (1989), method number 2490 A-D.

Proteins and polysaccharides

The proteins were determined by the Lowry modified method using bovine serum albumin as standard (Sigma, Portugal, Cat. No. P5656) and the polysaccharides by the phenol-sulphuric acid method of Dubois *et al.* (1956) using glucose as standard.

Direct cell counts

After the extraction procedure the cells separated from the extracellular products were diluted to an adequate concentration, being thereafter stained with 4',6-diamidino-2-phenylindole – DAPI (Sigma Cat. No. D-9542) as described by Saby *et al.* (1997) and inspected by epifluorescence microscopy. A program path (Sigma Scan Pro 5) involving object measurement and data output was used to quantify the number of cells.

Scanning Electron Microscopy Observations

Scanning electron microscopy (SEM) inspections were performed according to the procedure described by Simões *et al.* (2003).

Statistical analysis

The data were analysed using the statistical program SPSS version 14.0 (Statistical Package for the Social Sciences). Because low samples numbers contributed to uneven variation, nonparametric Wilcoxon test procedure was used to compare biofilm characteristics. Statistical calculations were based on confidence level equal or higher than 95 % ($P < 0.05$ was considered statistically significant).

Results and Discussion

Turbulent and laminar flow-generated biofilms – metabolic activity, mass and cellular density

Fig. 1 presents the respiratory activity, mass and cellular density of turbulent and laminar flow flow-generated biofilms formed by the several *P. fluorescens* strains as single and binary (by the industrial isolates) biofilms.

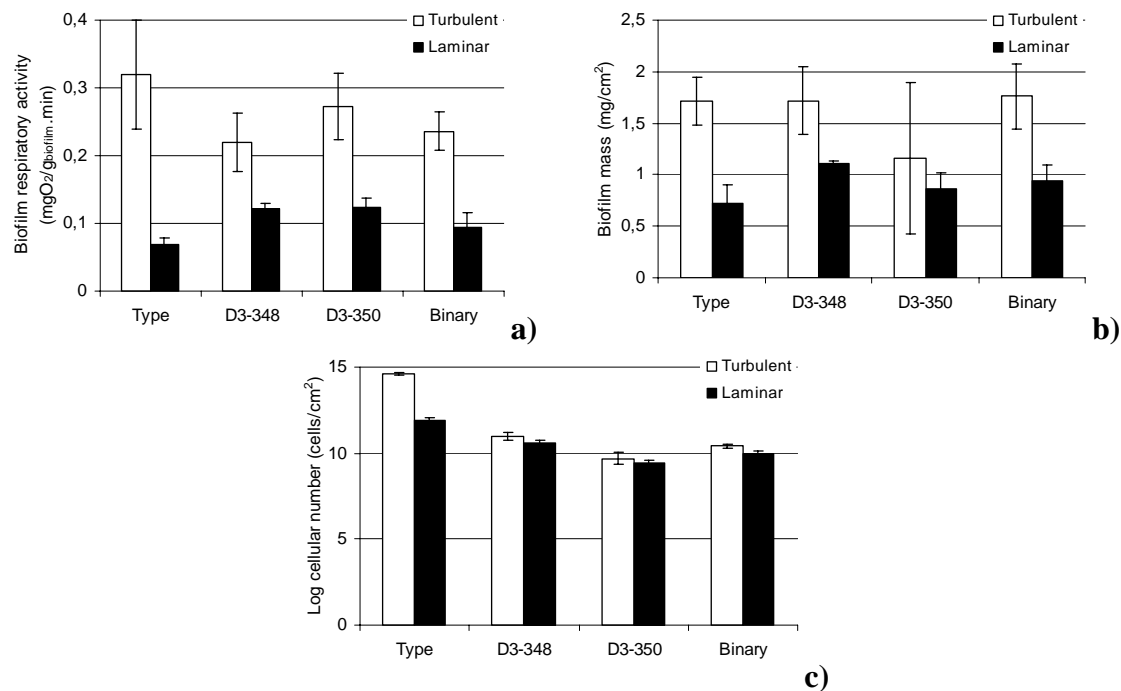


Fig. 1 Biofilm respiratory activity (a), mass (b) and cellular density (c) of the several *P. fluorescens* single and binary turbulent and laminar flow-generated biofilms.

Turbulent flow-generated biofilms are markedly distinct in terms of respiratory activity, mass and cellular density from the ones formed under laminar flow (Fig. 1). This phenomenon is evident for every strain as single and binary biofilms. Fig. 1a) shows that biofilms formed under turbulent flow were more active than the laminar flow-generated ones ($P < 0.05$). Turbulent flow-generated biofilms formed by the type strain presented the higher respiratory activity values, while D3-348 strain formed biofilms under turbulent flow with the smaller respiratory activity values. Concerning laminar flow-generated biofilms, the higher respiratory activity values were found for the single isolated strains, the type strain biofilms being the ones that presented the smaller respiratory activity. Comparing the respiratory activity of the four distinct biofilms grown under turbulent and laminar flow conditions, they are closely related within the same flow regime ($P > 0.1$).

Biofilm mass results (Fig. 1b) show that single and binary biofilms formed under turbulent flow had more mass *per* cm² than the ones formed under laminar flow ($P < 0.01$). Similar mass values were found for the turbulent flow-generated biofilms formed by the type strain, D3-348 and the binary strains, the biofilms formed by the strain D3-350 being the ones that presented the smaller mass values. However, a statistical analysis of the mass values for the turbulent flow-generated biofilms revealed that they are similar ($P > 0.05$). Although statistical analysis reveal that laminar flow-generated biofilms presented similar mass values ($P > 0.1$), D3-348 strain had the ability to form more mass than the single D3-350 strains and the binary biofilms. The type strain had the lower biofilm mass formation properties under laminar flow conditions.

Biofilms formed under turbulent flow had a higher cellular density *per* cm² for every situation studied (Fig. 1c) than the ones formed laminar flow ($P < 0.05$). The type strain formed both turbulent and laminar flow-generated biofilms with the highest cellular density when compared with the isolated strains as single and binary biofilms ($P < 0.05$). Biofilms formed by the D3-350 strain had the smaller cellular density for the two hydrodynamic conditions tested. Comparing statistically the single and binary biofilms

formed by the isolated strains (D3-348 and D3-350) and for the same hydrodynamic conditions they were similar ($P > 0.05$). Binary biofilm community analysis in terms of relative strain abundance (growth on skim milk medium for detection of protease negative and positive bacteria) revealed that both turbulent and laminar flow-generated biofilms were equally colonized by both strains (50% each strain – $P > 0.1$). Furthermore, the outer membrane proteins (OMP) from cells within the several biofilms were isolated and analyzed by SDS-PAGE, revealing no significant variation within the several strains used, with the biofilm formation under different hydrodynamic conditions and for the binary biofilms (results not shown).

Turbulent and laminar flow-generated biofilms – EPS and structure

Fig. 2 presents the matrix proteins and polysaccharides content of turbulent and laminar flow flow-generated biofilms formed by the several *P. fluorescens* strains as single and binary biofilms.

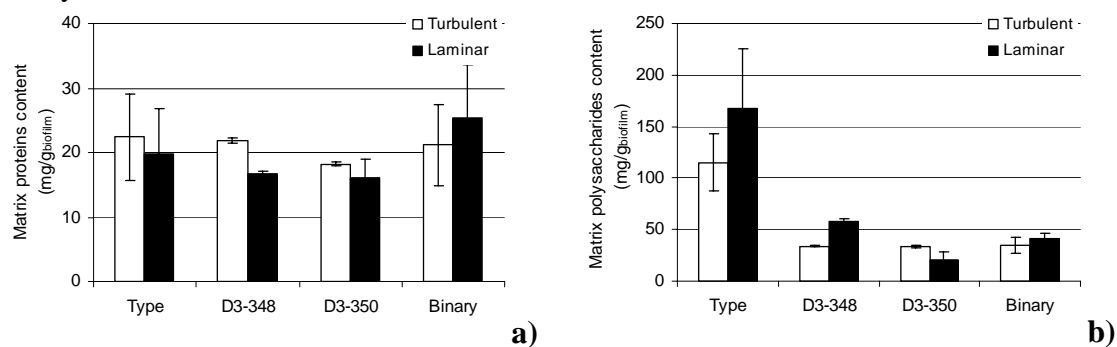


Fig. 2 Matrix proteins (a) and polysaccharides (b) content of the several *P. fluorescens* single and binary turbulent and laminar flow-generated biofilms.

From Fig. 2a) it can be seen that the amount of matrix proteins is similar when comparing turbulent and laminar flow-generated biofilms for the several strains as single and binary biofilms ($P > 0.1$). Matrix polysaccharides content were different ($P < 0.05$) when comparing turbulent and laminar flow-generated biofilms between the several studied single and binary strains biofilms. Biofilms formed by the type strain had the higher amount of matrix polysaccharides for both turbulent and laminar flow-generated biofilms than single and binary turbulent and laminar flow-generated biofilms formed by the isolated strains (Fig. 2b). Matrix polysaccharides content of the isolated strains as single and binary biofilms is similar ($P > 0.1$) when comparing hydrodynamic similar biofilms. The matrix polysaccharides content comparison between the isolated strains biofilms and the type strain revealed a significant statistical difference ($P < 0.05$) for both turbulent and laminar conditions. In a biofilm control process, the barrier protection provided by the EPS matrix increase the resistance of biofilm-resident bacteria to environmental stress conditions (Simões *et al.* 2005a). When antimicrobial agents are applied in the control of biofilms, besides the physical hindrance of antimicrobial diffusion, the protective property of the EPS matrix could be also due to others factors such as absorption or catalytic destruction of the aggressive agent on the biofilm surface (Simões *et al.* 2003).

The physiological parameters analyzed (Figs. 1 and 2) play a significant role in a context of biofilm control using chemical agents (Simões, 2005). Comparing the effect of turbulent flow conditions on the studied physiology of the several different strain biofilms (Figs. 1 and 2), statistical similarity was detected for the single and binary biofilms when comparing the metabolic activity, mass and matrix proteins. Turbulent and laminar flow-generated biofilms formed by the type strain revealed a considerable

higher cellular density and amount of matrix polysaccharides than the biofilms formed by the isolated strains (single and binary), consequently, in a context of biofilm control by chemical agents, biofilms formed by the type strain represent, apparently, the worst situation.

Concerning the distinct properties of turbulent and laminar flow-generated biofilms, according to several authors (Stoodley *et al.* 1999; Vieira *et al.* 1993), they are mainly related with the cellular responses to the hydrodynamic stress and due to the passive transport of cells and nutrients by the flow through the biofilm. A cascade of parameters like mass transport, substrate concentrations, diffusion gradients, detachment-attachment mechanisms, relationships between different microorganisms, and flow rates arguably have significant influence on biofilm structure and behaviour.

Fig. 3 displays SEM microphotographs representative of the several fields observed in each biofilm-covered metal surface.

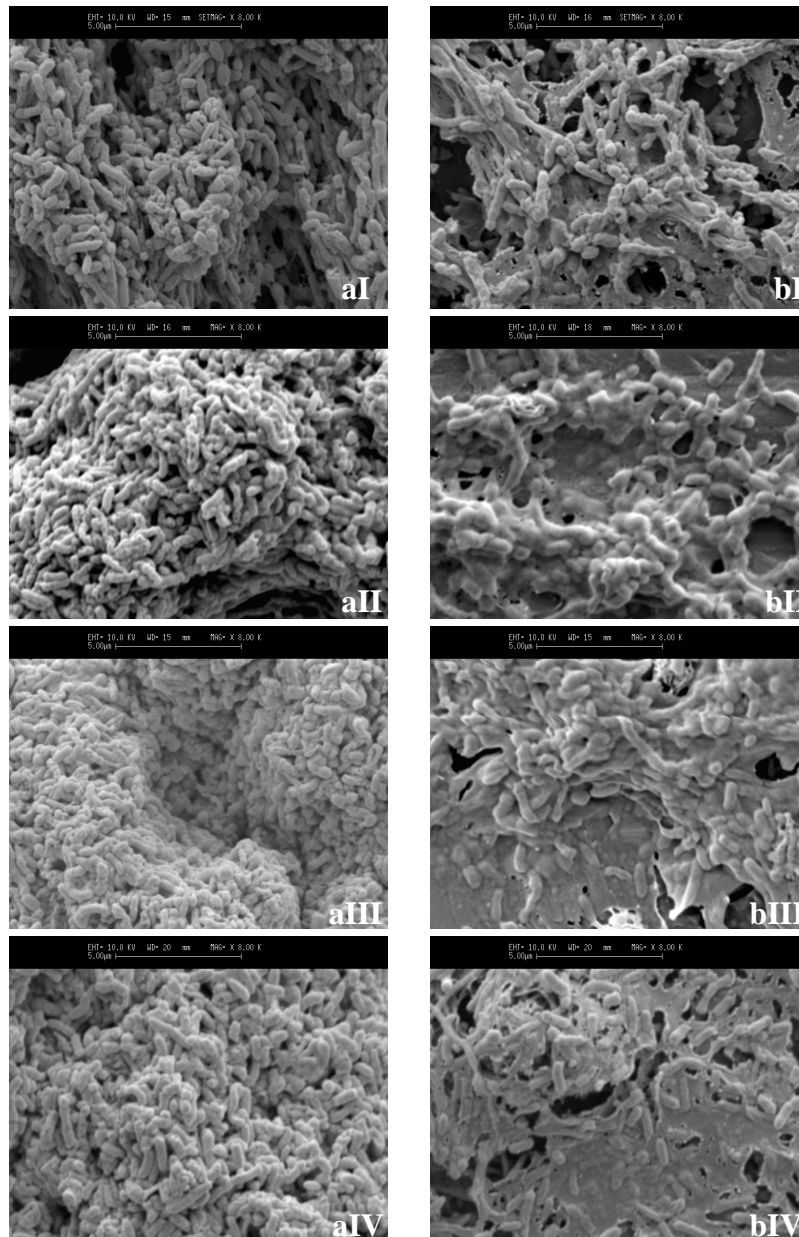


Fig. 3 SEM photomicrographs of a 7 d old biofilms formed under turbulent (a) and laminar (b) flow by *P. fluorescens* the type strain (I), D3-348 (II), D3-350 (III) and by the binary isolated strains (IV). X8000 magnification, bar=5 µm.

As observed in Fig. 3, biofilms grown under turbulent flow look very different from the ones grown under laminar flow. It is evident the existence of a higher amount of cells in the biofilms formed under turbulent flow as well as an almost inexistent biofilm matrix when compared with the laminar flow-generated biofilms. Therefore, the hydrodynamic conditions play an important role in the biofilm architecture being responsible for the differences obtained (Pereira *et al.* 2002). Additionally, some morphological differences are encountered when comparing the different strains and association (single or binary) for the same hydrodynamic condition. These differences can be, in part, associated with the different biofilm characteristics emphasized by Figs. 1 and 2.

Although the morphology of the biofilm may have been altered by the dehydration process, SEM results provide good comparative information and demonstrate the existence of heterogeneity within the biofilms (Fig. 3). This heterogeneity could be behind the reduced susceptibility of sessile microorganisms face to antimicrobial agents, which could lead to the existence of persistent microorganisms that are recalcitrant to further treatments (Simões *et al.* 2005a). Fig. 3 also reinforces that both turbulent and laminar flow-generated binary biofilms, did not evidence remarkable differentiation as a consequence of the interactions promoted by the two isolated strains. Previous studies using *Pseudomonas* spp. in binary species biofilms (Cowan *et al.* 2000) demonstrated the potential for commensal interactions in the presence of organic compounds. Other apparent protective effects found within microorganisms have been mentioned (Møller *et al.* 1998; Whiteley *et al.* 2001). The binary biofilms studied present characteristics (Figs. 1, 2 and 3) that seem to be an average of the values of each single biofilm, evidencing neutral interactions between the two isolated bacteria.

Conclusions

The data provided in this study emphasize that *P. fluorescens* biofilm formation under different hydrodynamic conditions trigger significant quantitative metabolic, morphological and biochemical changes, illustrating the importance of considering hydrodynamics in biofilm development and complements previous studies which have focused on physical aspects of structural and density differences. The results found for the type strain were comparable with the ones obtained with the isolated strains as single and binary biofilms, except for the cellular density and matrix polysaccharides content, highlighting the phenomenon of strain variation. Biofilms formed by the type strain represent, apparently, the worst situation in a context of control. Binary biofilms reveal an apparent coexistence of the isolated strains with neutral interactions.

Acknowledgments

The authors acknowledge the financial support provided by IBQF, and the Portuguese Foundation for Science and Technology (Project CHEMBIO - POCI/BIO/61872/2004 and Post-Doc Grant - Manuel Simões). We gratefully acknowledge Prof. Kathryn J. Boor (Department of Food Science, Cornell University, Ithaca, N.Y.) for providing the industrial isolates.

References

Cowan S. E., Gilbert E., Liepman D. and Keasling J. D. (2000). Commensal interactions in a dual-species biofilm exposed to binary organic compounds. *Appl. Environ. Microbiol.* **66**, 4481-4485.

- Dogan B. and Boor K. J. (2003). Genetic diversity and spoilage potential among *Pseudomonas* spp. isolated from fluid milk products and dairy processing plants. *Appl. Environ. Microbiol.* **69**, 130-138.
- Dubois M., Gilles K. A., Hamilton J. K., Rebers A. and Smith F. (1956). Colorimetric method for determination of sugars and related substances. *Anal. Chem.* **28**, 350-356.
- Frølund B., Palmgren R., Keiding A. and Nielsen P.H. (1996). Extraction of extracellular polymers from activated sludge using a cation exchange resin. *Water Res.* **30**, 1749-1758.
- Fux C. A., Shirtliff M., Stoodley P. and Costerton J. W. (2005). Can laboratory reference strains mirror “real-world” pathogenesis. *Trends Microbiol.* **13**, 58-63.
- Møller S., Steinberg C., Andersen J. B., Christensen B. B., Ramos J. L., Givskov M. and Molin S. (1998). *In situ* gene expression in binary-culture biofilms: evidence of metabolic interactions between community members. *Appl. Environ. Microbiol.* **64**, 721-732.
- Pereira M. O., Morin P., Vieira M. J. and Melo L. F. (2001). A versatile reactor for continuous monitoring of biofilm properties in laboratory and industrial conditions. *Lett. Appl. Microbiol.* **34**, 22-26.
- Pereira M. O. Kuehn M., Wuertz S., Neu T. and Melo L. (2002). Effect of flow regime on the architecture of a *Pseudomonas fluorescens* biofilm. *Biotech. Bioeng.* **78**, 164-171.
- Saby S., Sibille L., Mathiew J., Paquin L. and Block J. C. (1997). Influence of water chlorination on the counting of bacteria with DAPI (4, 6-diamino-2-phenylindole). *Appl. Environ. Microbiol.* **63**, 1564-1569.
- Simões M., Carvalho H., Pereira M. O. and Vieira M. J. (2003). Studies on the behaviour of *Pseudomonas fluorescens* biofilms after *ortho*-phthalaldehyde treatment. *Biofouling* **19**, 151-157.
- Simões M. (2005). Use of biocides and surfactants to control *Pseudomonas fluorescens* biofilms – role of the hydrodynamic conditions. PhD Thesis, University of Minho.
- Simões M., Pereira M. O. and Vieira M. J. (2005a). Effect of mechanical stress on biofilms challenged by different chemicals. *Water Res.* **39**, 5142-5152.
- Simões M., Pereira M. O. and Vieira, M. J. (2005b). Validation of respirometry as a short-term method to assess the efficacy of biocides. *Biofouling* **21**, 9-17.
- Standard methods for the examination of water and wastewater (1989). 17th edn, American Public Health Association/American Water Works Association/American Environment Federation, Washington DC, USA.
- Stoodley P., Boyle J. D., DeBeer D. and Lappin-Scott H. M. (1999). Evolving perspectives of biofilm structure. *Biofouling* **14**, 75-90.
- Vieira M. J., Melo L. and Pinheiro M. M. (1993). Biofilm formation: hydrodynamic effects on internal diffusion and structure. *Biofouling* **7**, 67-80.
- Whiteley, M., Ott, J.R., Weaver, E.A., and McLean, R.J. 2001. Effects of community composition and growth rate on aquifer biofilm bacteria and their susceptibility to betadine disinfection. *Environ Microbiol* **3**, 43-52.