



(11) **EP 1 549 147 B1**

(12) **EUROPEAN PATENT SPECIFICATION**

(45) Date of publication and mention of the grant of the patent:  
**23.02.2011 Bulletin 2011/08**

(51) Int Cl.:  
**A21D 2/26** <sup>(2006.01)</sup> **A21D 8/04** <sup>(2006.01)</sup>  
**C12N 9/24** <sup>(2006.01)</sup>

(21) Application number: **03794720.7**

(86) International application number:  
**PCT/BE2003/000152**

(22) Date of filing: **11.09.2003**

(87) International publication number:  
**WO 2004/023879 (25.03.2004 Gazette 2004/13)**

(54) **USE OF FAMILY 8 ENZYMES WITH XYLANOLYTIC ACTIVITY IN BAKING**

VERWENDUNG VON ENZYMEN DER FAMILIE 8 MIT XYLANOLYTISCHER WIRKSAMKEIT BEIM BACKEN

UTILISATION D'ENZYMES DE FAMILLE 8 POSSEDANT UNE ACTIVITE XYLANOLYTIQUE EN BOULANGERIE

(84) Designated Contracting States:  
**AT BE BG CH CY CZ DE DK EE ES FI FR GB GR HU IE IT LI LU MC NL PT RO SE SI SK TR**

(30) Priority: **11.09.2002 US 410345 P**

(43) Date of publication of application:  
**06.07.2005 Bulletin 2005/27**

(73) Proprietor: **Puratos Naamloze Vennootschap**  
**1702 Groot-Bijgaarden (BE)**

(72) Inventors:  
• **DUTRON, Agnès**  
**B-1080 BRUSSELS (BE)**  
• **GEORIS, Jacques**  
**B-6820 FLORENVILLE (BE)**  
• **GENOT, Bernard**  
**B-4530 VILLERS-LE-BOUILLET (BE)**  
• **DAUVRIN, Thierry**  
**B-4218 COUTHUIN (BE)**

- **COLLINS, Tony**  
**B-4031 ANGLEUR (BE)**
- **HOYOUX, Anne**  
**B-4130 TILFF (BE)**
- **FELLER, Georges**  
**B-4870 TROOZ (BE)**

(74) Representative: **Van Malderen, Joëlle et al**  
**pronovem - Office Van Malderen**  
**Avenue Josse Goffin 158**  
**1082 Bruxelles (BE)**

(56) References cited:  
**WO-A-01/70998** **WO-A-02/19828**  
**US-A1- 2003 059 496** **US-A1- 2003 082 779**

- **COLLINS ET. AL: "A Novel family 8 xylanase: functional and physico-chemical characterisation" J. BIOL. CHEM, vol. 277, no. 38, 8 May 2002 (2002-05-08) - 27 June 2002 (2002-06-27), pages 35133-35139, XP001156740 USA cited in the application**

Note: Within nine months of the publication of the mention of the grant of the European patent in the European Patent Bulletin, any person may give notice to the European Patent Office of opposition to that patent, in accordance with the Implementing Regulations. Notice of opposition shall not be deemed to have been filed until the opposition fee has been paid. (Art. 99(1) European Patent Convention).

**EP 1 549 147 B1**

**Description****Field of the invention**

5 [0001] The present invention concerns a method and a composition for the improvement of bakery products that comprise at least one enzyme with xylanolytic activity from the glycoside hydrolase family 8. In an embodiment of the invention said enzyme with xylanolytic activity is further characterized by the fact that there is an inversion of configuration during hydrolysis. In specific embodiments of the invention said enzyme with xylanolytic activity is a psychrophilic xylanase from *Pseudoalteromonas haloplanktis* or a mesophilic xylanase from *Bacillus halodurans*.

**Background of the invention**

15 [0002] Xylans are heteropolysaccharides that form the major part of the hemicellulose present in the plant biomass. The backbone of these polysaccharides is a chain of P 1-4 linked xylopyranosyl residues. Many different side groups could bind to these residues like acetyl, arabinosyl and glucuronosyl residues. Phenolic compounds such as ferulic or hydroxycinnamic acids are also involved through ester binding in the cross linking of the xylan chains or in the linkage between xylan and lignin chains for example.

20 [0003] Endoxylanases (or endo- $\beta$ -1,4-xylanases) hydrolyse specifically the backbone of the hemicellulose. In some cases, the side groups may mask the main chain by steric hindrance. Different xylanases activities have been described. Their specificity towards their substrate varies from one to each other. Some are more active on insoluble arabinoxylans. The length of the oligomers produced also depends on the type of xylanase considered.

25 [0004] Glycoside hydrolases (formerly known as cellulase family D) have been classified in 91 families (<http://afmb.cnrs-mrs.fr/CAZY/>) based on sequence homologies, structural and mechanistic features. Because the fold of proteins is better conserved than their sequences, some of the families can be grouped in 'clans' (Henrissat B. 1991, Biochem. J. Vol. 280, p 309). Endo-beta-1,4-xylanases are generally classified in families 10 (formerly family F) and 11 (formerly family G) and are found to frequently have an inverse relationship between their pI and molecular weight. The family 10 xylanases (EXs10) are larger, more complex, while the family 11 xylanases (EXs11) are smaller. Moreover a significant difference in the structure and the catalytic properties of both families exists. EXs10 present an ( $\alpha/\beta$ )<sub>8</sub> barrel fold, have about 40% of  $\alpha$ -helix structures and belong to clan GH-A (Dominguez et al., 1995, Nat. Struct. Biol. Vol. 2, p569) while EXs11 exhibit a  $\beta$ -jelly fold conformation, have about 3-5% of  $\alpha$ -helix structures and belong to clan GH-C (Törrönen et al., 1994, EMBO J. Vol. 13, p2498). EXs10 have a smaller substrate binding site and a lower substrate specificity, have frequently endoglucanase activity and produce smaller oligosaccharides compared to EXs11, which have a higher affinity for unsubstituted xylan (Biely et al., 1997, J. Biotechnol. Vol. 57, p151). All xylanases of both families characterized to date retain the anomeric configuration of the glycosidic oxygen following hydrolysis in which two glutamates function as the catalytic residues (Jeffries, 1997, Curr. Opin. Biotechnol. Vol. 7, p337).

35 [0005] Xylanases are used in various industrial areas such as the pulp, paper, feed and bakery industries. Other applications lie in the juice and beer sectors. Xylanases could also be used in the wheat separation process. The observed technological effects are, among others, improved bleachability of the pulp, decreased viscosity of the feed or changes in dough characteristics.

40 [0006] The use of xylanases (also called hemicellulases or pentosanases) in baking is well known since a number of years. These dough-conditioning enzymes can improve the dough machinability and stability as well as the oven-spring and the crumb structure. Other effects of the enzymes are a larger loaf volume and a softer crumb.

45 [0007] The mechanism of action of xylanases in bread preparation is still not clearly elucidated. There are about 3 to 4 % pentosans in wheat flour. These pentosans can absorb large amounts of water (up to 30%). This water absorption contributes to the properties of the dough as well as to the quality of the final product. Partial hydrolysis of pentosans by pentosanases into water soluble short chain oligosaccharides increases the water binding capacity. There is also a strong interaction of the pentosans with the gluten fraction of the flour to form a network. Pentosanases may help to relax this strong and rigid network and therefore allowing the carbon dioxide formed by the yeast to better expand the dough.

50 [0008] Many types of hemicellulase preparations have been used as baking active-ingredients and are commercially available. They are produced by microbial fermentation using various microorganisms as enzyme sources. Some of these enzymes are also produced by genetically modified microorganisms. All documented uses of xylanases having a positive effect on the specific volume of baked goods, relate to xylanases belonging to glycoside hydrolases Family 10 or Family 11 as defined previously.

55 [0009] Examples of xylanases for baking are the xylanases from *Bacillus subtilis* and *Aspergillus niger*.

[0010] There is a variety of methods to evaluate the xylanase activity in an enzyme preparation. Examples of such methods of xylanase activity determination are the measure of the release of reducing sugar from xylan (Miller G.L. 1959, Anal. Chem. Vol. 31, p426) or the measure of the release of coloured compounds from modified substrates (for

examples AzoWAX or Xylazyme AX from Megazyme). However no direct correlation could be found between the xylanolytic activity found in the various enzyme preparations and the effect in baking. Dose-related results can be observed to a certain extent for a single enzyme but the same dosage for two xylanases of different origins does not give the same result in the dough or in the bread. Several reasons could explain this: the differences in substrate specificity, the differences in temperature and pH optimum,...

**[0011]** It is of great interest to develop new enzyme preparations, such as bread improver compositions or agents, with new or improved properties. One of these properties could be that the xylanase fraction is as small as possible (in terms of weight of enzymes needed to obtain a particular result in baking).

**[0012]** A xylanase from the Antarctic bacterium *Pseudoalteromonas haloplanktis* has been recently described (Collins, T. et al. 2002. A novel Family 8 xylanase: functional and physico-chemical characterisation. J. Biol. Chem. Vol. 277-38, p35133; Collins, T. et al. 2003, Activity, stability and flexibility in glycosidases adapted to extreme thermal environments. J. Mol. Biol. Vol. 328, p419; Van Petegem F. et al., 2002. Crystallization and preliminary X-ray analysis of a xylanase from the psychrophile *Pseudoalteromonas haloplanktis*. Acta Crystallogr D Biol Crystallogr. Vol. 58(Pt 9), p1494-6). This enzyme is a typical psychrophilic enzyme and presents a high catalytic activity at low temperature. It is not homologous to family 10 or 11 xylanases but has 20 to 30% identity with glycoside hydrolases family 8 (formerly family D) members, a family that comprises mainly endoglucanases but also lichenases and chitosanases. Furthermore, a FingerPRINTScan against PRINTS using the InterPro Scan search program (Zdobnov and Apweiler, 2001, Bioinformatics Vol. 17, p847) indicated that the isolated sequence contained the glycosyl hydrolases family 8 fingerprint and family 8 residues that are strictly conserved in 20 family 8 enzymes analyzed.

**[0013]** Conversely to EXs10 and Exs11, this family 8 xylanase (EXs8) has both high pH and high molecular weight. Structural and catalytic properties are different to those of both EXs10 and EXs11. EXs8 present an ( $\alpha/\alpha$ )6 barrel fold with 13  $\alpha$ -helices and 13  $\beta$ -strands and belong to clan GH-M (Van Petegem et al., 2003, The structure of a cold-adapted family 8 xylanase at 1.3 Å resolution. Structural adaptations to cold and investigation of the active site. J. Biol. Chem. Vol. 278(9), p7531-9). These enzymes have no endoglucanase, chitosanase or licheninase activity and appear to be functionally similar to EXs11, being more active on long chain xylo-oligosaccharides.

**[0014]** In contrast to other known EXs10 and EXs11 that retain the configuration, family 8 glyco-hydrolases (Fierobe et al., 1993. Eur. J. Biochem. Vol. 217, p557; <http://afmb.cnrs-mrs.fr/CAZY/>) tend to hydrolyse the substrate with inversion of the anomeric configuration of the glycosidic oxygen following hydrolysis in which one glutamate and one aspartate function as the catalytic residues. This has been shown for example for the psychrophilic xylanase from *Pseudoalteromonas haloplanktis* (Van Petegem et al., 2003, J. Biol. Chem., Vol. 278(9), p7531-9; Collins, T. et al. 2002. A novel family 8 xylanase: functional and physico-chemical characterization. J. Biol. Chem. Vol. 277(38), p35133). Other xylanases belonging to the glycoside hydrolases family 8 have been already described (Yoon, K-H., 1998, Molecular cloning of a *Bacillus* sp. KK-1 xylanase gene and characterization of the gene product. Biochem. Mol. Biol. International. 45(2), p. 337; *Bacillus halodurans* C-125 xylanase Y GenBank/GenPept™ accession code BAB05824). These xylanases show sequence homologies between them as well as with the *Pseudoalteromonas haloplanktis* xylanase as described by Collins et al (2002, see above).

**[0015]** The list of the enzymes belonging to the glycoside hydrolases family 8 is regularly updated (<http://afmb.cnrs-mrs.fr/CAZY/>).

#### **Aims of the invention**

**[0016]** The present invention aims to provide novel enzyme preparations such as bread improver compositions.

**[0017]** The present invention further aims to provide a new method for obtaining improved bakery products by using such enzyme preparations.

#### **Summary of the invention**

**[0018]** It was surprisingly found that an enzyme with xylanolytic activity and belonging to glycoside hydrolases family 8 had a positive effect on the dough properties or on the baked product properties when it was added during the mixing of the dough.

**[0019]** It was also surprisingly found that an enzyme with xylanase activity and hydrolysing with inversion of the anomeric configuration had a positive effect on the dough properties or on the baked products properties when it was added during the mixing of the dough.

**[0020]** It was further surprisingly found that the use of enzymes as described above increases the volume of the loaf.

**[0021]** It was also found that the use of some such enzymes with xylanolytic activity from the glycoside hydrolases family 8, the EXs8, make it possible to use less enzyme for the same effect on the dough or bread properties as compared to presently known xylanases.

**[0022]** A specific embodiment of this invention concerns enzymes with xylanolytic activity from the glycoside hydrolases

family 8 and their use in the baking industry as described above.

[0023] A particular embodiment of the invention concerns a psychrophilic family 8 xylanase from *Pseudoalteromonas haloplanktis* and a mesophilic family 8 xylanase Y from *Bacillus halodurans*. These enzymes are xylanases that hydrolyze with inversion of the anomeric configuration.

[0024] Preferred xylanases are those obtained from the strains *Pseudoalteromonas haloplanktis* TAH3a, and *Bacillus halodurans* C-125 or those obtained from the corresponding gene expressed in a suitable host.

[0025] Preferably, the bread improving composition comprising at least one enzyme of the invention is added during the mixing of the dough.

[0026] Said bread improving composition may further comprise other bread-improving agents selected from the list consisting of other enzymes, emulsifiers, oxidants, milk powder, fats, sugars, amino acids, salts, proteins (gluten, cellulose binding sites) or a mixture thereof.

[0027] Said other enzymes may be selected from the list consisting of alpha-amylases, beta-amylases, maltogenic amylases, other xylanases, proteases, glucose oxidase, oxido-reductases, glucanases, cellulases, transglutaminases, isomerases, lipases, phospholipases, pectinases or a mixture thereof.

[0028] Said alpha-amylase preferably is obtained from *Aspergillus oryzae*.

[0029] The enzymes with xylanolytic activity according to the invention may be used in the form of a cell extract, a cell-free extract or as a purified protein in said bread improving composition.

[0030] The enzymes of the invention may be mixed with other ingredients and be used in the form of a dry powder or a granulate, in particular a non-dusting granulate, or in the form of a liquid, preferably with one or more stabilizer(s) such as polyols, sugars, organic acids or sugar alcohols.

[0031] Another aspect of the invention concerns baked products obtained or obtainable when using an enzyme of the invention.

[0032] A further aspect of the invention concerns bread improving compositions comprising at least one of the enzymes of the invention.

[0033] A still further aspect of the invention concerns a method for increasing the loaf volume of a baked product, comprising the step of adding during the mixing of the dough of said baked product, a sufficient amount of an enzyme with xylanolytic activity selected from the group consisting of glycoside hydrolase family 8 xylanases, possibly enzymes with xylanolytic activity that hydrolyze with inversion of configuration. It is possible to use any combination or mixture of the above described enzymes in a dough or bakery product for any of the above described purposes.

#### Brief description of the drawings

[0034] The Figure 1 represents the effect of increasing amounts of *Pseudoalteromonas haloplanktis* xylanase TAH3a on the volume of Belgium hard rolls.

[0035] The Figure 2 shows a SDS-polyacrylamide gel electrophoresis of various xylanase samples (amount of enzyme loaded proportional to the amount used in baking, same proportionality factor for all enzymes).

Lane 1: molecular weight markers.

Lanes 2-5: amounts of *Pseudoalteromonas haloplanktis* xylanase (2-3) and *Bacillus subtilis* xylanase (4-5) needed to treat respectively 0.333 (2, 4) and 0.166 kg (3, 5) of wheat flour.

[0036] The figures 3A and B represent the nucleotide sequence of the xylanase gene of *Pseudoalteromonas haloplanktis* (A) and the corresponding xylanase (B).

[0037] The figure 4 represents the xylanase Y from *Bacillus halodurans* strain C-125.

[0038] The invention will be described in further details in the following examples and embodiments by reference to the enclosed drawings. Particular embodiments and examples are not in any way intended to limit the scope of the invention as claimed.

#### Detailed description of the invention

[0039] The present invention in particular relates to the use of family 8 enzymes with xylanolytic activity in baking to improve among others the loaf volume. Said enzymes may have other activities, but the xylanolytic activity should be such that the enzyme is suited for the purposes of the present invention.

#### A. Preparation of some preferred enzymes according to the invention

[0040] Enzymes with xylanolytic activity from the glycosyl hydrolases family 8 can be obtained from various sources (see e.g. <http://afmb.cnrs-mrs.fr/CAZY/> for an overview). Some of the enzymes have been described in the scientific

literature and may therefore be obtained using the techniques described in the corresponding publications. Below, the preparation of some preferred enzymes according to the invention is described in more details.

### A.1. Xylanase from *Pseudoalteromonas haloplanktis* TAH3a

[0041] The xylanase from *Pseudoalteromonas haloplanktis* TAH3a has been described in Collins T. et al. (2002. A novel Family 8 xylanase: functional and physico-chemical characterisation. J. Biol. Chem. Vol. 277(38), p35133). Collins et al. describes the preparation by liquid culture of a recombinant strain of *Escherichia coli* carrying the *Pseudoalteromonas haloplanktis* TAH3a xylanase gene cloned in an expression plasmid.

[0042] The nucleotide sequence of the xylanase gene of *Pseudoalteromonas haloplanktis* is available, as well as is available the corresponding amino acid sequence (EMBL Accession number AJ427921, sequence enclosed by reference thereto, Figures 3A-B, SEQ ID NOs: 6-7). The enzyme has a molecular weight of 46000 Da, an isoelectric point of approximately 9.5, an optimum temperature of 35°C and an optimum pH between 5.3 and 8. It is a true xylanase with the main reaction products of xylan hydrolysis being xylotriose and xyloetraose after prolonged incubation.

[0043] Crude or purified preparation of this xylanase can be obtained by first cultivating either the wild-type of the recombinant strain in a medium suitable to express the enzyme eventually followed by one or several steps of purification such as but not limited to centrifugation, cell disruption, microfiltration, ultrafiltration, precipitation, liquid chromatography, freeze-drying,...

### A.2. Xylanase Y from *Bacillus halodurans* C-125

[0044] The sequence of the family 8 xylanase Y from *Bacillus halodurans* strain C-125 (ATCCCBAA-125) is available as GenBank/GenPept™ accession code BAB05824 (sequence enclosed by reference thereto, Figure 4, SEQ ID NO: 8). The corresponding DNA sequence is available as part as the complete genome sequence of *Bacillus halodurans* strain C-125 (accession code AP001514, sequence enclosed by reference thereto).

[0045] The xylanase from *Bacillus halodurans* C-125 may be obtained by first culturing the strain in/on a medium suitable for expressing the xylanase followed by one or several steps of purification such as but not limited to centrifugation, cell disruption, microfiltration, ultrafiltration, precipitation, liquid chromatography, freeze-drying,...

[0046] Alternatively, the xylanase from *Bacillus halodurans* C-125 may be obtained by first cloning the corresponding gene using well known techniques such as PCR amplification, ligation to a vector and transformation in a microbial host. After this step, the xylanase may be advantageously expressed in a suitable host by placing the gene under the control of appropriate control sequences such as but not restricted to promoter and terminator and inserting this DNA construct in a cell that would permit the expression of the gene.

[0047] In a specific embodiment of the present invention the xylanase gene will be overexpressed in said cell.

[0048] The present invention is, however, not restricted to the above enzymes but extends to other enzymes with xylanolytic activity belonging to the glycosidase hydrolases family 8. These enzymes are produced by microbial and non-microbial living cells such as but not restricted to plants or animals. The enzymes may be obtained directly from living cell cultures and/or samples, or may be produced by recombinant strains or host cells. The gene encoding the enzyme of interest may be a synthetic gene.

[0049] By "recombinant strain" or by "recombinant host cell" is meant a strain having incorporated the nucleotide sequence of said enzymes with xylanolytic activity belonging to the glycosidase hydrolases family 8.

[0050] Advantageously, recombinant host cells are selected from the group consisting of the microbial world, preferably bacteria or fungi, including yeast and more preferably *Bacillus*.

[0051] Preferably, said recombinant strain is capable of overexpressing said nucleotide sequence and allows advantageously a high production of the said xylanase.

[0052] The enzymes with xylanolytic activity produced according to the present invention can be used directly for the purpose of the said present invention and/or may undergo one or more purification or (further) culturing steps. In a particular embodiment of the invention, the enzymes may be used in pure form.

[0053] Possible preparation methods for enzymes according to the invention include among others preparation or purification from cultures of microorganisms, recombinant or not, in shake flasks or in fermentors, preparation or purification from immobilized cultures, extraction and/or purification from living cells (plants,...),

### B. Application of the enzyme

[0054] The enzyme with xylanolytic activity according to the present invention, purified or not purified, is particularly suited as bread-improving agent. Bread-improving agents are products that could improve or increase texture, flavour, anti-staling effects, softness, crumb softness upon storage, freshness, dough machinability, volume of a final product. Preferably, said enzyme with xylanolytic activity improves the dough handling and/or increases the specific volume of

the final baked product. "Baked product" intends to include any product prepared from dough, in particular a yeast raised baked product. Dough is obtained from any type of flour or meal (e.g. based on wheat, rye, barley, oat, or maize). Preferably, dough is prepared with wheat or with mixes including wheat.

[0055] It is one of the aspect of the present invention to show that the enzymes with xylanolytic activity belonging to the family 8 could advantageously be used in a bread improver formula.

[0056] In a further embodiment of the present invention, it is shown that an enzyme with xylanolytic activity belonging to glycoside hydrolases family 8 increases the loaf volume of a baked product.

[0057] In a further embodiment of the present invention, it is shown that the amount of a family 8 enzyme with xylanolytic activity needed to obtain a particular result in baking is exceptionally lower than the amount generally used when working with commercially available enzymes.

[0058] In a further aspect, the present invention relates to the additive effect of said enzyme with xylanolytic activity with other enzymes, in particular with an alpha-amylase, preferably an alpha-amylase from *Aspergillus oryzae*. Said enzyme with xylanolytic activity may be used in combination with other bread-improving agents like but not limited to enzymes, emulsifiers, oxidants, milk powder, fats, sugars, amino acids, salts, proteins (gluten, cellulose binding site), such improving agents being well known to persons skilled in the art. Examples of enzymes are but not restricted to alpha-amylases, beta-amylases, maltogenic amylases, xylanases, proteases, glucose oxidase, oxido-reductases, glucanases, cellulases, transglutaminases, isomerases, lipases, phospholipases, pectinases, etc.

[0059] The enzyme with xylanolytic activity according to the present invention may be used under several forms. Cells expressing the enzyme, such as yeast, fungi, Archea bacteria or bacteria, may be used directly in the process. Said enzyme may be used as a cell extract, a cell-free extract (i.e. portions of the host cell that has been submitted to one or more disruption, centrifugation and/or extraction steps) or as a purified protein. Any of the above-described forms may be used in combination with another enzyme under any of the above-described forms. Said cells, cell extracts, cell-free extracts or enzymes may be mixed with different ingredients, e.g. in the form of a dry powder or a granulate, in particular a non-dusting granulate, in a form of a liquid, for example with stabilisers such as polyols, sugars, organic acids, sugar alcohols according to established methods.

## Examples

### Example 1: Preparation of the xylanase of *Pseudoalteromonas haloplanktis* TAH3a

[0060] The xylanase from *Pseudoalteromonas haloplanktis* was obtained as described (Collins *et al*, 2002, see above) from a liquid culture of a recombinant strain of *Escherichia coli* transformed with a DNA vector containing the corresponding gene.

### Example 2: Preparation of the xylanase from *Bacillus halodurans* C-125

#### ***Bacterial strain and culture conditions***

[0061] *Bacillus halodurans* C-125 (ATCC BAA-125) was cultivated in Alkaline Bacillus medium (10g/l glucose, 5g/l yeast extract (Difco), 10g/l Bacto Tryptone (Difco), 1g/l K<sub>2</sub>HPO<sub>4</sub>, 0.2g/l MgSO<sub>4</sub>, 10g/l Na<sub>2</sub>CO<sub>3</sub>) supplemented with 10g/l birchwood xylan (Sigma) for 72 hours at 37°C. After centrifugation for 1h at 18000g and 4°C the supernatant was concentrated by precipitation with 80% ammonium sulphate and resuspended in 20mM MOPS at pH 8.0. This fraction represents the crude extract fraction that will be used for the baking trials.

#### ***Cloning and overexpression of the xylanase Y gene***

[0062] Genomic DNA was extracted and purified from 16 hour cultures, cultivated at 37°C in the modified Alkaline Bacillus medium described above, with the Wizard® Genomic DNA Purification kit (Promega). Based on the published sequence (GenBank/GenPept™ accession AP001514) the entire xylanase Y gene was PCR-amplified using VENT polymerase (Biolabs Inc, Beverly, MA, USA) with the sense primer

5'-GGGCATATGAAGAAAACGACAGAAGG TG-3', SEQ ID NO: 1  
containing an Nde I site (underlined)

and with the antisense primer

5'-GGCTCGAGCTAG TGTTCTCTTCTTG-3', SEQ ID NO: 2

containing an Xho I site (underlined) and the stop codon (in italics).

[0063] After 3 min initial denaturation at 95°C, 25 cycles of amplification were performed using a Progene apparatus

## EP 1 549 147 B1

(Techne Cambridge, UK). Each cycle included denaturation at 95°C for 1 min, hybridization at 52°C for 30 sec, and elongation at 72°C for 1.5 min.

**[0064]** The PCR product was cloned into a PCRScript Amp SK(+) vector (Stratagene), using the procedure recommended by the supplier, and used to transform Epicurian Coli XL10-Gold® Kan ultracompetent cells. Blue-white selection allowed selection of white colonies carrying the PCR-fragment. Purified plasmid preparation (Nucleospin plasmid, Macherey-Nagel) was sequenced on an ALF DNA sequencer (Pharmacia Biotech). Sequencing of the inserted fragment was carried out using the universal primers T7 and RP as well as the following primers:

5'-GTGCGGACTGAAGGAATGTC-3', SEQ ID NO: 3  
 5'-GTATGGTCCATCAACAGAGG-3', SEQ ID NO: 4  
 5'-GATGCGACTAAAACTCCTGG-3'. SEQ ID NO: 5

**[0065]** The sequence obtained was identical to the published sequence that could be retrieved from GenBank/genPept™ with the accession number AP001514.

**[0066]** The xylanase Y gene hence cloned in the PCRScript Amp SK(+) was then excised with *Nde* I and *Xho* I and ligated into the pET 22b(+) cloning vector (Novagen). The resulting recombinant plasmid was transformed to *E. coli* BL21 (DE3) cells (Stratagene).

### Production of the recombinant family 8 xylanase Y from *Bacillus halodurans* C-125.

**[0067]** Fifteen ml of a five hour preculture (37°C) of the *E. coli* BL21 (DE3) cells carrying the xylanase gene was centrifuged at 10000 g for 1 minute and the pellet was resuspended in 900 ml Terrific broth (12g/l Bacto tryptone (Difco), 24g/l yeast extract (Difco), 4ml/l glycerol, 12.54g/l K<sub>2</sub>HPO<sub>4</sub>, 2.31g/l KH<sub>2</sub>PO<sub>4</sub>) containing 200µg/ml ampicillin in a 3 liter shake flask. The culture was incubated at 37°C and 250 rpm until an absorbance at 550nm of between 3 - 4 was reached whereupon the expression of the enzyme was induced with 1mM isopropyl-1-thio-β-galactopyranoside. Following 15 hours further incubation at 37°C the cells were harvested by centrifugation at 18000 g for 30 minutes at 4°C, resuspended in 50mM BICINE containing 10mM NaCl, disrupted in a prechilled cell disrupter (Constant Systems Ltd., Warwick, UK) at 28Kpsi and centrifuged at 40,000 g for 30 minutes.

### Production of the recombinant *Bacillus halodurans* C-125 family 8 xylanase.

**[0068]** The cells of a five hour preculture (37°C) of the *E. coli* BL21(DE3) cells carrying the xylanase gene were collected by centrifugation at 10,000 g for 1 minute and used to inoculate five liters (15ml preculture per liter of culture) of Terrific broth (12g/l Bacto tryptone (Difco), 24g/l yeast extract (Difco), 4ml/l glycerol, 12.54g/l K<sub>2</sub>HPO<sub>4</sub>, 2.31g/l KH<sub>2</sub>PO<sub>4</sub>) containing 200µg/ml ampicillin. The culture was incubated at 37°C and 250 rpm until an absorbance at 550nm of between 3 - 4 was reached whereupon the expression of the enzyme was induced with 1mM isopropyl-1-thio-β-galactopyranoside. Following 4 hours further incubation at 37°C the cells were harvested by centrifugation at 18000 g for 20 minutes at 4°C, resuspended in 20mM MOPS (Sigma), disrupted in a prechilled cell disrupter (Constant Systems Ltd.) at 28Kpsi and centrifuged at 40,000 g for 30 minutes. Chromosomal DNA was removed by treatment with 0.2% protamine sulfate (Calbiochem) and centrifugation at 40,000 g for 30 minutes. 25 units of benzonase (Merck, Darmstadt, Germany) was then added and the solution used in baking trials.

### Example 3: Effect of the xylanase of *Pseudoalteromonas haloplanktis* TAH3a in baking of Belgian hard rolls

**[0069]** Baking trials were performed to demonstrate the positive effect of *Pseudoalteromonas haloplanktis* TAH3a xylanase in baking. The positive effect was evaluated by the increase in bread volume compared to a reference not containing this enzyme.

**[0070]** The xylanase was tested in Belgian hard rolls that are produced on a large scale every day in Belgium. The procedure described is well known to the craft baker and it is obvious to one skilled in the art that the same results may be obtained by using equipment from other suppliers.

**[0071]** The ingredients used are listed in the table 1 below:

**Table 1**

Ingredients (g)	RECIPE 1	RECIPE 2	RECIPE 3	RECIPE 4	RECIPE 5
Flour (Surbi -Molens van - Deinze)	1500	1500	1500	1500	1500
Water	915	915	915	915	915

## EP 1 549 147 B1

(continued)

Ingredients (g)	RECIPE 1	RECIPE 2	RECIPE 3	RECIPE 4	RECIPE 5
Fresh yeast (Bruggeman-Belgium)	90	90	90	90	90
Sodium chloride	30	30	30	30	30
Multec Data HP (Beldem-Belgium) 20	3.9	3.9	3.9	3.9	3.9
Ascorbic acid	0.12	0.12	0.12	0.12	0.12
Xylanase <i>Pseudoalter. Haloplanktis</i> (units(1)/100kg flour)	0	25	50	100	200
(1) : One unit of <i>Pseudoalteromonas haloplanktis</i> xylanase is defined as the amount of enzyme needed to release 1 $\mu$ mole of reducing sugar (expressed as xylose) from birchwood xylan at 30°C and pH 4.5 (Nelson-Somogyi method)					

**[0072]** The ingredients were mixed for 2 min at low and 8 min at high speed in a Diosna SP24 mixer. The final dough temperature as well as the resting and proofing temperatures were 25°C. After resting for 15 min at 25°C, the dough was reworked manually and rested for another 10 min. Afterwards, 2 kg dough pieces were made up and proofed for 10 min. The 2-kg dough pieces were divided and made up using the Eberhardt Optimat. 66 gr. round dough pieces were obtained. After another 5 min resting time, the dough pieces were cut by pressing and submitted to a final proofing stage for 70 min. The dough pieces were baked at 230°C in a MIWE Condo™ oven with steam (Michael Wenz-Arnstein-Germany). The volume of 6 rolls was measured using the commonly used rapeseed displacement method.

**[0073]** The results are presented on the table 2 below:

**Table 2**

Xylanase units	Rolls volume (ml)
0	2325
25	2675
50	2875
100	2950
200	3100

**[0074]** A graphical representation of the effect of the xylanase is shown on figure 1.

**[0075]** These results show that the xylanase of *Pseudoalteromonas haloplanktis* has a positive effect on the volume of bread.

#### **Example 4: Comparison of xylanase amounts used in baking**

**[0076]** The relative amount of xylanases needed to obtain the same effect on the volume in the Belgian hard rolls assay described in Example 3 has been compared by SDS-polyacrylamide gel electrophoresis.

**[0077]** The xylanases tested and their respective usage levels in baking were the following:

- the xylanase from *Pseudoalteromonas haloplanktis* TAH3a (30 *P. Haloplanktis* units/100 kg flour)
- the xylanase from *Bacillus subtilis* (Belase B210 (BELDEM S.A., Belgium) - 3 g/100 kg flour).

**[0078]** Amounts of enzyme corresponding to the quantity needed to treat 0.333 kg and 0.166 kg of flour, and resulting in the same volume increase, were loaded on a 12% Tris-HCl precast gel for SDS-polyacrylamide electrophoresis "Ready Gel" (BIO-RAD, Hercules, CA, USA) and run in a "Mini Protean II" (BIO-RAD) apparatus according to the procedure of the manufacturer. Proteins were stained with Coomassie blue using standard procedure.

**[0079]** A picture of the stained gel is shown on figure 2.

**[0080]** It can be concluded from this picture that the amount of xylanase from *Pseudoalteromonas haloplanktis* TAH3a needed in baking is significantly lower compared to the other.



## EP 1 549 147 B1

### **Example 5: Effect of the xylanase of *Pseudoalteromonas haloplanktis* TAH3a in Argentinian breads**

**[0081]** Baking trials were performed to demonstrate the positive effect of a family 8 xylanases in baking in another recipe than the one used for example 3, such as for instance in Argentinian breads. The positive effect was evaluated by the increase in bread volume compared to a reference not containing the enzyme and by the width of the cut on the surface of the bread.

**[0082]** The enzymes of the invention were tested in Argentinian breads that are typical long bread which need long time proofing (17 hours at 20°C). The procedure described is well known to the craft baker and it is obvious to one skilled in the art that the same results may be obtained by using equipment from other suppliers.

**[0083]** The ingredients used are listed in the table 3 below:

**Table 3**

Ingredients (g)	RECIPE 1	RECIPE 2	RECIPE 3	RECIPE 4
Flour (Surbi - Molens van Deinze - Belgium)	1500	1500	1500	1500
Water	810	810	810	810
Fresh yeast (Bruggeman-Belgium)	5.25	5.25	5.25	5.25
Sodium chloride	30	30	30	30
Standard Improve r (1) (Puratos- Belgium)	22.5	22.5	22.5	22.5
Bel'ase B2100 (Beldem - Belgium) (210 units/g)	0	0.15	0	0
Purified Xylanase of <i>Pseudoalteromonas. haloplanktis</i> TAH3a (units(2)/100kg flour)	0	0	25	50
(1) The standard improver used contains: Fungal alpha amylase (Fungamyl 75.000, Novozymes) 1g/100kg flour, vitamin C 10g, Azodicarbonamide 2g/100 kg flour. This is an example of a standard improver. Absolute and relative amounts of additives can vary according to local adaptation to wheat flour and process (2) : One unit of xylanase is defined as the amount of enzyme needed to release 1 μmole of reducing sugar (expressed as xylose) from birchwood xylan at 30°C and pH 4.5 (Nelson-Somogyi method)				

**[0084]** The ingredients were mixed for 2 min at low and 7 min at high speed in a Diosna SP24 mixer. The final dough temperature during the resting was 25°C while it was 20°C during proofing. After resting for 20 min at 25°C, the dough was reworked manually and rested for 17 hours at 20°C during proofing. Afterwards, 2 kg dough pieces were made up and proofed for 10 min. The 0.35-kg dough pieces were divided and made up using the Bertrand R8/L8 (+/-30 cm) and submitted to a final proofing stage for 17 hours. The dough pieces were baked at 210°C for 30 min in a MIWE Condo™ oven with steam (Michael Wenz-Arnstein-Germany). The volume of Argentinian breads was measured using the commonly used rapeseed displacement method.

**[0085]** The results are presented on the table 4 below:

**Table 4**

Recipe	Sample	Xylanase units	Bread volume (ml)	Width of cut (mm)
1		0	1675	19
2	Bel'ase B210	2100	1900	27
3	TAH3a	25	1900	34
4	TAH3a	50	1925	30

**[0086]** These results show that the family 8 xylanase has a positive effect on bread making with long time proofing at lower temperature (i.e. 20°C). The amount of the commercial enzyme (Bel'ase B210, see above) used here is 3-fold higher than the optimal dose required as described in example 3 for Belgian hard rolls, while the amount of family 8 xylanase needed remained unchanged. There exists also a difference between the enzyme concentration needed to optimize the width of the cut and the one needed for an optimal volume increase.

**Example 6: The effect of various enzymes of the invention versus other enzymes in baking**

**[0087]** Baking trials were performed to demonstrate the positive effect of various enzymes with xylanolytic activity belonging to the glycoside hydrolases family 8 in baking. The positive effect was evaluated by the increase in bread volume compared to a reference not containing these enzymes as well as to a commercial enzyme preparation (Bel'ase B210, see above).

**[0088]** The xylanase from *Pseudoalteromonas haloplanktis* TAH3a was prepared and purified as described in example 1. The xylanase Y from *Bacillus halodurans* C-125 was prepared from a recombinant *Escherichia coli* strain as described in example 2.

**[0089]** The method used to evaluate the performances of the two enzymes was a mini baking test consisting of preparing dough with 100g of flour.

**[0090]** The procedure described is well known to one skilled in the art and it is obvious that the same results may be obtained by using equipment from other suppliers.

**[0091]** The ingredients used are listed in the table 5 below:

**Table 5**

Ingredients (g)	RECIPE 1	RECIPE 2	RECIPE 3	RECIPE 4	RECIPE 5	RECIPE 6	RECIPE 7
Flour (Surbi -Molens van Deinze)	100	100	100	100	100	100	100
Water	57	57	57	57	57	57	57
Fresh yeast (Bruggeman-Belgium)	5	5	5	5	5	5	5
Sodium chloride	2	2	2	2	2	2	2
Dextrose	2	2	2	2	2	2	2
Ascorbicacid(g/100kg flour)	4	4	4	4	4	4	4
Bel'ase B210 (Beldem - Belgium) (units(1)/ 100 kg flour)	0	630	1050	0	0	0	0
Purified xylanase from <i>Pseudoalteromonas haloplanktis</i> TAH3a (units(1)/100kg flour)	0	0	0	25	50	0	0
Recombinant xylanase from <i>Bacillus halodurans</i> C-125 (units (1)/100kg flour)	0	0	0	0	0	6000	12000

(1) : One unit of xylanase is defined as the amount of enzyme needed to release 1  $\mu$ mole of reducing sugar (expressed as xylose) from birchwood xylan at 30°C and pH 4.5 (Nelson-Somogyi method)

**[0092]** The ingredients were mixed for 4.5 min in a National mixer. 150 g dough pieces were weighted and rested for 20 min at 25°C in plastic boxes. The doughs were reworked and rested for another 20 min. The final proofing time was 50 min at 36°C. The dough pieces were then baked at 225°C for 20 min. The volume of the breads was measured using the commonly used rapeseed displacement method.

**[0093]** The results are presented on the table 6 below:

**Table 6**

Recipe	Sample	Xylanase units/ 100kg flour	Bread volume (ml)
1		0	650
2	Bel'ase B210	630	680

EP 1 549 147 B1

(continued)

Recipe	Sample	Xylanase units/ 100kg flour	Bread volume (ml)
3	Bel'ase B210	1050	705
4	TAH3a	25	690
5	TAH3a	50	760
6	C-125	6000	725
7	C-125	12000	725

[0094] These results show that the positive effect of enzymes of the invention is not restricted to the *Pseudoalteromonas haloplanktis* TAH3a xylanase. Also other enzyme preparations with xylanolytic activity belonging to the glycoside hydrolase family 8 could improve the properties of bread (demonstrated here for the *Bacillus halodurans* C-125 xylanase, other results not shown).

SEQUENCE LISTING

[0095]

<110> PURATOS N.V.

<120> USE OF FAMILY 8 ENZYMES WITH XYLANOLYTIC ACTIVITY IN BAKING

<130> P.PURA.19/WO

<160> 8

<170> PatentIn version 3.2

<210> 1

<211> 28

<212> DNA

<213> Artificial

<220>

<223> sense primer

<400> 1

gggcatatga agaaaacgac agaaggtg 28

<210> 2

<211> 26

<212> DNA

<213> Artificial

<220>

<223> antisense primer

<400> 2

ggctcgagct agtgttctc ttcttg 26

<210> 3

<211> 20

<212> DNA

<213> Artificial

EP 1 549 147 B1

<220>  
<223> sequencing primer

<400> 3  
5 gtgcggactg aaggaatgc 20

<210> 4  
<211> 20  
<212> DNA  
10 <213> Artificial

<220>  
<223> sequencing primer

<400> 4  
15 gtatggtcca tcaacagagg 20

<210> 5  
<211> 21  
20 <212> DNA  
<213> Artificial

<220>  
<223> sequencing primer

25 <400> 5  
gatggcacta aaaactoctg g 21

<210> 6  
30 <211> 1281  
<212> DNA  
<213> Pseudoalteromonas haloplanktis

<220>  
35 <221> misc\_feature  
<223> xylanase gene of Pseudoalteromonas haloplanktis (EMBL accession number AJ427921)

<400> 6  
40

45

50

55

EP 1 549 147 B1

atgaaagtat tttttaaagt aacaacttta ttgttaatac taataagcta tcaatcactt 60  
gctgcattta ataataaacc atcgagtgtg ggcgcctaca gttcagggac ataccgtaac 120  
5 ctcgcacaag aaatgggtaa acaaatata cagcaaaagg tgaatagtac ttttgacaat 180  
atgtttggct ataacaacac acaacaactt tactaccctg acaccgaaaa cgggtgtttat 240  
aaagcacact acataaaagc aattaaccca gacgaaggcg acgatataag aacagaaggg 300  
10 caatcgtggg gaatgaccgc cgctgtcatg cttataaac aagaagaatt tgataaccta 360  
tggcgctttg caaaagcgtg tcaaaaaaat ccagacaatc accctgatgc taaaaaacia 420  
ggcgttttac cgtggaaact aaagcttaat caaacggct ttgtttataa agtggatgag 480  
15 ggccccgctc ccgatggcga agagtacttt gcgtttgac tacttaatgc ctctgctcgt 540  
tgggggaatt cgggtgagtt taactactac aacgatgcca ttaccatggt aaacacaatt 600  
aaaaataagc tgatgaaaa ccaataatc cgcttttcac cttacattga taacctaaca 660  
20 gacccttctt accatatacc tgcgttttac gactactttg caataacgt aactaaccaa 720  
gcagacaaaa attactggcg acaagtagcc acaaaaagta gaaccttact taaaaacat 780  
tttacaagaa taagtggtag cccgcattgg aacttaccta cttttttatc gcgcttagat 840  
25 ggagccctg ttattggcta ctttttaac ggccaagcaa acccaggtca atggtatgaa 900  
tttgatgcat ggcgcgtaat tatgaatgtg ggttttagacg cgatttaat ggggtgctcaa 960  
gcgtggcata aaagtgcagt taataagca ctgggctttt taagttatgc aaaaacaaac 1020  
30 aacagtaaaa actgttacga gcaagtgtat tcgtacggtg gagcgcaaaa cagaggctgt 1080  
gcaggcgaag gtcaaaaagc cgcgaatgca gtagcgttac ttgcttcaac aaatgctggg 1140  
caagcaaatg agttttttaa cgaattttgg tctttatcgc aaccaacggg tgactaccgt 1200  
tactataatg gttcgttata tatgttagct atgctgcatg tatcgggcaa ttttaagttt 1260  
35 tataacaaca cgtttaatta a 1281

40 <210> 7  
<211> 426  
<212> PRT  
<213> Pseudoalteromonas haloplanktis  
45 <220>  
<221> misc\_feature  
<223> xylanase of Pseudoalteromonas haloplanktis (EMBL accession number AJ427921)  
50 <400> 7  
55

EP 1 549 147 B1

1 Met Lys Val Phe Phe Lys Ile Thr Thr Leu Leu Leu Ile Leu Ile Ser  
 5 Tyr Gln Ser Leu Ala Ala Phe Asn Asn Asn Pro Ser Ser Val Gly Ala  
 10 Tyr Ser Ser Gly Thr Tyr Arg Asn Leu Ala Gln Glu Met Gly Lys Thr  
 15 Asn Ile Gln Gln Lys Val Asn Ser Thr Phe Asp Asn Met Phe Gly Tyr  
 20 Asn Asn Thr Gln Gln Leu Tyr Tyr Pro Tyr Thr Glu Asn Gly Val Tyr  
 25 Lys Ala His Tyr Ile Lys Ala Ile Asn Pro Asp Glu Gly Asp Asp Ile  
 30 Arg Thr Glu Gly Gln Ser Trp Gly Met Thr Ala Ala Val Met Leu Asn  
 35 Lys Gln Glu Glu Phe Asp Asn Leu Trp Arg Phe Ala Lys Ala Tyr Gln  
 40 Lys Asn Pro Asp Asn His Pro Asp Ala Lys Lys Gln Gly Val Tyr Ala  
 45 Trp Lys Leu Lys Leu Asn Gln Asn Gly Phe Val Tyr Lys Val Asp Glu  
 50 Gly Pro Ala Pro Asp Gly Glu Glu Tyr Phe Ala Phe Ala Leu Leu Asn  
 55 Ala Ser Ala Arg Trp Gly Asn Ser Gly Glu Phe Asn Tyr Tyr Asn Asp  
 Ala Ile Thr Met Leu Asn Thr Ile Lys Asn Lys Leu Met Glu Asn Gln  
 Ile Ile Arg Phe Ser Pro Tyr Ile Asp Asn Leu Thr Asp Pro Ser Tyr  
 His Ile Pro Ala Phe Tyr Asp Tyr Phe Ala Asn Asn Val Thr Asn Gln  
 Ala Asp Lys Asn Tyr Trp Arg Gln Val Ala Thr Lys Ser Arg Thr Leu

EP 1 549 147 B1

Leu Lys Asn His Phe Thr Lys Val Ser Gly Ser Pro His Trp Asn Leu  
 260 265 270

5 Pro Thr Phe Leu Ser Arg Leu Asp Gly Ser Pro Val Ile Gly Tyr Ile  
 275 280 285

10 Phe Asn Gly Gln Ala Asn Pro Gly Gln Trp Tyr Glu Phe Asp Ala Trp  
 290 295 300

Arg Val Ile Met Asn Val Gly Leu Asp Ala His Leu Met Gly Ala Gln  
 305 310 315 320

15 Ala Trp His Lys Ser Ala Val Asn Lys Ala Leu Gly Phe Leu Ser Tyr  
 325 330 335

20 Ala Lys Thr Asn Asn Ser Lys Asn Cys Tyr Glu Gln Val Tyr Ser Tyr  
 340 345 350

Gly Gly Ala Gln Asn Arg Gly Cys Ala Gly Glu Gly Gln Lys Ala Ala  
 355 360 365

25 Asn Ala Val Ala Leu Leu Ala Ser Thr Asn Ala Gly Gln Ala Asn Glu  
 370 375 380

30 Phe Phe Asn Glu Phe Trp Ser Leu Ser Gln Pro Thr Gly Asp Tyr Arg  
 385 390 395 400

Tyr Tyr Asn Gly Ser Leu Tyr Met Leu Ala Met Leu His Val Ser Gly  
 405 410 415

35 Asn Phe Lys Phe Tyr Asn Asn Thr Phe Asn  
 420 425

40 <210> 8  
 <211> 388  
 <212> PRT  
 <213> Bacillus halodurans

45 <220>  
 <221> misc\_feature  
 <223> xylanase Y from Bacillus halodurans strain C-125 (GenBank/GenPeptTM accession code BAB05824)

50 <400> 8

55

EP 1 549 147 B1

Met Lys Lys Thr Thr Glu Gly Ala Phe Tyr Thr Arg Glu Tyr Arg Asn  
1 5 10 15

5 Leu Phe Lys Glu Phe Gly Tyr Ser Glu Ala Glu Ile Gln Glu Arg Val  
20 25 30

10 Lys Asp Thr Trp Glu Gln Leu Phe Gly Asp Asn Pro Glu Thr Lys Ile

15

20

25

30

35

40

45

50

55



EP 1 549 147 B1

		35				40				45						
5	Tyr	Tyr	Glu	Val	Gly	Asp	Asp	Leu	Gly	Tyr	Leu	Leu	Asp	Thr	Gly	Asn
		50				55					60					
	Leu	Asp	Val	Arg	Thr	Glu	Gly	Met	Ser	Tyr	Gly	Met	Met	Met	Ala	Val
	65					70					75					80
10	Gln	Met	Asp	Arg	Lys	Asp	Ile	Phe	Asp	Arg	Ile	Trp	Asn	Trp	Thr	Met
					85					90					95	
	Lys	Asn	Met	Tyr	Met	Thr	Glu	Gly	Val	His	Ala	Gly	Tyr	Phe	Ala	Trp
15				100					105					110		
	Ser	Cys	Gln	Pro	Asp	Gly	Thr	Lys	Asn	Ser	Trp	Gly	Pro	Ala	Pro	Asp
			115					120					125			
20	Gly	Glu	Glu	Tyr	Phe	Ala	Leu	Ala	Leu	Phe	Phe	Ala	Ser	His	Arg	Trp
		130					135					140				
	Gly	Asp	Gly	Asp	Glu	Gln	Pro	Phe	Asn	Tyr	Ser	Glu	Gln	Ala	Arg	Lys
25		145				150					155					160
	Leu	Leu	His	Thr	Cys	Val	His	Asn	Gly	Glu	Gly	Gly	Pro	Gly	His	Pro
					165					170					175	
30	Met	Trp	Asn	Arg	Asp	Asn	Lys	Leu	Ile	Lys	Phe	Ile	Pro	Glu	Val	Glu
				180					185					190		
	Phe	Ser	Asp	Pro	Ser	Tyr	His	Leu	Pro	His	Phe	Tyr	Glu	Leu	Phe	Ser
35			195					200					205			
	Leu	Trp	Ala	Asn	Glu	Glu	Asp	Arg	Val	Phe	Trp	Lys	Glu	Ala	Ala	Glu
		210					215					220				
40	Ala	Ser	Arg	Glu	Tyr	Leu	Lys	Ile	Ala	Cys	His	Pro	Glu	Thr	Gly	Leu
		225				230					235					240
	Ala	Pro	Glu	Tyr	Ala	Tyr	Tyr	Asp	Gly	Thr	Pro	Asn	Asp	Glu	Lys	Gly
45					245					250					255	
	Tyr	Gly	His	Phe	Phe	Ser	Asp	Ser	Tyr	Arg	Val	Ala	Ala	Asn	Ile	Gly
				260					265					270		
50	Leu	Asp	Ala	Glu	Trp	Phe	Gly	Gly	Ser	Glu	Trp	Ser	Ala	Glu	Glu	Ile
			275					280					285			
	Asn	Lys	Ile	Gln	Ala	Phe	Phe	Ala	Asp	Lys	Glu	Pro	Glu	Asp	Tyr	Arg
		290					295					300				
55	Arg	Tyr	Lys	Ile	Asp	Gly	Glu	Pro	Phe	Glu	Glu	Lys	Ser	Leu	His	Pro

	305		310		315		320
5	Val Gly Leu Ile	Ala Thr Asn Ala Met Gly Ser Leu Ala Ser Val Asp	325	330	335		
	Gly Pro Tyr	Ala Lys Ala Asn Val Asp Leu Phe Trp Asn Thr Pro Val	340	345	350		
10	Arg Thr Gly	Asn Arg Arg Tyr Tyr Asp Asn Cys Leu Tyr Leu Phe Ala	355	360	365		
15	Met Leu Ala Leu Ser Gly	Asn Phe Lys Ile Trp Phe Pro Glu Gly Gln	370	375	380		
20	Glu Glu Glu His		385				

**Claims**

- 25 1. Method for the preparation of a baked product, said method comprising the step of adding to the dough of said baked product a bread improving composition comprising at least one enzyme with xylanolytic activity selected from the group consisting of glycoside hydrolases Family 8.
- 30 2. The method of claim 1, wherein the enzyme hydrolyses with inversion of configuration.
3. The method of claim 1 or 2, wherein the enzyme is a xylanase obtained from the strain *Pseudoalteromonas haloplanktis*.
- 35 4. The method of claim 3, wherein the strain is *Pseudoalteromonas haloplanktis* TAH3a and the xylanase obtained preferably has the amino acid sequence of SEQ ID NO:7.
5. The method of claim 1 or 2, wherein the enzyme is a xylanase obtained from the strain *Bacillus halodurans*.
- 40 6. The method of claim 5, wherein the strain is *Bacillus halodurans* C-125 and the xylanase obtained preferably has the amino acid sequence of SEQ ID NO:8.
7. The method of anyone of the preceding claims, wherein the bread improving composition is added during the mixing of the dough.
- 45 8. The method of anyone of the preceding claims, wherein the bread improving composition further comprises another bread-improving agent which is selected from the list consisting of other enzymes, emulsifiers, oxidants, milk powder, fats, sugars, amino acids, salts, proteins (gluten, cellulose binding sites) or a mixture thereof.
- 50 9. The method of claim 8, wherein the other enzyme is selected from the list consisting of alpha-amylases, beta-amylases, maltogenic amylases, other xylanases, proteases, glucose oxidase, oxido-reductases, glucanases, cellulases, transglutaminases, isomerases, lipases, phospholipases, pectinases or a mixture thereof.
10. The method of claim 9, wherein the alpha-amylase is an alpha-amylase obtained from *Aspergillus oryzae*.
- 55 11. The method of anyone of the preceding claims, wherein the enzyme with xylanolytic activity is present as a cell extract, a cell-free extract or as a purified protein.
12. The method of anyone of the preceding claims, wherein the enzyme with xylanolytic activity is mixed with other

## EP 1 549 147 B1

ingredients in the form of a dry powder, of a granulate, or in the form of a liquid.

13. The method of claim 12, wherein the enzyme is mixed with stabilizers.

5 14. The method of claim 13, wherein the stabilizers are selected from the group consisting of polyols, sugars, organic acids and sugar alcohols.

10 15. Method for increasing the loaf volume of a baked product, comprising the step of adding during the mixing of the dough of said baked product, a sufficient amount of an enzyme with xylanolytic activity selected from the group consisting of glycoside hydrolase family 8 xylanases.

15 16. Method for increasing the loaf volume of a baked product or for increasing the width of cut on the surface of a baked product, comprising the step of adding during the mixing of the dough of said baked product, a sufficient amount an enzyme with xylanolytic activity selected from the group consisting of glycoside hydrolase family 8 xylanases, of a family 8 glycoside hydrolase that hydrolyzes with inversion of configuration and/or of a combination thereof.

20 17. Bread improver composition for increasing the loaf volume of a baked product or for increasing the width of cut on the surface of a baked product, **characterised in that** it comprises a bread-improving agent and at least one enzyme with xylanolytic activity selected from the group consisting of glycoside hydrolases Family 8.

25 18. The bread improver composition of claim 17, wherein the enzyme hydrolyses with inversion of configuration.

30 19. The bread improver composition of claim 17 or 18, wherein the enzyme is a xylanase obtained from the strain *Pseudoalteromonas haloplanktis*.

35 20. The bread improver composition of claim 19, wherein the strain is *Pseudoalteromonas haloplanktis* TAH3a and the xylanase obtained preferably has the amino acid sequence of SEQ ID NO:7.

40 21. The bread improver composition of claim 17 or 18, wherein the enzyme is a xylanase obtained from the strain *Bacillus halodurans*.

45 22. The bread improver composition of claim 21, wherein the strain is *Bacillus halodurans* C-125 and the xylanase obtained preferably has the amino acid sequence of SEQ ID NO:8.

### Patentansprüche

50 1. Verfahren zur Herstellung einer Backware, wobei das Verfahren den Schritt des Zugebens einer Brotverbesserungszusammensetzung, welche mindestens ein Enzym mit xylanolytischer Aktivität ausgewählt aus der Gruppe bestehend aus Familie 8 der Glykosidhydrolasen umfasst, zu dem Teig der Backware umfasst.

55 2. Verfahren nach Anspruch 1, wobei das Enzym unter Inversion der Konfiguration hydrolysiert.

60 3. Verfahren nach Anspruch 1 oder 2, wobei das Enzym eine Xylanase erhalten aus dem Stamm *Pseudoalteromonas haloplanktis* ist.

65 4. Verfahren nach Anspruch 3, wobei der Stamm *Pseudoalteromonas haloplanktis* TAH3a ist und die erhaltene Xylanase vorzugsweise die Aminosäuresequenz von SEQ ID NO. 7 aufweist.

70 5. Verfahren nach Anspruch 1 oder 2, wobei das Enzym eine Xylanase erhalten aus dem Stamm *Bacillus halodurans* ist.

75 6. Verfahren nach Anspruch 5, wobei der Stamm *Bacillus halodurans* C-125 ist und die erhaltene Xylanase vorzugsweise die Aminosäuresequenz von SEQ ID NO. 8 aufweist.

80 7. Verfahren nach einem der vorhergehenden Ansprüche, wobei die Brotverbesserungszusammensetzung während des Vermischens des Teigs zugegeben wird.

85 8. Verfahren nach einem der vorhergehenden Ansprüche, wobei die Brotverbesserungszusammensetzung ferner ein

## EP 1 549 147 B1

weiteres brotverbesserndes Mittel umfasst, welches aus der Liste bestehend aus anderen Enzymen, Emulgatoren, Oxidationsmitteln, Milchpulver, Fetten, Zuckern, Aminosäuren, Salzen, Proteinen (Gluten, Zellulose-Bindungsstellen) oder einer Mischung davon ausgewählt ist.

- 5 9. Verfahren nach Anspruch 8, wobei das andere Enzym ausgewählt ist aus der Liste bestehend aus Alpha-Amylasen, Beta-Amylasen, maltogenen Amylasen, anderen Xylanasen, Proteasen, Glucose-Oxidase, Oxido-Reduktasen, Glucanasen, Cellulasen, Transglutaminasen, Isomerasen, Lipasen, Phospholipasen, Pectinasen oder einer Mischung davon.
- 10 10. Verfahren nach Anspruch 9, wobei die Alpha-Amylase eine Alpha-Amylase erhalten aus *Aspergillus oryzae* ist.
11. Verfahren nach einem der vorhergehenden Ansprüche, wobei das Enzym mit xylanolytischer Aktivität als ein Zell-extrakt, ein zellfreies Extrakt oder als ein aufgereinigtes Protein vorliegt.
- 15 12. Verfahren nach einem der vorhergehenden Ansprüche, wobei das Enzym mit xylanolytischer Aktivität mit anderen Inhaltsstoffen in Form eines Trockenpulvers, eines Granulats oder in Form einer Flüssigkeit vermischt ist.
13. Verfahren nach Anspruch 12, wobei das Enzym mit Stabilisatoren vermischt ist.
- 20 14. Verfahren nach Anspruch 13, wobei die Stabilisatoren ausgewählt sind aus der Gruppe bestehend aus Polyolen, Zuckern, organischen Säuren und Zuckeralkoholen.
- 15 15. Verfahren zur Erhöhung des Laibvolumens einer Backware, umfassend den Schritt des Zugebens einer ausreichenden Menge eines Enzyms mit xylanolytischer Aktivität ausgewählt aus der Gruppe bestehend aus Xylanasen der Familie 8 der Glykosidhydrolasen während des Vermischens des Teigs der Backware.
- 25 16. Verfahren zur Erhöhung des Laibvolumens einer Backware oder zur Erhöhung der Schnittbreite auf der Oberfläche einer Backware, umfassend den Schritt des Zugebens einer ausreichenden Menge eines Enzyms mit xylanolytischer Aktivität ausgewählt aus der Gruppe bestehend aus Xylanasen der Familie 8 der Glykosidhydrolasen, aus einer Glykosidhydrolase der Familie 8, welche unter Inversion der Konfiguration hydrolysiert und/oder einer Kombination davon, während des Vermischens des Teigs der Backware.
- 30 17. Brotverbesserungszusammensetzung zur Erhöhung des Laibvolumens einer Backware oder zur Erhöhung der Schnittbreite auf der Oberfläche einer Backware, **dadurch gekennzeichnet, dass** sie ein brotverbesserndes Mittel und mindestens ein Enzym mit xylanolytischer Aktivität ausgewählt aus der Gruppe bestehend aus Glykosidhydrolasen der Familie 8 umfasst.
- 35 18. Brotverbesserungszusammensetzung nach Anspruch 17, wobei das Enzym unter Inversion der Konfiguration hydrolysiert.
- 40 19. Brotverbesserungszusammensetzung nach Anspruch 17 oder 18, wobei das Enzym eine Xylanase erhalten aus dem Stamm *Pseudoalteromonas haloplanktis* ist.
- 45 20. Brotverbesserungszusammensetzung nach Anspruch 19, wobei der Stamm *Pseudoalteromonas haloplanktis* TAH3a ist und die erhaltene Xylanase vorzugsweise die Aminosäuresequenz von SEQ ID NO. 7 aufweist.
21. Brotverbesserungszusammensetzung nach Anspruch 17 oder 18, wobei das Enzym eine Xylanase erhalten aus dem Stamm *Bacillus halodurans* ist.
- 50 22. Brotverbesserungszusammensetzung nach Anspruch 21, wobei der Stamm *Bacillus halodurans* C-125 ist und die erhaltene Xylanase vorzugsweise die Aminosäuresequenz von SEQ ID NO. 8 aufweist.

### Revendications

- 55 1. Procédé pour la préparation d'un produit cuit, ledit procédé comprenant l'étape consistant à ajouter à la pâte dudit produit cuit une composition améliorant le pain comprenant au moins une enzyme ayant une activité xylanolytique sélectionnée dans le groupe constitué de la famille 8 des glycoside hydrolases.

## EP 1 549 147 B1

2. Procédé selon la revendication 1, dans lequel l'enzyme exerce une hydrolyse avec une inversion de configuration.
3. Procédé selon la revendication 1 ou 2, dans lequel l'enzyme est une xylanase obtenue à partir de la souche *Pseudoalteromonas haloplanktis*.
- 5 4. Procédé selon la revendication 3, dans lequel la souche est *Pseudoalteromonas haloplanktis* TAH3a et la xylanase obtenue possède de préférence la séquence d'acides aminés de SEQ ID NO: 7.
- 10 5. Procédé selon la revendication 1 ou 2, dans lequel l'enzyme est une xylanase obtenue à partir de la souche *Bacillus halodurans*.
6. Procédé selon la revendication 5, dans lequel la souche est *Bacillus halodurans* C-125 et la xylanase obtenue possède de préférence la séquence d'acides aminés de SEQ ID NO: 8.
- 15 7. Procédé selon l'une quelconque des revendications précédentes, dans lequel la composition améliorant le pain est ajoutée pendant le pétrissage de la pâte.
8. Procédé selon l'une quelconque des revendications précédentes, dans lequel la composition améliorant le pain comprend en outre un autre agent améliorant le pain qui est sélectionné dans la liste constituée d'autres enzymes, des émulsifiants, des oxydants, de la poudre de lait, des graisses, des sucres, des acides aminés, des sels, des protéines (gluten, sites de liaison à la cellulose) ou d'un mélange de ceux-ci.
- 20 9. Procédé selon la revendication 8, dans lequel l'autre enzyme est sélectionnée dans la liste constituée des alpha-amylases, des bêta-amylases, des amylases maltogènes, d'autres xylanases, des protéases, de la glucose oxydase, des oxydoréductases, des glucanases, des cellulases, des transglutaminases, des isomérases, des lipases, des phospholipases, des pectinases ou d'un mélange de celles-ci.
- 25 10. Procédé selon la revendication 9, dans lequel l'alpha-amylase est une alpha-amylase obtenue à partir de *Aspergillus oryzae*.
- 30 11. Procédé selon l'une quelconque des revendications précédentes, dans lequel l'enzyme ayant une activité xylanolytique est présente en tant qu'extrait cellulaire, un extrait exempt de cellules ou en tant que protéine purifiée.
- 35 12. Procédé selon l'une quelconque des revendications précédentes, dans lequel l'enzyme ayant une activité xylanolytique est mélangée avec d'autres ingrédients sous la forme d'une poudre sèche, d'un granulé, ou sous la forme d'un liquide.
13. Procédé selon la revendication 12, dans lequel l'enzyme est mélangée avec des stabilisants.
- 40 14. Procédé selon la revendication 13, dans lequel les stabilisants sont sélectionnés dans le groupe constitué des polyols, des sucres, des acides organiques et des sucres-alcools.
15. Procédé pour augmenter le volume en pain d'un produit cuit, comprenant l'étape consistant à ajouter, pendant le pétrissage de la pâte dudit produit cuit, une quantité suffisante d'une enzyme ayant une activité xylanolytique sélectionnée dans le groupe constitué des xylanases de la famille 8 des glycoside hydrolases.
- 45 16. Procédé pour augmenter le volume en pain d'un produit cuit ou pour augmenter la largeur de coupe sur la surface d'un produit cuit, comprenant l'étape consistant à ajouter, pendant le pétrissage de la pâte dudit produit cuit, une quantité suffisante d'une enzyme ayant une activité xylanolytique sélectionnée dans le groupe constitué des xylanases de la famille 8 des glycoside hydrolases, d'une glycoside hydrolase de la famille 8 qui exerce une hydrolyse avec une inversion de configuration et/ou une combinaison de celles-ci.
- 50 17. Composition améliorant le pain destinée à augmenter le volume en pain d'un produit cuit ou à augmenter la largeur de coupe sur la surface d'un produit cuit, **caractérisée en ce qu'elle** comprend un agent améliorant le pain et au moins une enzyme ayant une activité xylanolytique sélectionnée dans le groupe constitué de la famille 8 des glycoside hydrolases.
- 55 18. Composition améliorant le pain selon la revendication 17, dans laquelle l'enzyme exerce une hydrolyse avec une

## EP 1 549 147 B1

inversion de configuration.

5 **19.** Composition améliorant le pain selon la revendication 17 ou 18, dans laquelle l'enzyme est une xylanase obtenue à partir de la souche *Pseudoalteromonas haloplanktis*.

**20.** Composition améliorant le pain selon la revendication 19, dans laquelle la souche est *Pseudoalteromonas haloplanktis* TAH3a et la xylanase obtenue possède de préférence la séquence d'acides aminés de SEQ ID NO: 7.

10 **21.** Composition améliorant le pain selon la revendication 17 ou 18, dans laquelle l'enzyme est une xylanase obtenue à partir de la souche *Bacillus halodurans*.

**22.** Composition améliorant le pain selon la revendication 21, dans laquelle la souche est *Bacillus halodurans* C-125 et la xylanase obtenue possède de préférence la séquence d'acides aminés de SEQ ID NO: 8.

15

20

25

30

35

40

45

50

55

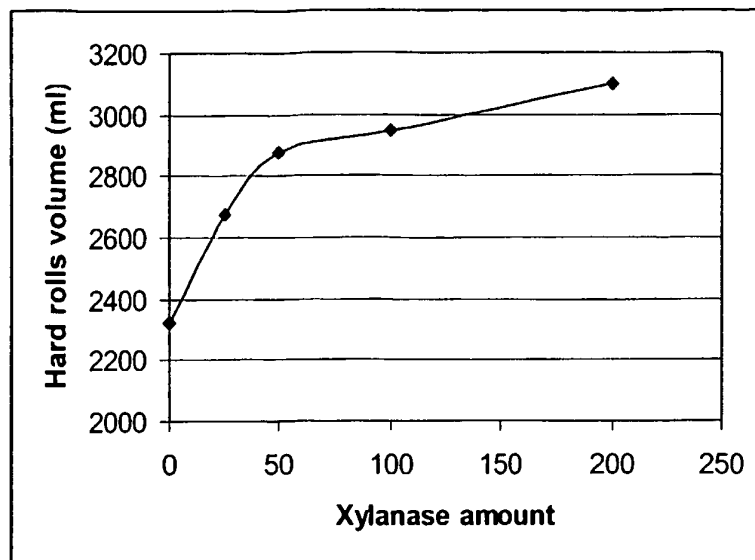


Fig. 1

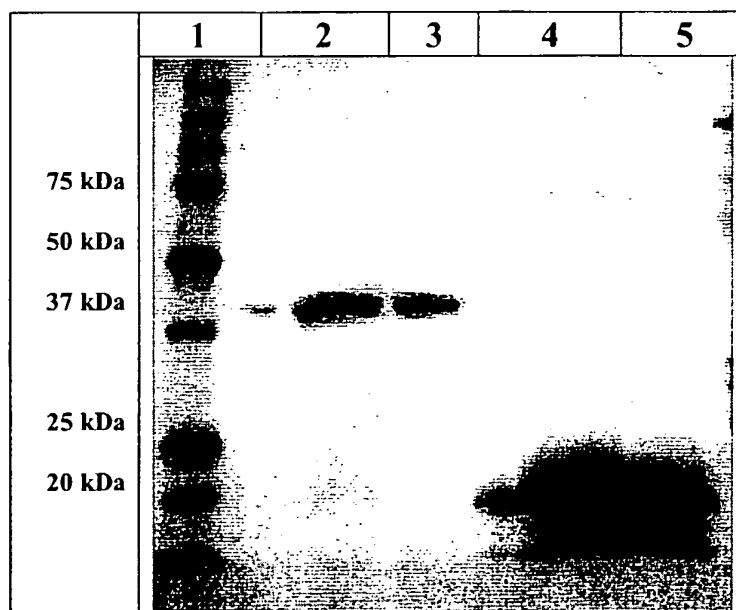


Fig. 2

atgaaagtat tttttaaagt aacaacttta ttgttaatac taataagcta  
tcaatcactt gctgcattta ataataaccc atcgagtgta ggcgcctaca  
gttcagggac ataccgtaac ctgcgacaag aaatgggtaa aacaaatata  
cagcaaaagg tgaatagtac ttttgacaat atgtttggct ataacaacac  
acaacaactt tactaccgct acaccgaaaa cgggtgtttat aaagcacact  
acataaaagc aattaacceca gacgaaggcg acgatataag aacagaaggg  
caatcgtggg gaatgaccgc cgctgtcatg cttataaac aagaagaatt  
tgataaccta tggcgctttg caaaagcgta tcaaaaaaat ccagacaatc  
accctgatgc taaaaaaca ggcgtttacg cgtggaaact aaagcttaat  
caaaacggct ttgtttataa agtggatgag ggccccgctc ccgatggcga  
agagtacttt gcgtttgcac tacttaatgc ctctgctcgt tgggggaatt  
cgggtgagtt taactactac aacgatgcca ttaccatggt aaacacaatt  
aaaaataagc tgatggaaaa ccaataatc cgcttttcac cttacattga  
taacctaca gacccttctt accatatacc tgcgttttac gactactttg  
caaataacgt aactaaccaa gcagacaaaa attactggcg acaagtagcc  
acaaaaagta gaaccttact taaaaacat ttacaaaaag taagtggtag  
cccgcattgg aacttaccta catttttatc gcgcttagat ggcagccctg  
ttattggcta catttttaac ggccaagcaa acccaggtca atgggatgaa  
tttgatgcat ggcgcgtaat tatgaatgtg ggtttagacg cgcatttaat  
gggtgctcaa gcgtggcata aaagtgcagt taataaagca ctgggctttt  
taagttatgc aaaaacaac aacagtaaaa actgttacga gcaagtgtat  
tcgtacggtg gagcgcaaaa cagaggctgt gcaggcgaag gtcaaaaagc  
cgcgaatgca gtacgcttac ttgcttcaac aaatgctggg caagcaaatg  
agttttttta cgaattttg tctttatcgc aaccaacggg tgactaccgt  
tactataatg gttegttata tatgttagct atgctgcatg tatcgggcaa  
ttttaagttt tataacaaca cgtttaatta a (SEQ ID NO: 6)

(EMBL Accession number AJ427921)

**Fig. 3A**

MKVFFKITTLLLLILISYQSLAAFNNPSSVSGAYSSGTYRNLAQEMGKTNIQQKVNSTFD  
NMFGYNNTQQLYYPYTENGVYKAHYI KAINPDEGDDIRTEGQSWGMTAAVMLNKQEEFD  
NLWRFAKAYQKNPDNHPDAKKQGVYAWKLKLNQNGFVYKVDEGPAPDGEYFAFALLNA  
SARWNSGEFNYNDAITMLNTIKNKLMENQIIRFSPYIDNLTDPYHI PAFYDYFANN  
VTNQADKNYWRQVATKSRTLLKNHFTKVSGSPHWNLPTFLSRLDGSPIVIGYIFNGQANP  
GQWYEFDAWRVIMNVGLDAHLMGAQAWHKS AVNKALGFLSYAKTNNKNCYEQVYSYGG  
AQNRGCAGEGQKAANAVALLASTNAGQANEFNEFWLSQPTGDYRYNGSLYMLAMLH  
VSGNFKFYNNTFN (SEQ ID NO: 7)

(EMBL Accession number AJ427921)

**Fig. 3B**



MKKTTEGAFYTREYRNLFKKEFGYSEAEIQERVKDTWEQLFGDNPETKIYYEVDGDDLGYL  
LDTGNLDVRTEGMSYGMMMAVQMDRKDIFDRIWNWTMKNMYMTEGVHAGYFAWSCQPDG  
TKNSWGPAPDGEEYFALALFFASHRWGDGDEQPFNYSEQARKLLHTCVHNGEGGPGHPM  
WNRDNKLIKFIPEVEFSDPSYHLPHFYELFSLWANEDRVFWKEAAEASREYLKIACHP  
ETGLAPEYAYYDGTNPDEKGYGHFFSDSYRVAANIGLDAEWFGGSEWSAEEINKIQAFF  
ADKEPEDYRRYKIDGEPFEEKSLHPVGLIATNAMGSLASVDGPYAKANVDLFWNTPVRT  
GNRRYYDNCLYLFAMLALSGNFKIWFPEGQEEH (SEQ ID NO: 8)

(GenBank/GenPept™ accession code BAB05824)

**Fig. 4**

## REFERENCES CITED IN THE DESCRIPTION

*This list of references cited by the applicant is for the reader's convenience only. It does not form part of the European patent document. Even though great care has been taken in compiling the references, errors or omissions cannot be excluded and the EPO disclaims all liability in this regard.*

## Non-patent literature cited in the description

- **Henrissat B.** *Biochem. J.*, 1991, vol. 280, 309 [0004]
- **Dominguez et al.** *Nat. Struct. Biol.*, 1995, vol. 2, 569 [0004]
- **Törrönen et al.** *EMBO J.*, 1994, vol. 13, 2498 [0004]
- **Biely et al.** *J. Biotechnol.*, 1997, vol. 57, 151 [0004]
- **Jeffries.** *Curr. Opin. Biotechnol.*, 1997, vol. 7, 337 [0004]
- **Miller G.L.** *Anal. Chem.*, 1959, vol. 31, 426 [0010]
- **Collins, T. et al.** A novel Family 8 xylanase: functional and physico-chemical characterisation. *J. Biol. Chem.*, 2002, vol. 277-38, 35133 [0012]
- **Collins, T. et al.** Activity, stability and flexibility in glycosidases adapted to extreme thermal environments. *J. Mol. Biol.*, 2003, vol. 328, 419 [0012]
- **Van Petegem F. et al.** Crystallization and preliminary X-ray analysis of a xylanase from the psychrophile *Pseudoalteromonas haloplanktis*. *Acta Crystallogr D Biol Crystallogr.*, 2002, vol. 58, 1494-6 [0012]
- **Zdobnov ; Apweiler.** *Bioinformatics*, 2001, vol. 17, 847 [0012]
- **Van Petegem et al.** The structure of a cold-adapted family 8 xylanase at 1.3 Å resolution. Structural adaptations to cold and investigation of the active site. *J. Biol. Chem.*, 2003, vol. 278 (9), 7531-9 [0013]
- **Fierobe et al.** *Eur. J. Biochem.*, 1993, vol. 217, 557 [0014]
- **Van Petegem et al.** *J. Biol. Chem.*, 2003, vol. 278 (9), 7531-9 [0014]
- **Collins, T. et al.** A novel family 8 xylanase: functional and physico-chemical characterization. *J. Biol. Chem.*, 2002, vol. 277 (38), 35133 [0014]
- **Yoon, K-H.** Molecular cloning of a *Bacillus* sp. KK-1 xylanase gene and characterization of the gene product. *Biochem. Mol. Biol. International*, 1998, vol. 45 (2), 337 [0014]
- **Collins T. et al.** A novel Family 8 xylanase: functional and physico-chemical characterisation. *J. Biol. Chem.*, 2002, vol. 277 (38), 35133 [0041]